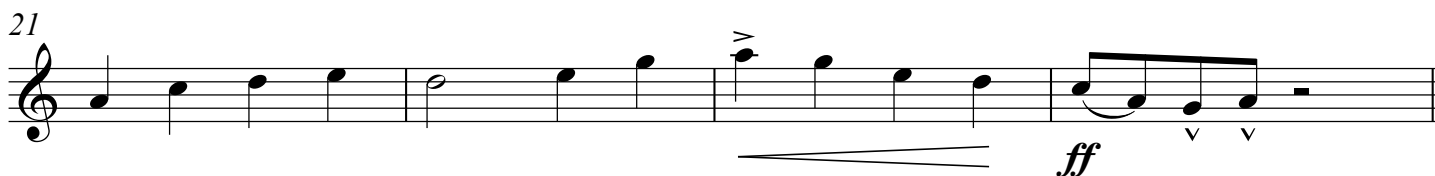
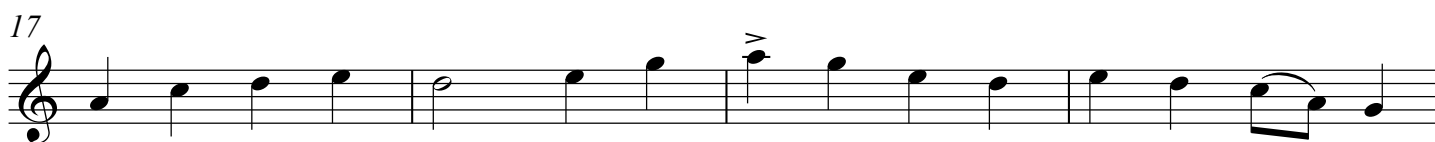
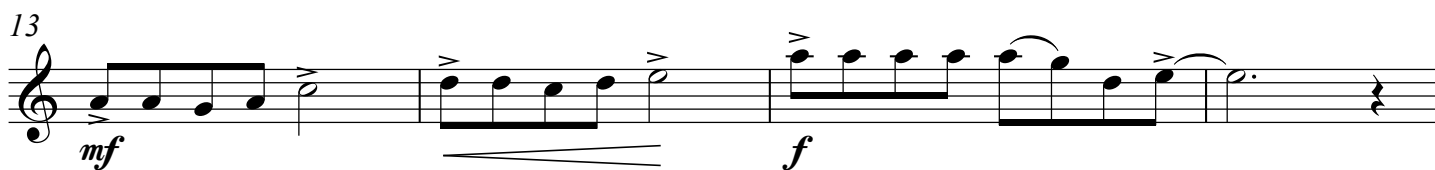
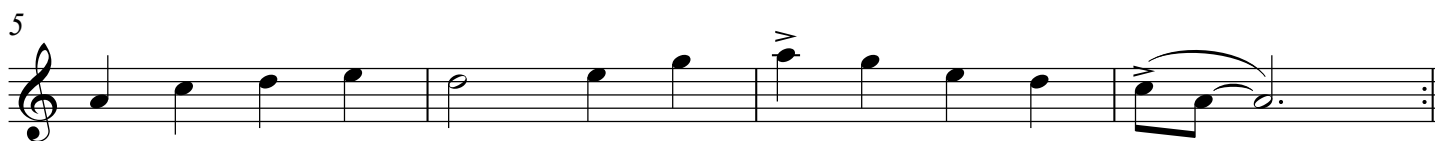
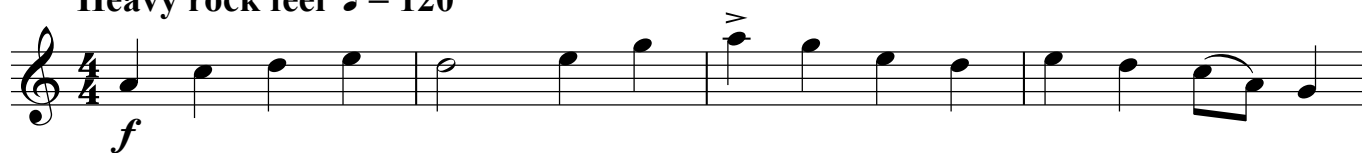


1. Rock Formation

James Rae
(*1957)

Heavy rock feel ♩ = 120



11. Destiny II

James Rae

Andante ♩ = 80

p espress. *mp*

p *cresc.*

mp *p* *cresc.*

mf *mp* *p* *rit.*

12. Rock Summit

James Rae

Solid rock tempo ♩ = 120

f

f

f

20. Dynamite

James Rae

Solid rock feel ♩ = 120

The musical score for 'Dynamite' is written in 4/4 time with a key signature of one sharp (F#). The tempo is marked as 'Solid rock feel ♩ = 120'. The score consists of ten staves of music, with measure numbers 5, 9, 13, 17, 21, 25, 29, 33, and 37 indicated at the beginning of their respective staves. The dynamics are marked as follows: *mf* (mezzo-forte) at the start, *f* (forte) at measures 9 and 25, and *ff* (fortissimo) at measures 13, 33, and 37. The music features a driving, rhythmic pattern with many eighth and sixteenth notes, often beamed together. There are several accents and slurs throughout the piece. The final measure (47) ends with a double bar line.

27. Hot Noodles

James Rae

Bright bebop tempo ♩ = 200 (swing quavers)

Musical score for "Hot Noodles" by James Rae. The score is in 4/4 time with a key signature of three sharps (F#, C#, G#). It consists of eight staves of music. The first staff starts with a 7-measure rest followed by a melodic line starting on G4, marked *mf*. The second staff starts at measure 5, marked *cresc.* and *f*. The third staff starts at measure 9, marked *mf*. The fourth staff starts at measure 13, marked *cresc.*, *f*, and *mf*. The fifth staff starts at measure 17. The sixth staff starts at measure 21, marked *cresc.* and *f*. The seventh staff starts at measure 25, marked *mf*. The eighth staff starts at measure 29, marked *cresc.* and *f*. The piece ends with a double bar line at the end of the eighth staff.

33. Mambo à la Funk

James Rae

In a driving 2 $\text{♩} = 142$

f

5

mf

9

f

13

to Coda \oplus

ff

17

Wail!

ff

21

f

25

ff

30

ff