

Through Shadowed Vales

1st Solo B \flat Cornet or
Tenor Saxophone

Valse de Concert
DUO

HOLMES & SMITH

Allegro Moderato

Musical notation for the first section of the piece. It consists of three staves. The first staff is in treble clef with a key signature of one flat and a common time signature. It begins with a 7-measure rest, followed by a melodic line with various ornaments and a 'Cad.' marking. The second staff is in bass clef, starting with a 1-measure rest, followed by a melodic line with the instruction 'p con amoroso'. The third staff continues the melodic line, marked 'a tempo' and 'rit.', and ends with a 3-measure rest and the instruction 'Tempo di Valse'.

WALTZ

mf deciso

Musical notation for the second section of the piece, labeled 'WALTZ'. It consists of seven staves. The first staff is in treble clef with a key signature of one flat and a 3/4 time signature, marked 'mf deciso'. The second staff continues the melodic line. The third staff is in bass clef, marked 'p' and '4', with the instruction 'lower notes' below it. The fourth staff continues the melodic line, marked 'f allegramente'. The fifth staff continues the melodic line, marked 'p' and '7', with the instruction 'D.C. al' below it. The sixth staff is in treble clef, marked '3' and 'p', with the instruction 'TRIO' and 'p con carita' below it. The seventh staff continues the melodic line, marked '4' and 'f', with first and second endings indicated by '1' and '2'.



f articolato



D.S. al

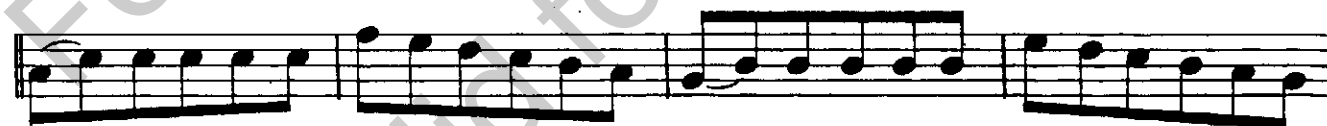
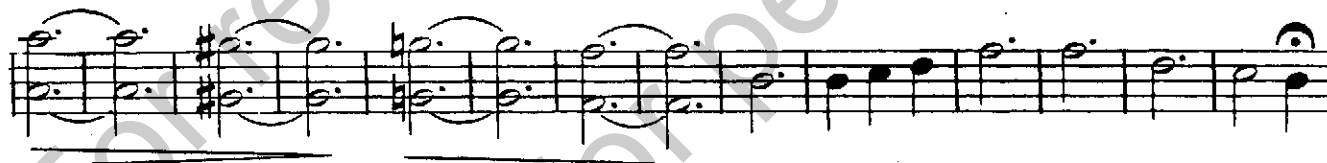
TUTTI

16

deciso



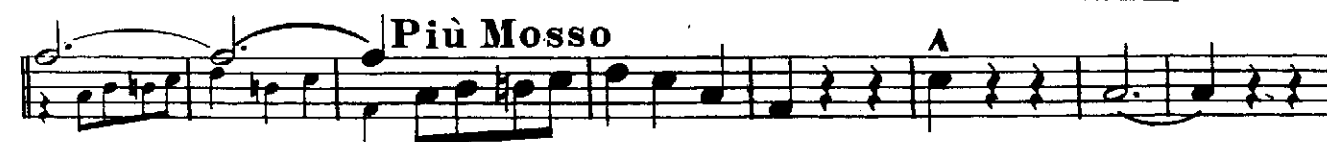
mf



f articolato



accel. poco à poco



Through Shadowed Vales

*2d Solo B \flat Cornet or Valse de Concert
Soprano Saxophone DUO

HOLMES & SMITH

Allegro Moderato

7
Andante *ff* Cad.

1
p con amoroso

Tempo di Valse
3

WALTZ
mf deciso

p

f

p

TRIO
4 8
p con carita
D.C. al

p *f*
1 2

*Use this part for Cornet when played with Trombone

f articolato

D. S. al

TUTTI
16

FINALE

p deciso

p

f articolato

accel. poco a poco

Più Mosso

A