

Take The Time

Composed & Arranged by
LES HOOPER

Conductor

EASY + GENTLE, BUT WITH A DEFINITE PULSE (♩ = 72)



A217SB

1st ALTO

2nd ALTO

1st TENOR

2nd TENOR

BARITONE

TRUMPET 1

TRUMPET 2

TRUMPET 3

TRUMPET 4

TROMBONE 1

TROMBONE 2

TROMBONE 3

TROMBONE 4

GUITAR

PIANO

BASS

DRUMS

OPTION: SOLO 1st, OR JUST 2 TRUMPETS FOR LIGHTER SOUND.

more muffled than risky C2 (Ab)

Dbb

C2 (Ab)

Dbb

C2 (Ab)

F#1

CLOSED HI-HAT

Fill

mp

2

3

4

5

6

7

13

1st ALTO

2nd ALTO

1st TENOR

2nd TENOR

BARITONE

TRUMPET 1

TRUMPET 2

TRUMPET 3

TRUMPET 4

TROMBONE 1

TROMBONE 2

TROMBONE 3

TROMBONE 4

GUITAR

Bb7(b9) Em9 Ebm9 Ab7(sus) Ab9(10) Db9(sus) Db9 G7(b9) Gbm7 F#7

PIANO

BASS

DRUMS

1st ALTO
2nd ALTO
1st TENOR
2nd TENOR
BARITONE

TRUMPET 1
TRUMPET 2
TRUMPET 3
TRUMPET 4

TROMBONE 1
TROMBONE 2
TROMBONE 3
TROMBONE 4

GUITAR

PIANO

BASS

DRUMS

1st ALTO

2nd ALTO

1st TENOR

2nd TENOR

BARITONE

TRUMPET 1

TRUMPET 2

TRUMPET 3

TRUMPET 4

TROMBONE 1

TROMBONE 2

TROMBONE 3

TROMBONE 4

GUITAR

PIANO

BASS

DRUMS

Fm^9 $Bb7(b9)$ Em^9 Ebm^9 $Ab^9(sus)$ $A^9(b9)$ $D^9(sus)$ D^9 $G7(b9)$ G^bma^9

TO CODA

1st ALTO

2nd ALTO

1st TENOR

2nd TENOR

BARITONE

TRUMPET 1

TRUMPET 2

TRUMPET 3

TRUMPET 4

TROMBONE 1

TROMBONE 2

TROMBONE 3

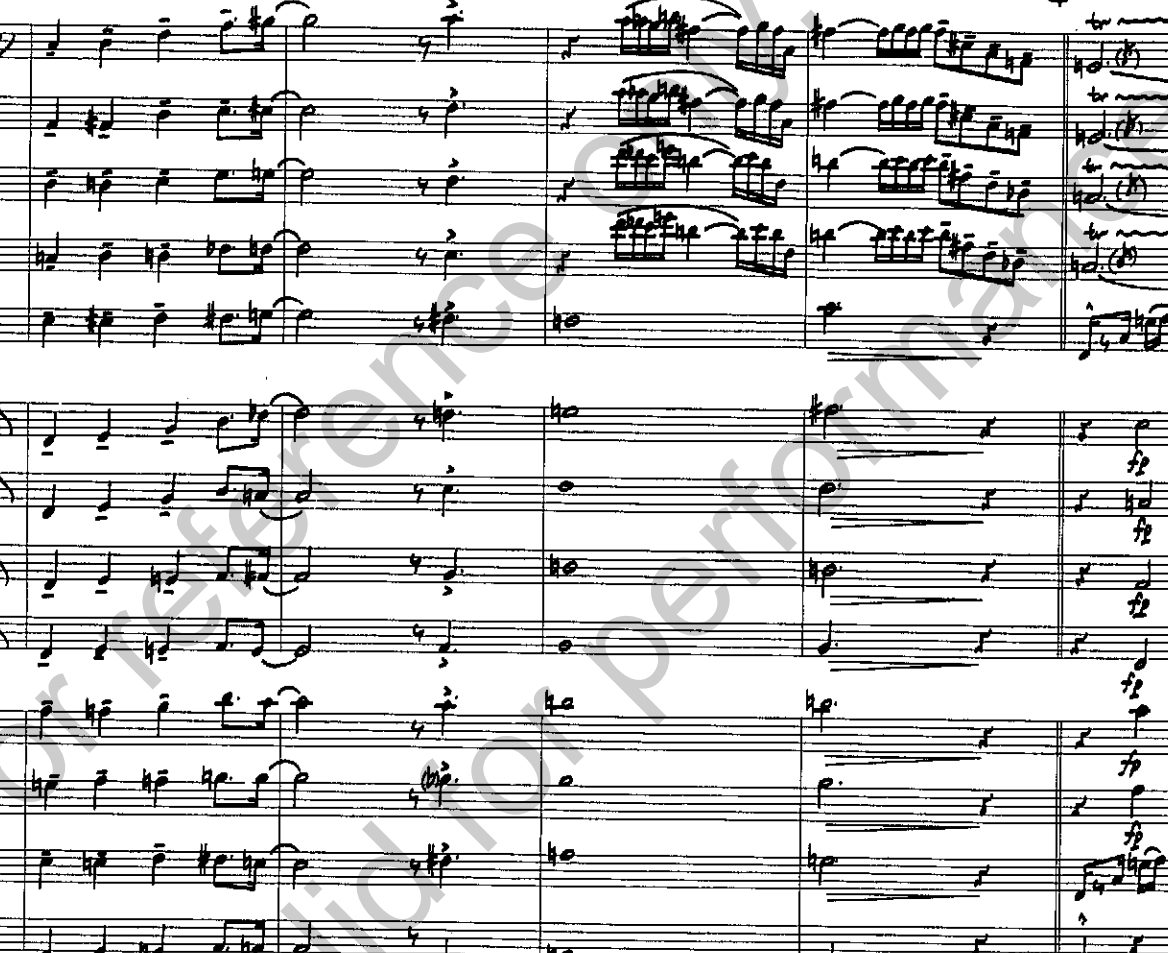
TROMBONE 4

GUITAR

PIANO

BASS

DRUMS



39

1st ALTO

2nd ALTO

1st TENOR

2nd TENOR

BARITONE

TRUMPET 1

TRUMPET 2

TRUMPET 3

TRUMPET 4

TROMBONE 1

TROMBONE 2

TROMBONE 3

TROMBONE 4

GIUITAR

PIANO

BASS

DRUMS

Solo Ebma?

D7(b9)

Gm?

C7(b9)

(D Dim. SCALE)

Fm9

Bb9

D7(b9) Fm9 Ebma? Dm9

Dbma?

C7(b9)

Fm9

Bb7(b9)

1st ALTO

2nd ALTO

1st TENOR

2nd TENOR

BARITONE

TRUMPET 1

TRUMPET 2

TRUMPET 3

TRUMPET 4

TROMBONE 1

TROMBONE 2

TROMBONE 3

TROMBONE 4

GUITAR

PIANO

BASS

DRUMS

Chord symbols for Guitar and Piano:

- 43: Fm7
- 44: Bb7, Eb9(sus)
- 45: Eb9, A7
- 46: Abma7
- 47: G7(b9)
- 48: Cm9
- 49: F7
- 50: Ebm7, Ab9(sus), Ab9(is), Db9(sus), Db9, G7(is), Gbm9, F+7(b9), Bbm9, Eb9, Eb+7

53

1st ALTO

2nd ALTO

1st TENOR

2nd TENOR

BARITONE

TRUMPET 1

TRUMPET 2

TRUMPET 3

TRUMPET 4

TROMBONE 1

TROMBONE 2

TROMBONE 3

TROMBONE 4

GUITAR

PIANO

BASS

DRUMS

2b9 (sus) 2b7 E7(b9)

Eb m7 (SOLO) D7(b9) Gm7 C7(b9) Fm7 Fm7 bb7

A11 (sus) Ab9 (13) D7(b9) Dbm7 C7(b9) Fm9 Eb7 (M) Ebm7 A11 (sus) Ab9 (13)

1st ALTO

2nd ALTO

1st TENOR

2nd TENOR

BARITONE

TRUMPET 1

TRUMPET 2

TRUMPET 3

TRUMPET 4

TROMBONE 1

TROMBONE 2

TROMBONE 3

TROMBONE 4

GUITAR

PIANO

BASS

DRUMS

59 60 61 62 63 64 65 66

Chord progression for Trumpet 4 and Guitar:

- 59: Eb9(sus), Eb9
- 60: A7(b9), Abma7
- 61: Db9
- 62: Gm7, Abm7, Am7, Bm7, Bm7
- 63: Am7
- 64: D9(sus)
- 65: D9(sus)
- 66: C9(sus)

71 THIS SECTION MAY BE EXTENDED. KEEPING RHYTHM SECTION AS IS AND BAND PLAYS PERCUSSION INSTRUMENTS

1st ALTO

2nd ALTO

1st TENOR

2nd TENOR

BARITONE

TRUMPET 1

TRUMPET 2

TRUMPET 3

TRUMPET 4

TROMBONE 1

TROMBONE 2

TROMBONE 3

TROMBONE 4

GUITAR

PIANO

BASS

DRUMS

1st ALTO

2nd ALTO

1st TENOR

2nd TENOR

BARITONE

TRUMPET 1

TRUMPET 2

TRUMPET 3

TRUMPET 4

TROMBONE 1

TROMBONE 2

TROMBONE 3

TROMBONE 4

GUITAR

PIANO

BASS

DRUMS

⊕ CODA

1st ALTO

2nd ALTO

1st TENOR

2nd TENOR

BARITONE

TRUMPET 1

TRUMPET 2

TRUMPET 3

TRUMPET 4

TROMBONE 1

TROMBONE 2

TROMBONE 3

TROMBONE 4

GUITAR

PIANO

BASS

DRUMS

Measures: 83, 84, 85, 86, 87, 88, 89

Chord symbols: Fm⁹, Dm⁹, Fm⁹, Ebm⁹, Dbm⁹, D⁹(b9), Ebm⁹(b5)