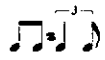


Conductor

032-3290-00

SWING  
♩ = 120-128



# BLUE BRASS

Composed & Arranged by  
DOMINIC SPERA

1st ALTO

2nd ALTO

1st TENOR

2nd TENOR

BARITONE

TRUMPET 1 UNIS.

TRUMPET 2 UNIS.

TRUMPET 3 UNIS.

TRUMPET 4 UNIS.

TROMBONE 1

TROMBONE 2

TROMBONE 3

TROMBONE 4

GUITAR

PIANO

BASS

DRUMS

1st ALTO

2nd ALTO

1st TENOR

2nd TENOR

BARITONE

TRUMPET 1

TRUMPET 2

TRUMPET 3

TRUMPET 4

TROMBONE 1

TROMBONE 2

TROMBONE 3

TROMBONE 4

GUITAR

PIANO

BASS

DRUMS

15

UNIS.

UNIS.

UNIS.

UNIS.

8

9

10

11

12

13

14

15

SING 4

SONES

SING 4

1st ALTO

2nd ALTO

1st TENOR

2nd TENOR

BARITONE

TRUMPET 1

TRUMPET 2

TRUMPET 3

TRUMPET 4

TROMBONE 1

TROMBONE 2

TROMBONE 3

TROMBONE 4

GIITAR

PIANO

BASS

DRUMS

16 17 18 19 20 21 22 23





1st ALTO

2nd ALTO

1st TENOR

2nd TENOR

BARITONE

TRUMPET 1

TRUMPET 2

TRUMPET 3

TRUMPET 4

TROMBONE 1

TROMBONE 2

TROMBONE 3

TROMBONE 4

GUITAR

PIANO

BASS

DRUMS

40 41 42 43 44 45 46 47

(49)

1st ALTO

2nd ALTO

1st TENOR

2nd TENOR

BARITONE

TRUMPET 1

TRUMPET 2

TRUMPET 3

TRUMPET 4

TROMBONE 1

TROMBONE 2

TROMBONE 3

TROMBONE 4

GUITAR

PIANO

BASS

DRUMS

48 49 50 51 52 53 54 55

1st ALTO

2nd ALTO

1st TENOR

2nd TENOR

BARITONE

TRUMPET 1

TRUMPET 2

TRUMPET 3

TRUMPET 4

TROMBONE 1

TROMBONE 2

TROMBONE 3

TROMBONE 4

GUITAR

PIANO

BASS

DRUMS

Chord progression: A7sus, Dm7, D7b9, Cm9, E7, C7, Am7, Dm7, G7, UNIS. m6

Chord progression: G7sus, Cm7, C7b9, Bbm9, E7, Bb7, Gm7, Cm7, F7, UNIS. m6

Chord progression: G7sus, Cm7, C7b9, Cm9, F7, Bb9, Gm9, Cm9, Fm9, Bb9, Am7, D7b9, m6, Gm7, Gm7, Cm7

66 67 68 69 70 71 72



1st ALTO

2nd ALTO

1st TENOR

2nd TENOR

BARITONE

TRUMPET 1

TRUMPET 2

TRUMPET 3

TRUMPET 4

TROMBONE 1

TROMBONE 2

TROMBONE 3

TROMBONE 4

GUITAR

PIANO

BASS

DRUMS

64 65 66 67 68 69 70 71

SOLO FILL

75 PIANO, GUITAR DE BASS SOLO

1st ALTO

2nd ALTO

1st TENOR

2nd TENOR

BARITONE

TRUMPET 1

TRUMPET 2

TRUMPET 3

TRUMPET 4

TROMBONE 1

TROMBONE 2

TROMBONE 3

TROMBONE 4

GUITAR

PIANO

BASS

DRUMS

85

1st ALTO

2nd ALTO

1st TENOR

2nd TENOR

BARITONE

TRUMPET 1

TRUMPET 2

TRUMPET 3

TRUMPET 4

TROMBONE 1

TROMBONE 2

TROMBONE 3

TROMBONE 4

GUITAR

PIANO

BASS

DRUMS

85                      84                      85                      86                      87                      88                      89                      90

1st ALTO

2nd ALTO

1st TENOR

2nd TENOR

BARITONE

TRUMPET 1

TRUMPET 2

TRUMPET 3

TRUMPET 4

TROMBONE 1

TROMBONE 2

TROMBONE 3

TROMBONE 4

GUITAR

PIANO

BASS

DRUMS

91 92 93 94 95 96 97 98

CHORDS: Bb, A7(b9), A7(b9), G7(b9), Cm7, Cm7, Bb, Bb7, Eb7, Eb7

DRUMS: SWING HAD

1st ALTO

2nd ALTO

1st TENOR

2nd TENOR

BARITONE

TRUMPET 1

TRUMPET 2

TRUMPET 3

TRUMPET 4

TROMBONE 1

TROMBONE 2

TROMBONE 3

TROMBONE 4

GUITAR

PIANO

BASS

DRUMS

99

100

101

102

103

104

105

106

To CODA ↗

1st ALTO

2nd ALTO

1st TENOR

2nd TENOR

BARITONE

TRUMPET 1

TRUMPET 2

TRUMPET 3

TRUMPET 4

TROMBONE 1

TROMBONE 2

TROMBONE 3

TROMBONE 4

GUITAR

PIANO

BASS

DRUMS

107

108

109

110

H.H. ONLY

111

112

113

114

115

1st ALTO

2nd ALTO

1st TENOR

2nd TENOR

BARITONE

TRUMPET 1

TRUMPET 2

TRUMPET 3

TRUMPET 4

TROMBONE 1

TROMBONE 2

TROMBONE 3

TROMBONE 4

GUITAR

PIANO

BASS

DRUMS

116 117 118 119 120 121 122 123 124

◆ CODA

1st ALTO

2nd ALTO

1st TENOR

2nd TENOR

BARITONE

TRUMPET 1

TRUMPET 2

TRUMPET 3

TRUMPET 4

TROMBONE 1

TROMBONE 2

TROMBONE 3

TROMBONE 4

GUITAR

PIANO

BASS

DRUMS