

FULL CONDUCTOR SCORE
Score Cat. #012-4203-01

LUISA DI MONTFORT

Finale

for solo clarinet with concert band accompaniment

Michael Bergson
Arranged by
Andrew Glover

The Barnhouse
**SPOTLIGHT
SERIES**
for Concert Band



C.L. BARNHOUSE COMPANY®
Music Publishers • Oskaloosa, IA. 52577
www.barnhouse.com

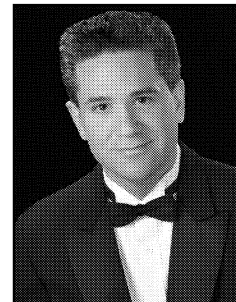
LUISA DI MONTFORT

INSTRUMENTATION

Full Conductor Score	1
Solo Bb Clarinet	2
Flute	10
Oboe	2
1st Bb Clarinet	3
2nd Bb Clarinet	3
3rd Bb Clarinet	3
Bb Bass Clarinet	2
Bassoon	2
Eb Alto Saxophone	6
Bb Tenor Saxophone	2
Eb Baritone Saxophone	1
1st Bb Trumpet	4
2nd Bb Trumpet	4
1st F Horn	2
2nd F Horn	2
1st Trombone	3
2nd Trombone	3
Euphonium (Baritone) BC	2
Euphonium (Baritone) TC	2
Tuba	4
Timpani	1
Bells	2
Snare Drum	2
Bass Drum	1

About the Arranger

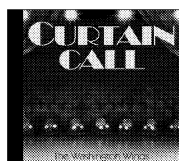
St. Louis native Andrew Glover joined the staff of the C. L. Barnhouse Company in October 1998, and serves as staff composer, arranger, editor, and Executive Vice President. Previously, Glover taught instrumental music in the St. Louis area, most recently as Director of Bands at Rosary High School. He received a Bachelor of Music Education degree from Central Methodist University and did graduate work at Southeast Missouri State University.



As a composer and arranger, Glover has over 200 works to his credit. He began writing music for band while in high school, and his music has been performed, recorded and broadcast by bands worldwide. He has appeared as guest conductor, clinician and speaker in over 35 states, and for many years also performed as a euphonium soloist. For four years he was a member of the Detroit Concert Band, conducted by Dr. Leonard B. Smith, and participated in numerous recording sessions with the DCB.

An enthusiast of classic concert band music and history, Glover is not only involved in new music production at Barnhouse, but also oversees the company's 125-year archive of publications, which serves as the main source for Barnhouse Archive Editions. He is a member of ASCAP; Association of Concert Bands, where he serves on the advisory council; and is conductor of the Windjammers, Unlimited Education Band.

CD Recording Available



WFR378
CURTAIN CALL
 The Washington Winds
 Edward Petersen - Conductor

Contents: Zeus: King Of The Gods (Romeyn); Barnum and Bailey's Favorite March (King/arr. Glover); Crush (R. W. Smith); At Sunrise (Romeyn); El Arco De Los Cabos (Huckeby); Faith (Conaway); Curtain Call (Wasson); The Road To Damascus (Huckeby); Pagliacci (Leoncavallo/arr. Glover); The Great Land Run (Anderson); Basses On A Rampage March (Huffine/arr. Glover); As Spring Arrives (Wada); Luisa di Montfort Finale (Bergson/arr. Glover); The Hermitage (C. Williams); Ask Not (Swearingen)

The Barnhouse SPOTLIGHT SERIES For Concert Band

A series of publications featuring instrumental solo or small ensembles with concert band accompaniment. Designed to showcase more advanced soloists, the band accompaniments are carefully arranged to require a limited amount of rehearsal time. Each selection is "audience friendly" as well as "performer friendly."

Conductor
012-4203-00

for clarinet virtuoso Lynn Fryer
LUISA DI MONTFORT
for solo clarinet with concert band accompaniment

Michal Bergson
arranged by Andrew Glover

Vivace (♩ = 132) Allegro brillante (♩ = 126)

Flute
Oboe
1st B \flat Clarinet
2nd B \flat Clarinet
3rd B \flat Clarinet
Bass Clarinet
Bassoon
Alto Sax
Tenor Sax
Baritone Sax
Solo B \flat Clarinet
1st B \flat Trumpet
2nd B \flat Trumpet
1st F Horn
2nd F Horn
1st Trombone
2nd Trombone
Euphonium (Baritone)
Tuba
Timpani
Bells
Snare Drum
Bass Drum

1 2 3 4 5 6 7 8 9 10

13

Flute

Oboe

1st Clar.

2nd Clar.

3rd Clar.

B. Clar.

Bssn.

A. Sax.

T. Sax.

B. Sax.

13

Solo B. Cl.

1st Tpt.

2nd Tpt.

1st Horn

2nd Horn

1st Tbn.

2nd Tbn.

Euph.

Tuba

Timp.

Bells

S. Dr.

B. Dr.

11 12 14 15 16 17 18 19 20

21

Flute

Oboe

1st Clar.

2nd Clar.

3rd Clar.

B. Clar.

Bssn.

A. Sax.

T. Sax.

B. Sax.

21

Solo B. Cl.

1st Tpt.

2nd Tpt.

1st Horn

2nd Horn

1st Tbn.

2nd Tbn.

Euph.

Tuba

Timp.

Bells

S. Dr.

B. Dr.

22

23

24

25

26

27

28

29

Flute

Oboe

1st Clar.

2nd Clar.

3rd Clar.

B. Clar.

Bssn.

A. Sax.

T. Sax.

B. Sax.

29

Solo B. Cl.

1st Tpt.

2nd Tpt.

1st Horn

2nd Horn

1st Tbn.

2nd Tbn.

Euph.

Tuba

Timp.

Bells

S. Dr.

B. Dr.

30 31 32 33 34 35 36

37

Flute *p*

Oboe *p*

1st Clar.

2nd Clar.

3rd Clar. *p*

B. Clar.

Bssn.

A. Sax. *1st*

T. Sax.

B. Sax.

37

Solo B. Cl.

1st Tpt.

2nd Tpt.

1st Horn

2nd Horn

1st Tbn.

2nd Tbn.

Euph.

Tuba

Timp. *p*

Bells

S. Dr.

B. Dr.

38

39

40

41

42

43

44

45 53

Flute

Oboe

1st Clar.

2nd Clar.

3rd Clar.

B. Clar.

Bssn.

A. Sax.

T. Sax.

B. Sax.

45 53

Solo B. Cl.

1st Tpt.

2nd Tpt.

1st Horn

2nd Horn

1st Tbn.

2nd Tbn.

Euph.

Tuba

Timp.

Bells

S. Dr.

B. Dr.

46 47 48 49 50 51 52 54 55 56

p

p

p

div.

p

mf

mf

p

p

p

Flute

Oboe

1st Clar.

2nd Clar.

3rd Clar.

B. Clar.

Bssn.

A. Sax.

T. Sax.

B. Sax.

Solo B. Cl.

1st Tpt.

2nd Tpt.

1st Horn

2nd Horn

1st Tbn.

2nd Tbn.

Euph.

Tuba

Timp.

Bells

S. Dr.

B. Dr.

57 58 59 60 61 62 63 64 65 66

67 75

Flute *f* *p*

Oboe *f* *p*

1st Clar. *f* *p*

2nd Clar. *f* *p*

3rd Clar. *f* *p*

B. Clar. *f* *p*

Bssn. *f* *p*

A. Sax. *f* *p*

T. Sax. *f* *p*

B. Sax. *f* *p*

67 75

Solo B. Cl.

1st Tpt. *f* *p*

2nd Tpt. *f* *p*

1st Horn *f* *p*

2nd Horn *f* *p*

1st Tbn. *f*

2nd Tbn. *f*

Euph. *f* *p*

Tuba *f* *p*

Timp. *f*

Bells *f*

S.Dr. *f*

B. Dr. *f*

68 69 70 71 72 73 74 76

Flute

Oboe

1st Clar.

2nd Clar.

3rd Clar.

B. Clar.

Bssn.

A. Sax.

T. Sax.

B. Sax.

Solo B. Cl.

1st Tpt.

2nd Tpt.

1st Horn

2nd Horn

1st Tbn.

2nd Tbn.

Euph.

Tuba

Timp.

Bells

S. Dr.

B. Dr.

77 78 79 80 81 82 83 84

85 93

Flute

Oboe

1st Clar.

2nd Clar.

3rd Clar.

B. Clar.

Bssn.

A. Sax.

T. Sax.

B. Sax.

85 93

Solo B. Cl.

1st Tpt.

2nd Tpt.

1st Horn

2nd Horn

1st Tbn.

2nd Tbn.

Euph.

Tuba

Timp.

Bells

S. Dr.

B. Dr.

86 87 88 89 90 91 92 94

poco rit.

101

Flute

Oboe

1st Clar.

2nd Clar.

3rd Clar.

B. Clar.

Bssn.

A. Sax.

T. Sax.

B. Sax.

Solo B♭ Cl.

1st Tpt.

2nd Tpt.

1st Horn

2nd Horn

1st Tbn.

2nd Tbn.

Euph.

Tuba

Timp.

Bells

S. Dr.

B. Dr.

95 96 97 98 99 100 102 103 104

Flute

Oboe

1st Clar.

2nd Clar.

3rd Clar.

B. Clar.

Bssn.

A. Sax.

T. Sax.

B. Sax.

105 106 107 108 110 111 112 113 114

Solo B♭ Cl.

1st Tpt.

2nd Tpt.

1st Horn

2nd Horn

1st Tbn.

2nd Tbn.

Euph.

Tuba

Timp.

Bells

S.Dr.

B. Dr.

105 106 107 108 110 111 112 113 114

117

125

Flute

Oboe

1st Clar.

2nd Clar.

3rd Clar.

B. Clar.

Bssn.

A. Sax.

T. Sax.

B. Sax.

117

125

Solo B♭ Cl.

1st Tpt.

2nd Tpt.

1st Horn

2nd Horn

1st Tbn.

2nd Tbn.

Euph.

Tuba

Timp.

Bells

S. Dr.

B. Dr.

115 116 118 119 120 121 122 123 124 126

Flute

Oboe

1st Clar.

2nd Clar.

3rd Clar.

B. Clar.

Bssn.

A. Sax.

T. Sax.

B. Sax.

Solo B. Cl.

1st Tpt.

2nd Tpt.

1st Horn

2nd Horn

1st Tbn.

2nd Tbn.

Euph.

Tuba

Timp.

Bells

S.Dr.

B. Dr.

127 128 129 130 131 132 133 134 135 136 137 138

139

147

Flute

Oboe

1st Clar.

2nd Clar.

3rd Clar.

B. Clar.

Bssn.

A. Sax.

T. Sax.

B. Sax.

139

147

Solo B. Cl.

1st Tpt.

2nd Tpt.

1st Horn

2nd Horn

1st Tbn.

2nd Tbn.

Euph.

Tuba

Timp.

Bells

S. Dr.

B. Dr.

140

141

142

143

144

145

146

148

Flute

Oboe

1st Clar.

2nd Clar.

3rd Clar.

B. Clar.

Bssn.

A. Sax.

T. Sax.

B. Sax.

Solo B. Cl.

1st Tpt.

2nd Tpt.

1st Horn

2nd Horn

1st Tbn.

2nd Tbn.

Euph.

Tuba

Timp.

Bells

S. Dr.

B. Dr.

Flute

Oboe

1st Clar.

2nd Clar.

3rd Clar.

B. Clar.

Bssn.

A. Sax.

T. Sax.

B. Sax.

Solo B. Cl.

1st Tpt.

2nd Tpt.

1st Horn

2nd Horn

1st Tbn.

2nd Tbn.

Euph.

Tuba

Timp.

Bells

S. Dr.

B. Dr.

Flute

Oboe

1st Clar.

2nd Clar.

3rd Clar.

B. Clar.

Bssn.

A. Sax.

T. Sax.

B. Sax.

Solo B. Cl.

1st Tpt.

2nd Tpt.

1st Horn

2nd Horn

1st Tbn.

2nd Tbn.

Euph.

Tuba

Timp.

Bells

S. Dr.

B. Dr.