

DECLARATIONS

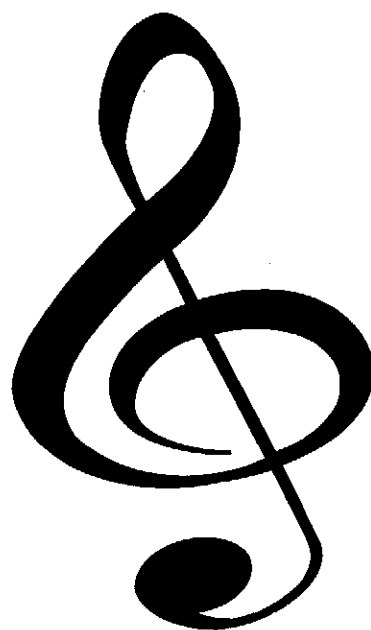
Elliot Del Borgo

Price Complete Set: \$65.00 Extra Score \$6.00

Catalog Number: 012-2060-00
Score Catalog Number: 012-2060-01

Grade: 3

Barnhouse
Music Publications



C.L. BARNHOUSE COMPANY®
Music Publishers Since 1886
www.barnhouse.com

ELLIOT DEL BORG

Born in Port Chester, New York, Elliot Del Borgo holds a B.S. degree from the State University of New York, an Ed.M. degree from Temple University, and an M.M. degree from the Philadelphia Conservatory where he studied theory and composition with Vincent Persichetti and trumpet with Gilbert Johnson. In 1973 he was granted the doctoral equivalency by the State University of New York.

Mr. Del Borgo has taught instrumental music in the Philadelphia Public Schools and is currently Professor of Music at the Crane School of Music where he has held teaching and administrative positions since 1966. An award-winning member of ASCAP, he is a frequent consultant, clinician, lecturer, and adjudicator and is a widely known conductor of bands and orchestras.

In addition to his music for the 1980 Olympics, Mr. Del Borgo has published numerous compositions for a variety of media. His music reflects the aesthetics of twentieth century musical ideals through its eclectic nature and vigorous harmonic and rhythmic style.



INSTRUMENTATION

Full Conductor Score	1
Piccolo	1
1st & 2nd C Flute	5
1st Bb Clarinet	4
2nd Bb Clarinet	4
3rd Bb Clarinet	4
Eb Alto Clarinet	2
Bb Bass Clarinet	2
1st & 2nd Oboes	2
Bassoon	2
1st & 2nd Eb Alto Saxophone	3
Bb Tenor Saxophone	1
Eb Baritone Saxophone	1
1st Bb Cornet	3
2nd Bb Cornet	3
3rd Bb Cornet	3
1st & 2nd F Horn	2
3rd & 4th F Horn	2
1st Trombone	2
2nd Trombone	1
3rd Trombone	1
Baritone T.C.	1
Baritone B.C.	2
Tuba	5
1st Percussion	2
2nd Percussion	2
3rd Percussion	4
4th Percussion	1

REHEARSAL SUGGESTIONS

Be sure to space and separate all marcato sections so the articulation is clear and precise. All ♩ should be played as a ♩ figure. The section that begins at measure 49 must have a flowing quality of forward momentum — do not let the tempo drag. For the middle section of the work, a warm and expressive style with the judicious use of rubato where appropriate is required. The fugal section at Tempo I should employ a light, bouncy type of articulation in the manner of the Baroque era. Strive for a clear, well-balanced linear texture. Play the rest of the piece in a bold and energetic manner.

Elliot Del Borgo

PROGRAM NOTE

An energetic overture in three main parts, DECLARATIONS makes use of bold thematic material in the colorful setting of a symphonic band. The warm and expressive middle portion is reflective in nature and provides the work with the vital element of contrast.

Full Conductor Score

012-2060-00

DECLARATIONS

Elliot A. Del Borgo
(ASCAP)

Perf. Time 6:40

Quickly (♩ = 132)

Piccolo

C Flutes 1 2

Oboes 1 2

B♭ Clarinets 1 2 3

E♭ Alto Clarinet

B♭ Bass Clarinet

E♭ Alto Saxophones 1 2

B♭ Tenor Saxophone

E♭ Baritone Saxophone

Bassoon

Quickly (♩ = 132)

B♭ Cornets 1 2 3

F Horns 1 2 4

Trombones 1 2 3

Baritone

Tuba

Percussion
Triangle, Claves, Marimba

Bells, Tom-Toms, Cymbals

Snare Drum, Bass Drum, Vibraphones, Wood Block, Bongos, Crash Cymbals

Timpani, Suspended Cymbal

Picc.

Fls. 1
2

Obs. 1
2

Bb Cls. 1
2

A. Cl.

B. Cl.

A. Sax. 1
2

T. Sax.

B. Sax.

Ban.

Cora. 1
2

Hrn. 1
2
3
4

Trbs. 1
2

Bar.

Tuba

Trgl. 1

Bells 2

Vibes.
C. Cym.

Timp. 4

S.D.

S. Cym.

C. Cym.

mf

2535

Picc.
 Fla. *loco*
 Obs.
 Bb Cl. 1
 Bb Cl. 2
 A. Cl.
 B. Cl.
 A. Sax. 1
 T. Sax.
 B. Sax.
 Bar.
 Horns 1
 Horns 2
 Horns 3
 Horns 4
 Trbn. 1
 Trbn. 2
 Trbn. 3
 Bar.
 Tuba
 Claves 1
 Claves 2
 S.D.
 W.B.
 Timp.

Picc. 8
 Fla. 1 2
 Obs. 1 2
 B♭Cl. 1 2
 A.Cl.
 B.Cl.
 A.Sax. 1 2
 T.Sax.
 B.Sax.
 Bar.
 Trbn. 1 2 3
 Bar.
 Tuba
 Trgl. 1
 T.Tr. 2
 S.D.
 B.D.
 S.Cym. 4

2535

Picc.

Fl. 1

Fl. 2

Obs. 1

Obs. 2

Bb Cl. 1

Bb Cl. 2

A. Cl.

B. Cl.

A. Sax. 1

A. Sax. 2

T. Sax.

B. Sax.

Bsn.

Cor. 1

Cor. 2

Cor. 3

Hrn. 1

Hrn. 2

Hrn. 3

Hrn. 4

Trpt. 1

Trpt. 2

Trpt. 3

Bar.

Tuba

Trgl.

T. Tr. 1

T. Tr. 2

T. Tr. 3

T. Tr. 4

2535

The image shows a page of a musical score, page 10, for a large orchestra. The score is divided into two systems, each containing multiple staves for different instruments. The instruments listed on the left side of the score are:

- Picc.
- Fl. 1
- Fl. 2
- Obs. 1
- Obs. 2
- Bb Cl. 2
- Bb Cl. 3
- A.Cl.
- B.Cl.
- A.Sax. 1
- A.Sax. 2
- T.Sax.
- B.Sax.
- Bsn.
- Cor. 1
- Cor. 2
- Hrn. 1
- Hrn. 2
- Trbn. 1
- Trbn. 2
- Trbn. 3
- Bar.
- Tuba
- T.Ts. 2
- S.D. 3
- Timp. 4

The score includes various musical notations such as dynamics (ff, f, mp), crescendos (cresc.), and articulation marks (accents). A rehearsal mark "43" is indicated in the upper and lower systems. The page number "10" is in the top left corner, and the number "2535" is in the bottom left corner.

Picc.
 Fls. 1
 2
 Obs. 1
 2
 B♭ Cls. 1
 2
 A. Cl.
 B. Cl.
 A. Sax. 1
 2
 T. Sax.
 B. Sax.
 Bar.
 Tuba
 Trbs. 1
 2
 3
 Hns. 1
 2
 3
 4
 Marimba 1
 S. Cym. 2
 Vibes. 3
 Timp. 4

1. *g*
 2. *loco*
p

mp cant e legato
mp cant e legato
mp cant e legato
mp cant e legato

2
 2
 2
 2

2535

63

Flc.

Fl. 1
2

Obo. 1
2

B♭Cl. 1
2

A.Cl.
B.Cl.

A.Sax. 1
2

T.Sax.
B.Sax.

Bsn.

1
2
3
4

Hrn.

1
2
3

Trbn. 1
2
3

Bar.
Tuba

Marimba 1
2

S.Cym.
Vibes.

Ped. Ped. Ped. Ped. Ped. Ped.

2535

Picc.

Fl. 1
2

Obs. 1
2

Bb Cl. 2
3

A. Cl.

B. Cl.

A. Sax. 1
2

T. Sax.

B. Sax.

Bsn.

Cor. 1
2
3

Hrn. 1
2
3
4

Trbn. 1
2
3

Bar.

Tuba

Marimba 1
2

Vib. 3
4

mf

mp

p

a2

73

Picc. 1

Fl. 1

Obs. 1

B♭Cl. 2

A.Cl. 3

B.Cl. 4

A.Sax. 1

T.Sax. 2

B.Sax. 3

Ban. 4

73

Cor. 1

Cor. 2

Cor. 3

Hrn. 1

Hrn. 2

Hrn. 3

Hrn. 4

Trbn. 1

Trbn. 2

Trbn. 3

Bar. 4

Tuba 5

Claves 1

C.Cym. 2

Bongos

B.D.

S.Cym. 4

loco

ff

cresc.

mp

C.Cym.

Bongos

B.D.

S.Cym.

Picc.
 Fla. 1
 2
 Obs. 1
 2
 Bb Cla. 1
 2
 3
 A. Cl.
 B. Cl.
 A. Sax. 1
 2
 T. Sax.
 B. Sax.
 Ban.
 Cors. 1
 2
 3
 Hrs. 1
 2
 3
 4
 Trbn. 1
 2
 3
 Bar.
 Tuba
 T. Ta.
 Bongos
 S. Cym.
 Timp.
 2535

ff marc.
ff marc.
ff marc.
ff
ff marc.
ff marc.
ff marc.
ff marc.
ff
 Solo
ff
 S. Cym.
 Timp. Solo
ff
ff
 B. Cym.
p
 Bongos
f
 B. D.
 Timp.
f
f

233

Picc. *mf*

Fls. 1 *mf*

Fls. 2

Obs. 1

Obs. 2

Bb. Cl. 1 *p stacc.*

Bb. Cl. 2 *p stacc.*

Bb. Cl. 3

A. Cl. *p*

B. Cl. *sim.*

A. Sax. 1 *p stacc.*

A. Sax. 2

T. Sax.

B. Sax.

Bar. *p*

Bar. *sim.*

234

Cor. 1

Cor. 2

Cor. 3

Hrn. 1

Hrn. 2

Hrn. 3

Hrn. 4

Trbn. 1

Trbn. 2

Trbn. 3

Bar. *mp*

Tuba

Marihu. *mp*

Bongos

Temp. 4

2535

93 Gently (♩=66)

Picc. *loco*

Fl. 1 *loco*

Fl. 2

Obs. 1 *mp*

Obs. 2

Bb Cl. 1

Bb Cl. 2

A. Cl.

B. Cl.

A. Sax. 1

A. Sax. 2

T. Sax.

B. Sax.

Bn.

93 Gently (♩=66)

Cor. 1

Cor. 2

Cor. 3

Hrn. 1

Hrn. 2

Hrn. 3

Hrn. 4

Trbn. 1

Trbn. 2

Trbn. 3

Bar.

Tuba

Marimba 1

Marimba 2

Vibes. 3 *Vibes.* *mf*

Vibes. 4

Picc.

Fla. 1
2

Obs. 1
2

Bb Cl. 1
2
3

A. Cl.
B. Cl.

A. Sax. 1
2

T. Sax.
B. Sax.

Ban.

Cor. 1
2

Hrn. 1
2
3
4

Trbn. 1
2
3

Bar.
Tuba

1
2
3
4

The musical score for page 19 features a woodwind section with Piccolo, Flutes (1 and 2), Oboes (1 and 2), B-flat Clarinets (1, 2, and 3), Alto Clarinet, Bass Clarinet, Alto Saxophones (1 and 2), Tenor Saxophone, and Bass Saxophone. The string section includes Bassoon, Cor Anglais (1 and 2), Horns (1, 2, 3, and 4), Trumpets (1, 2, and 3), Baritone, and Tuba. The woodwinds and saxophones play melodic lines with dynamics such as *mp* and *mf*. The strings provide a rhythmic accompaniment.

100

Picc.

Fl.

Obs.

Bl. Cl.

A. Cl.

B. Cl.

A. Sax.

T. Sax.

B. Sax.

Bsn.

100

Cor.

Hrn.

Trbn.

Bar.

Tuba

113

Ficc.

Fl. 1
2

Obs. 1
2

B♭ Cl. 1
2
3

A. Cl.

B. Cl.

A. Sax. 1
2

T. Sax.

B. Sax.

Ban.

113

Cor. 1
2
3

Hrn. 1
2
3
4

Trbn. 1
2
3

Bar.

Tuba

Vibes.
Ped.

Tempo I

Picc.
 Fla. 1. 8
 2. loco
 p
 Obs. 1
 2
 Bb Cls. 1
 2
 3
 A. Cl.
 B. Cl.
 A. Saxa. 1
 2
 T. Sax.
 B. Sax.
 Bm.
 Cor. 1
 2
 3
 Hns. 1
 2
 3
 4
 Trba. 1
 2
 3
 Bar.
 Tuba
 Marimba 1
 2
 Vibes. 3
 Timp. 4
 2535

Tempo I
 p
 pp
 Tempo I
 mf
 mf
 mf
 pp
 pp

131

Picc.

Fls. 1
2

Oboe. 1
2

B♭ Cls. 1
2
3

A. Cl.

B. Cl.

A. Saxs. 1
2

T. Sax.

B. Sax.

Ban.

131

Corn. 1
2
3

Hrs. 1
2
3
4

Trbn. 1
2
3

Bar.

Tuba

1
2
3

Temp. 4

1. *s*
2. *loco*

mf

mf

mf

Picc.

Fl. 1
2

Obs. 1
2

Bb Cl. 1
2
3

A. Cl.

B. Cl.

A. Sax. 1
2

T. Sax.

B. Sax.

Bsn.

Cor. 1
2
3

Hrn. 1
2
3
4

Trb. 1
2
3

Bnr.

Tuba 1
2
3
4

[41]

Picc.

Fl. 1
2

Obs. 1
2

B♭Cl. 1
2
3

A.Cl.
mf

B.Cl.
mf

A.Sax. 1
2
mf

T.Sax.
mf

B.Sax.
mf

Ban.
mf

[41]

Corn. 1
2
3
mf

Hrn. 1
2
3
4
mf

Trbn. 1
2
3
4
mf

Bar.
mf

Tuba
mf

This musical score page features 21 staves for various instruments. The Piccolo staff is at the top, followed by Flutes (1 and 2), Oboes (1 and 2), B♭ Clarinets (1, 2, and 3), Alto Clarinet, Bass Clarinet, Alto Saxophone (1 and 2), Tenor Saxophone, Bass Saxophone, Bassoon, Cor Anglais (1, 2, and 3), Horns (1, 2, 3, and 4), Trumpets (1, 2, and 3), Baritone, and Tuba. The score includes dynamic markings such as *mf* and *1. 8*, and a section marked **152** at the top right. The notation includes various rhythmic values, accidentals, and phrasing slurs.

Picc.

Fl. 1
2

Obo. 1
2

Bb Cl. 1
2

A. Cl.
B. Cl.

A. Sax.
T. Sax.
B. Sax.

Dr.

Cor. 1
2

Hrn. 1
2
3
4

Trbn. 1
2
3

Bar.
Tuba

1. 8
2. loco

f

mf

mfz

f

161

Picc.

Fl. 1

Fl. 2

Obs. 1

Obs. 2

BbCl. 1

BbCl. 2

A.Cl.

B.Cl.

A.Sax.

T.Sax.

B.Sax.

Bsn.

161

Cor. 1

Cor. 2

Cor. 3

Hrn. 1

Hrn. 2

Hrn. 3

Hrn. 4

Trbn. 1

Trbn. 2

Trbn. 3

Bar.

Tuba

C.Cym. 1

S.Cym. 2

S.D. 3

Timp. 4

2535

Picc.
 Fl. 1
 2
 Obs. 1
 2
 BbCl. 1
 2
 A.Cl.
 B.Cl.
 A.Sax. 1
 2
 T.Sax.
 B.Sax.
 Ban.
 Cor. 1
 2
 3
 Hrn. 1
 2
 3
 4
 Trbn. 1
 2
 3
 Bar.
 Tuba
 C.Cym. 1
 S.Cym. 2
 B.D. 8
 Timp. 4

2535

8 - [7]

Picc. 8 -

Flu. 1 8 -

Obs. 1 8 -

2

1

Bb Cl. 2

3

A. Cl.

B. Cl.

A. Sax. 1

2

T. Sax.

B. Sax.

Ban.

1 [7]

2

3

Cor. 2

3

Hrn. 1

2

3

Trbn. 1

2

3

Bar.

Tuba

1

2

T. Tr.

Bongos 1

2

3

4

ff

f

mp

2535

Picc. 8
 Fla. 1 8
 2
 Obs. 1
 2
 Bb Cl. 1
 2
 3
 A. Cl.
 B. Cl.
 A. Sax. 1
 2
 T. Sax.
 B. Sax.
 Bas.
 Cor. 1
 2
 3
 Hrn. 1
 2
 3
 Trbn. 1
 2
 3
 Bar.
 Tuba
 C. Cym. 1
 T. T. 2
 Bongos 3
 S. D. 4

Cym.
 T. T.
 S. D.
 S. Cym.

2535

187

8

Picc.

Fl. 1

2

Obs. 1

2

Bb Cl. 1

2

3

A. Cl.

B. Cl.

A. Sax. 1

2

T. Sax.

B. Sax.

Bsn.

188

1

2

3

4

Cor. 1

2

3

Hrn. 1

2

3

4

Trbn. 1

2

3

Bar.

Tuba

C. Cym.

T. Tr.

Bongos

B.D.

Timp.

2535

Picc. *loco*
 Fla. 1 *loco ff*
 Obs. 1 *ff*
 Obs. 2 *ff*
 Bb Cls. 1 *ff*
 Bb Cls. 2 *ff*
 A. Cl. *ff*
 B. Cl. *ff*
 A. Saxs. 1 *ff*
 T. Sax. *ff*
 B. Sax. *ff*
 Ban. *ff*
 Cors. 1 *ff*
 Cors. 2 *ff*
 Cors. 3 *ff*
 Hns. 1 *ff*
 Hns. 2 *ff*
 Hns. 3 *ff*
 Hns. 4 *ff*
 Trbn. 1 *ff*
 Trbn. 2 *ff*
 Trbn. 3 *ff*
 Bar. *ff*
 Tuba *ff*
 C. Cym. *ff*
 T. Ts. *ff*
 Bongos *ff*
 B. D. *ff*
 Timp. *ff*

2535