

LOST CREEK ADVENTURE

ED HUCKEY

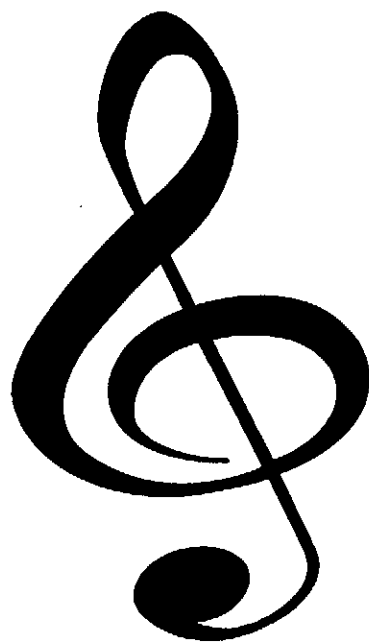
Catalog No. 011-2325-00

Score No. 011-2325-01

Price Complete Set: \$45.00 Score \$3.50

GRADE LEVEL: 2 1/2

Barnhouse
Music Publications



C.L. BARNHOUSE COMPANY®

Music Publishers Since 1886

www.barnhouse.com

LOST CREEK ADVENTURE

Instrumentation

Conductor Score	1
C Flute	10
1st Bb Clarinet	5
2nd Bb Clarinet.....	5
Bb Bass Clarinet.....	1
Oboe.....	1
Bassoon	1
1st Eb Alto Saxophone.....	3
2nd Eb Alto Saxophone/ Eb Alto Clarinet.....	3
Bb Tenor Saxophone / Baritone TC.....	2
Eb Baritone Saxophone	1
1st Bb Trumpet.....	4
2nd Bb Trumpet.....	4
F Horns.....	2
1st Trombone	2
2nd Trombone	2
Baritone B.C.	1
Basses.....	3
Snare Drum / Bass Drum	3
Cymbals / Triangle.....	1
Timpani.....	1

ABOUT THE COMPOSER

Ed Huckleby is the director of bands and chairman of the music department at Northwestern State University in Alva, Oklahoma. Prior to his appointment to this position in 1976, Huckleby taught eight years in Oklahoma public schools establishing a record of excellence in concert, marching and jazz band.

Mr. Huckleby holds his bachelor's degree from East Central State University in Ada, Oklahoma, and a Master of Music Education degree from the University of Oklahoma. Advanced degree work in music and administration has been done at Oklahoma University, North Texas State University and Oklahoma State University.

Huckleby has written music education articles for *The Instrumentalist*, *The American Music Teacher*, and the *Journal of the International Horn Society*. He is a member of Music Educators National Conference, Oklahoma Music Educators Association, Oklahoma Bandmasters Association, C.B.D.N.A., A.S.C.A.P., Phi Mu Alpha Sinfonia, and Phi Beta Mu. Mr. Huckleby is listed in the "International Who's Who in Music" and has been selected as an "Outstanding Young Man in America."

Ed Huckleby is widely recognized as a composer, conductor, adjudicator and clinician. His band music publications have been played by bands across the United States and in Australia.

Broadly (♩ = 72)

CONDUCTOR
011-2325-00

Commissioned by and dedicated to the
Woodward Junior High School Band,
Woodward, Oklahoma, Ray Bell, Director

Lost Creek Adventure

Ed Hucceby
ASCAP

© 1981 Birch Lane Music Press, (ASCAP), P.O. Box 880 Oklahoma, IA 52577
International copyright secured. All rights reserved. Printed in U.S.A.
WARNING: This composition is protected by copyright law.
To copy or reproduce it by any method is an infringement of the copyright law.

Flute
Oboe

Bb Clarinets 1
2

Eb Alto 1
Saxophones 2

Bb Trumpets 1
2

F Horn

Trombones 1
2

Baritone
Basses

Timpani
(F, G, C)

Cymbals
Cr. Cym.

Snare Drum
Bass Drum

7 Allegro con brio (♩ = 144)

Fl.
Oboe

Cla.
1, 2

A. Sx.
1, 2

Tpt.
1, 2

F. Hn.

Tbn.
1, 2

Bar.
Bass

Timp.

Cym.
Sus. Cym.

S.D.
B.D.

allargando

sfz

ff

Fl.
Oboe

Cl.
1, 2

A. Sx.
1, 2

Tpt.
1, 2

F. Hn.

Tbn.
1, 2

Bar.
Bass

Timp.

Cym.

S.D.
B.D.

Fl.
Oboe

Cl.
1, 2

A. Sx.
1, 2

Tpt.
1, 2

F. Hn.

Tbn.
1, 2

Bar.
Bass

Timp.

Cym.

S.D.
B.D.

22

Fl. Oboe

Cl. 1, 2

A. Sx. 1, 2

Tpt. 1, 2

F Hn.

Tbn. 1, 2

Bar. Bass

Timp.

Cym.

S.D. B.D.

+ Tambourine

+ Claves

Fl. Oboe

Cl. 1, 2

A. Sx. 1, 2

Tpt. 1, 2

F Hn.

Tbn. 1, 2

Bar. Bass

Timp.

Cym.

S.D. B.D.

div.

30

Fl.
Oboe

Cl.
1, 2

A. Sx.
1, 2

Tpt.
1, 2

F Hn.

Tbn.
1, 2

Bar.
Bass

Timp.

Cym.

S.D.
B.D.

Closed H.H. w/ Snare stick

B.D. only

38

Fl.
Oboe

Cl.
1, 2

A. Sx.
1, 2

Tpt.
1, 2

F Hn.

Tbn.
1, 2

Bar.
Bass

Timp.

Cym.

S.D.
B.D.

cresc.

f

cresc.

f

cresc.

f

cresc.

f

cresc.

f

cresc.

f

cresc.

f

cresc.

f

Sus. Cym.

Sus. Cym. w/ Snare stick

+ ramb.

+ claves

3856

50 *Andante cantabile*

Fl. Oboe *mf*

Cl. 1, 2 *mp*

A. Sx. 1, 2 *mp*

Tpt. 1, 2

F. Hn.

Tbn. 1, 2

Bar. Bass *Low W.W. (Tuba cued)* *mp*

Timp. *mp*

Cym. *mp*

S.D. B.D.

Fl. Oboe *mf* **58** *+ oboe*

Cl. 1, 2

A. Sx. 1, 2

Tpt. 1, 2

F. Hn.

Tbn. 1, 2

Bar. Bass

Timp. *p* *mp*

Cym. *p* *mp* *Triangle*

S.D. B.D.

Fl. Oboe

Cls. 1, 2

A. Sax. 1, 2

Tpt. 1, 2

F. Hn.

Tbn. 1, 2

Bar. Bass

Timp.

Cym.

S.D. B.D.

+ Tuba

66

Fl. Oboe

Cls. 1, 2

A. Sax. 1, 2

Tpt. 1, 2

F. Hn.

Tbn. 1, 2

Bar. Bass

Timp.

Cym.

S.D. B.D.

(Hn. cues)

#2

Fl. Oboe

Cla. 1, 2

A. Sax. 1, 2

Tpt. 1, 2 *div.*

F. Hn.

Tbn. 1, 2

Bar. Bass

Timp.

Cym.

S.D. B.D.

Fl. Oboe *rit. e dim.*

Cla. 1, 2 *rit. e dim.*

A. Sax. 1, 2 *rit. e dim.*

Tpt. 1, 2 *rit. e dim.*

F. Hn. *rit. e dim.*

Tbn. 1, 2 *rit. e dim.*

Bar. Bass *rit. e dim.*

Timp. *rit. e dim.*

Cym. *rit.*

S.D. B.D. *rit. e dim.*

3856

84 *a tempo*

Fl. Oboe
Cts. 1, 2
A. Sx. 1, 2
Tpt. 1, 2
F. Hn.
Tbn. 1, 2
Bar. Bass
Timp.
Cym.
S.D.
B.D.

mp *mf* *mp* *mp* *p*

*Low W.W.
(Tuba cued)*

91

Fl. Oboe
Cts. 1, 2
A. Sx. 1, 2
Tpt. 1, 2
F. Hn.
Tbn. 1, 2
Bar. Bass
Timp.
Cym.
S.D.
B.D.

mf *rit. e dim.* *p*

mf *rit. e dim.* *p*

mf *rit. e dim.* *p*

mf *rit. e dim.* *p*

mf *rit. e dim.* *p*

mf *rit. e dim.* *p*

mf *rit. e dim.* *p*

mf *rit. e dim.* *p*

mf *rit.* *p*

mf *rit.* *p*

+ tuba

Sus. Cym.

96 Allegro con brio

D.S. al Coda

Fl. Oboe
Cls. 1, 2
A. Sx. 1, 2
Tpt. 1, 2
F. Hn.
Tbn. 1, 2
Bar. Bass
Timp.
Cym.
S.D. B.D.

mf *cresc.* *f*

(B^b to C)

Coda

Fl. Oboe
Cls. 1, 2
A. Sx. 1, 2
Tpt. 1, 2
F. Hn.
Tbn. 1, 2
Bar. Bass
Timp.
Cym.
S.D. B.D.

ff *sfp* *ff*

chk.

3856