

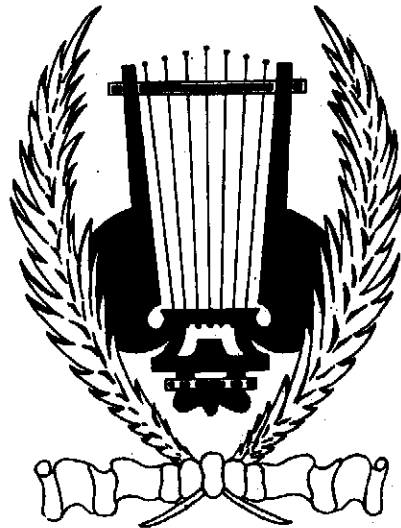
Barnhouse Concert Band

HORN-A-PLENTY

Ed Huckeby

Price Archive Edition Set: \$70.00 – Extra Score \$6.00

Barnhouse Archive Edition



C.L. BARNHOUSE COMPANY®
Oskaloosa, Iowa 52577 U.S.A.
www.barnhouse.com

HORN-A-PLENTY Instrumentation

Conductor Score	1
C Flutes	10
1st Bb Clarinet	5
2nd Bb Clarinet	5
Bb Bass Clarinet	1
Oboe	1
Bassoon	1
1st Eb Alto Saxophone	3
2nd Eb Alto Saxophone / Alto Clarinet	3
Eb Baritone Saxophone	1
1st Bb Trumpet	4
2nd Bb Trumpet	4
Solo F Horn	1
2nd F Horn (Opt.)	1
3rd F Horn (Opt.)	1
1st Trombone	2
2nd Trombone	2
Baritone TC / Tenor Saxophone	2
Baritone BC	1
Tuba	3
Percussion (Sn. Dr., Bass Dr.)	3
Cymbals	1
Timpani	1

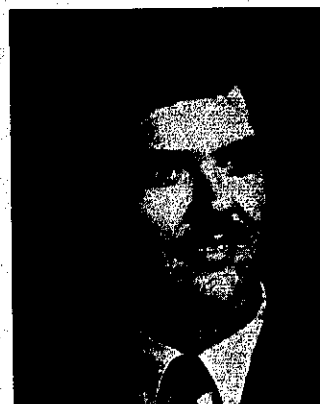
ABOUT THE COMPOSER

Ed Hucceby is the director of bands and chairman of the music department at Northwestern State University in Alva, Oklahoma. Prior to his appointment to this position in 1976, Hucceby taught eight years in Oklahoma public schools establishing a record of excellence in concert, marching and jazz band.

Mr. Hucceby holds his bachelor's degree from East Central State University in Ada, Oklahoma, and a Master of Music Education degree from the University of Oklahoma. Advanced degree work in music and administration has been done at Oklahoma University, North Texas State University and Oklahoma State University.

Hucceby has written music education articles for *The Instrumentalist*, *The American Music Teacher*, and the *Journal of the International Horn Society*. He is a member of Music Educators National Conference, Oklahoma Music Educators Association, Oklahoma Bandmasters Association, C.B.D.N.A., A.S.C.A.P., Phi Mu Alpha Sinfonia, and Phi Beta Mu. Mr. Hucceby is listed in the "International Who's Who in Music" and has been selected as an "Outstanding Young Man in America."

Ed Hucceby is widely recognized as a composer, conductor, adjudicator and clinician. His band music publications have been played by bands across the United States and in Australia.



Ed Hucceby

"To Amanda"
HORN-A-PLENTY

CONDUCTOR SCORE
011-2301-00

Horn Solo, Duet, Trio
or Section Feature with Band

ED HUCKEBY

Allegro (♩ = 132-144) *op. 8va*

Flute Oboe
B♭ Clarinets 1 2
E♭ Alto Saxophones 1 2
B♭ Trumpets 1 2
F Horn Solo or Section
Trombones 1 2
Baritone Basses
Timpani (F, B♭)
Cymbals
Snare Drum
Bass Drum

5 9

Flute Oboe
B♭ Clarinets 1 2
E♭ Alto Saxophones 1 2
B♭ Trumpets 1 2
F Horn Solo or Section
Trombones 1 2
Baritone Basses
Timpani
Cymbals
Snare Drum
Bass Drum

HORN-A-PLENTY - Pg. 4

Flute
Oboe

B^b Clarinets 1
2

E^b Alto
Saxophones 1
2

B^b Trumpets 1
2

F Horn

Trombones 1
2

Baritone
Basses

Timpani

Cymbals

Snare Drum
Bass Drum

This system of the musical score includes parts for Flute/Oboe, B^b Clarinets 1 and 2, E^b Alto Saxophones 1 and 2, B^b Trumpets 1 and 2, F Horn, Trombones 1 and 2, Baritone/Basses, Timpani, Cymbals, and Snare/Bass Drums. The Flute/Oboe part is mostly silent. The B^b Clarinets and E^b Alto Saxophones play a rhythmic accompaniment. The B^b Trumpets and F Horn play a melodic line with accents. The Trombones and Baritone/Basses play a harmonic accompaniment. The Timpani has a single note marked *mp*. The Snare and Bass Drums play a steady rhythmic pattern.

17

Flute
Oboe

B^b Clarinets 1
2

E^b Alto
Saxophones 1
2

B^b Trumpets 1
2

F Horn

Trombones 1
2

Baritone
Basses

Timpani

Cymbals

Snare Drum
Bass Drum

This system continues the musical score. The Flute/Oboe part begins with a melodic line marked *mf* and *cresc.*. The B^b Clarinets and E^b Alto Saxophones also play a melodic line marked *mf* and *cresc.*. The B^b Trumpets and F Horn play a melodic line marked *mf* and *cresc.*. The Trombones and Baritone/Basses play a harmonic accompaniment marked *mf* and *cresc.*. The Timpani has a single note marked *mf*. The Snare and Bass Drums play a steady rhythmic pattern marked *cresc.*.

Flute
Oboe

B^b Clarinets 1
2

E^b Alto
Saxophones 1
2

B^b Trumpets 1
2

F Horn

Trombones 1
2

Baritone
Basses

Timpani

Cymbals

Snare Drum
Bass Drum

Flute
Oboe

B^b Clarinets 1
2

E^b Alto
Saxophones 1
2

B^b Trumpets 1
2

F Horn

Trombones 1
2

Baritone
Basses

Timpani

Cymbals

Snare Drum
Bass Drum

HORN-A-PLENTY - Pg. 6

33

Flute Oboe

B^b Clarinets 1 2

E^b Alto Saxophones 1 2

B^b Trumpets 1 2

F Horn

Trombones 1 2

Baritone Basses

Timpani

Cymbals

Snare Drum Bass Drum

mf

div.

41

Flute Oboe

B^b Clarinets 1 2

E^b Alto Saxophones 1 2

B^b Trumpets 1 2

F Horn

Trombones 1 2

Baritone Basses

Timpani

Cymbals

Snare Drum Bass Drum

f

mf

cresc.

Musical score for Horn-A-Plenty, page 7, measures 48-52. The score includes parts for Flute/Oboe, B♭ Clarinets 1/2, E♭ Alto Saxophones 1/2, B♭ Trumpets 1/2, F Horn, Trombones 1/2, Baritone Basses, Timpani, Cymbals, and Snare/Bass Drums. The music is in 2/4 time with a key signature of one flat. The woodwinds and brass play a rhythmic pattern of eighth notes, while the percussion provides a steady accompaniment.

49

Musical score for Horn-A-Plenty, page 7, measures 53-57. The score includes parts for Flute/Oboe, B♭ Clarinets 1/2, E♭ Alto Saxophones 1/2, B♭ Trumpets 1/2, F Horn, Trombones 1/2, Baritone Basses, Timpani, Cymbals, and Snare/Bass Drums. The music continues with the same rhythmic pattern as the previous page, featuring woodwinds and brass playing eighth notes and percussion.

Flute
Oboe

B^b Clarinets 1
2

E^b Alto 1
Saxophones 2

B^b Trumpets 1
2

F Horn

Trombones 1
2

Baritone
Basses

Timpani

Cymbals

Snare Drum
Bass Drum

f *cresc.* *ff*

f *cresc.* *ff*

f *cresc.* *ff*

f *cresc.* *ff*

f *cresc.* *ff*

f *cresc.* *ff*

f *cresc.* *ff*

f *chk.* *ff*

f *cresc.* *ff*

57

Flute
Oboe

B^b Clarinets 1
2

E^b Alto 1
Saxophones 2

B^b Trumpets 1
2

F Horn

Trombones 1
2

Baritone
Basses

Timpani

Cymbals

Snare Drum
Bass Drum

a2 *mf*

a2 *mf*

a2 *mf*

a2 *mf*

a2 *mf*

mf

mf

mf

mf

mf

mf

mf

65

Flute
Oboe

B \flat Clarinets 1
2

E \flat Alto
Saxophones 1
2

B \flat Trumpets 1
2

F Horn

Trombones 1
2

Baritone
Basses

Timpani

Cymbals

Snare Drum
Bass Drum

Flute
Oboe

B \flat Clarinets 1
2

E \flat Alto
Saxophones 1
2

B \flat Trumpets 1
2

F Horn

Trombones 1
2

Baritone
Basses

Timpani

Cymbals

Snare Drum
Bass Drum

3827

HORN-A-PLENTY - Pg. 10

73

Flute Oboe

B[♭] Clarinets 1 2

E[♭] Alto Saxophones 1 2

B[♭] Trumpets 1 2

F Horn

Trombones 1 2

Baritone Bases

Timpani

Cymbals

Snare Drum
Bass Drum

mf *a2* *div.*

81

Flute Oboe

B[♭] Clarinets 1 2

E[♭] Alto Saxophones 1 2

B[♭] Trumpets 1 2

F Horn

Trombones 1 2

Baritone Bases

Timpani

Cymbals

Snare Drum
Bass Drum

a2 *div.* *a2* *div.*

87

Flute
Oboe

B^b Clarinets 1
2

E^b Alto
Saxophones 1
2

B^b Trumpets 1
2

F Horn

Trombones 1
2

Baritone
Basses

Timpani

Cymbals

Snare Drum
Bass Drum

Flute
Oboe

B^b Clarinets 1
2

E^b Alto
Saxophones 1
2

B^b Trumpets 1
2

F Horn

Trombones 1
2

Baritone
Basses

Timpani

Cymbals

Snare Drum
Bass Drum