

WALTZING MATILDA

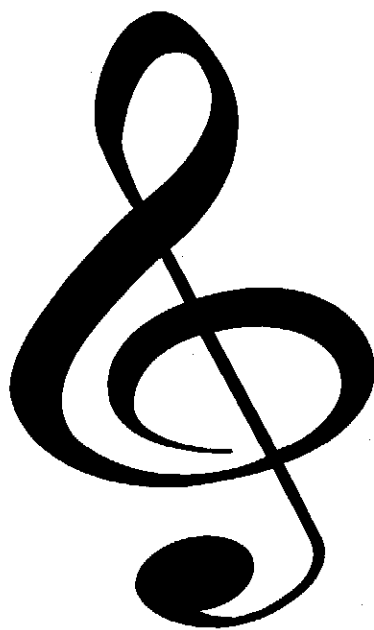
**Traditional Australian Song
Arranged by David Shaffer**

**Catalog No. 011-2016-00
Extra Score Catalog No. 011-2016-02**

**Price Complete Set: \$45.00
Extra Full Score: \$5.00**

Grade: 2

Barnhouse
Music Publications



C.L. BARNHOUSE COMPANY®
Music Publishers Since 1886
www.barnhouse.com

WALTZING MATILDA

Traditional Australian Song

3

Conductor Score

Arr. by David Shaffer
A.S.C.A.P.

011-2016

Bright $\text{♩} = 120$

Flute
Oboe

B♭ Clarinets 1/2

E♭ Alto
Saxophones
(Alto Clarinet) 1/2

B♭ Trumpets 1/2

F Horn

Trombones 1/2

Baritone B.C.
(Bassoon)
Basses

Timpani

Cymbals

Snare Drum
Bass Drum

This system of the conductor score includes parts for Flute/Oboe, B♭ Clarinets, E♭ Alto Saxophones, B♭ Trumpets, F Horn, Trombones, Baritone B.C. (Bassoon) Basses, Timpani, Cymbals, and Snare/Bass Drums. The music is in 4/4 time with a tempo of 120 beats per minute. The key signature has two flats. Dynamics include *f* and *mf*. A rehearsal mark '5' is present at the end of the system.

Fl.
Ob.

B♭ Cls. 1/2

A. Saxs.
(A. Cl.) 1/2

Tpts. 1/2

Hn.

Trbs. 1/2

Bar.
(Bsn.)
Basses

Timp.

Cym.

S.D.
B.D.

This system continues the conductor score with parts for Flute/Oboe, B♭ Clarinets, Alto Saxophones, Trumpets, Horns, Trombones, Baritone/Bassoon/Basses, Timpani, Cymbals, and Snare/Bass Drums. The notation includes various articulations and dynamics such as *f* and *mf*.

13

Fl. Ob.

BbCls. 1 2

A.Saxs. (A.Cl.) 1 2

Tpts. 1 2

Hn.

Trbs. 1 2

Bar. (Bsn.) Basses

Timp.

Cym.

S.D. B.D.

p

ff

mf

mf

mf to F-Bb-Eb

19

23

Fl. Ob.

BbCls. 1 2

A.Saxs. (A.Cl.) 1 2

Tpts. 1 2

Hn.

Trbs. 1 2

Bar. (Bsn.) Basses

Timp.

Cym.

S.D. B.D.

ff

mf

mf

mf

ff

ff

2/4

4/4

27

Fl. Ob.

BbCls. 1 2

A.Saxs. (A.Cl.) 1 2

Tpts. 1 2

Hn.

Trbs. 1 2

Bar. (Bar.) Basses

Timp.

Cym.

S.D. B.D.

1st only

f

fp

f

Sus.

Cr.

34

Fl. Ob.

BbCls. 1 2

A.Saxs. (A.Cl.) 1 2

Tpts. 1 2

Hn.

Trbs. 1 2

Bar. (Bar.) Basses

Timp.

Cym.

S.D. B.D.

+2nd

f

fp

f

fp

p

Sus.

Cr.

47 Maestoso

Fl. Ob.

Bb Cls. 1 2

A. Saxs. (A. Cl.) 1 2

Tpts. 1 2

Trbs. 1 2

Bar. (Bsn.) Basses

Timp.

Cym.

S.D. B.D.

54

Fl. Ob.

Bb Cls. 1 2

A. Saxs. (A. Cl.) 1 2

Tpts. 1 2

Hn.

Trbs. 1 2

Bar. (Bsn.) Basses

Timp.

Cym.

S.D. B.D.

Fl.
Ob.

Bb Cls. 1
2

A. Saxs.
(A. Cl.) 1
2

Tpts. 1
2

Hn.

Trbs. 1
2

Bar.
(Esn.)
Basses

Timp.

Cym.

S.D.
B.D.

Rubato 43

♩ = 76

Fl.
Ob.

Bb Cls. 1
2

A. Saxs.
(A. Cl.) 1
2

Tpts. 1
2

Hn.

Trbs. 1
2

Bar.
(Esn.)
Basses

Timp.

Cym.

S.D.
B.D.