

# A CHRISTMAS SPECIAL

Traditional Christmas Melodies

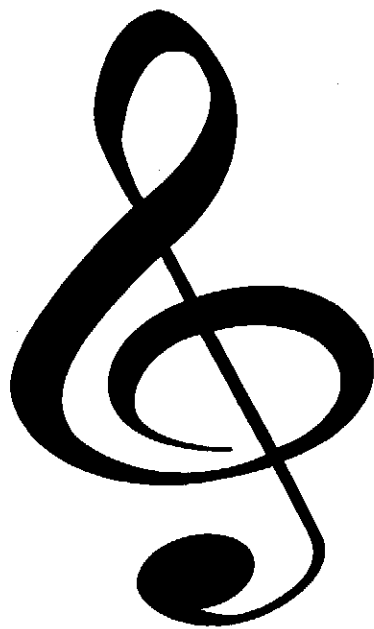
Arr. David Shaffer

Catalog No. 011-2005-00  
Extra Score Catalog No. 011-2005-02

Price Complete Set: \$23.00  
Extra Full Score: \$5.00

Grade: 1 1/2

**Barnhouse**  
*Music Publications*



**C.L. BARNHOUSE COMPANY®**  
*Music Publishers Since 1886*  
[www.barnhouse.com](http://www.barnhouse.com)

# A CHRISTMAS SPECIAL

1

Conductor Score

Traditional Christmas Melodies

arr. David Shaffer  
A.S.C.A.P.

12-2005

Allegro (♩ = 132)

+Bells

The score is divided into two systems. The first system includes parts for Flute/Oboe, B♭ Clarinets (1 & 2), E♭ Alto Saxophones (1 & 2), B♭ Trumpets (1 & 2), F Horn, Trombones (1 & 2), Baritone Basses, Timpani, Sleigh Bells/Cymbals, and Snare Drum/Bass Drum. The second system includes parts for Flute/Oboe, Clarinets (1 & 2), Alto Saxophones (1 & 2), Trumpets (1 & 2), Horn, Trombones (1 & 2), Baritone Basses, Timpani, Sleigh Bells/Cymbals, and Snare Drum/Bass Drum. The score features various musical notations including dynamics (f, mp, rit.), articulation (accents, slurs), and performance instructions (e.g., +Bells).

© 1987 Birch Island Music Press, P.O. Box 680, Oskaloosa, IA 52577  
International copyright secured. All rights reserved. Printed in U.S.A.

3474

WARNING! This composition is protected by copyright law. To copy or reproduce it by any method is an infringement of the copyright law.

12 ♩ = 120

Fl. Ob.

Cls. 1/2

A. Saxs. 1/2

Tpts. 1/2

Hn.

Trbs. 1/2

Bar. Basses

Timp.

S. Bells Cym.

S.D. B.D.

Sus.

16

20

Fl. Ob. + Bells

Cls. 1/2

A. Saxs. 1/2

Tpts. 1/2

Hn.

Trbs. 1/2

Bar. Basses

Timp.

S. Bells Cym.

S.D. B.D.

p

p

p

Low W.W.

p

24

Fl. Ob.

Cls. 1 2

A.Saxs. 1 2

Tpts. 1 2

Hn.

Trbs. 1 2

Bar. Basses

Timp.

S. Bells Cym.

S.D. B.D.

+Brass

to Sus.

Cr.

rit. (Fl. div.)

29 Stately ♩-116

Fl. Ob.

Cls. 1 2

A.Saxs. 1 2

Tpts. 1 2

Hn.

Trbs. 1 2

Bar. Basses

Timp.

S. Bells Cym.

S.D. B.D.

marcato

ff marcato

fp

fp

Fl. Ob.

Cls. 1 2

A.Saxs. 1 2

Tpts. 1 2

Hn.

Trbs. 1 2

Bar. Basses

Timp.

S. Bells Cym.

S.D. B.D.

*sim.*

rit.

37 Maestoso ♩-92

(Fl. only)

Fl. Ob.

Cls. 1 2

A.Saxs. 1 2

Tpts. 1 2

Hn.

Trbs. 1 2

Bar. Basses

Timp.

S. Bells Cym.

S.D. B.D.

*ff*

*fp*

*vc*

Fl. Ob.

Cla. 1/2

A.Saxs. 1/2

Tpts. 1/2

Hn.

Trbs. 1/2

Bar. Basses

Timp.

S.Bells Cym.

S.D. B.D.

+Bells +Ob. 45

*p* *ff* *ff* *ff*

Solo muted Tutti (no mute)

Low W.W. +Brass

Fl. Ob.

Cla. 1/2

A.Saxs. 1/2

Tpts. 1/2

Hn.

Trbs. 1/2

Bar. Basses

Timp.

S.Bells Cym.

S.D. B.D.

*f* *ff* *ff* *ff* *ff* *ff*

(Jingle Bells)

53 Allegro  $\text{♩} = 120$

acc.

Fl. Ob.

Cl. 1 2

A.Sax. 1 2

Tpts. 1 2

Hn.

Trbs. 1 2

Bar. Basses

Timp.

S. Bells Cym.

S.D. B.D.

59 Fl. + Bells Solo

Fl. Ob.

Cl. 1 2

A.Sax. 1 2

Tpts. 1 2

Hn.

Trbs. 1 2

Bar. Basses

Timp.

S. Bells Cym.

S.D. B.D.

Solo

67

Fl. Ob.

Cls. 1 2

A.Saxs. 1 2

Tpts. 1 2

Hn.

Trbs. 1 2

Bar. Basses

Timp.

S.Bells Cym.

S.D. B.D.

Fl. Ob.

Cls. 1 2

A.Saxs. 1 2

Tpts. 1 2

Hn.

Trbs. 1 2

Bar. Basses

Timp.

S.Bells Cym.

S.D. B.D.



73

Fl. Ob.  
Cls. 1 2  
A. Saxs. 1 2  
Tpts. 1 2  
Hn.  
Trbs. 1 2  
Bar. Basses  
Timp.  
S. Bells Cym.  
S.D. B.D.

This musical score covers measures 73 through 76. It features a woodwind section with Flute/Oboe, Clarinets (1 and 2), and Alto Saxophones (1 and 2). The brass section includes Trumpets (1 and 2), Horns, Trombones (1 and 2), and Baritone/Bass players. The percussion section consists of Timpani, Snare Drum, and Bass Drum. The woodwinds and brasses play sustained notes with accents and dynamic markings such as *sfz* and *p*. The timpani part features a rhythmic pattern of eighth notes. The snare and bass drums provide a steady accompaniment.

Fl. Ob.  
Cls. 1 2  
A. Saxs. 1 2  
Tpts. 1 2  
Hn.  
Trbs. 1 2  
Bar. Basses  
Timp.  
S. Bells Cym.  
S.D. B.D.

This musical score covers measures 77 through 80. The woodwind and brass sections play sustained notes with accents and dynamic markings such as *ff*. The timpani part features a rhythmic pattern of eighth notes. The snare and bass drums provide a steady accompaniment. A "choke" instruction is present in the snare drum part in measure 80. The score concludes with a double bar line.