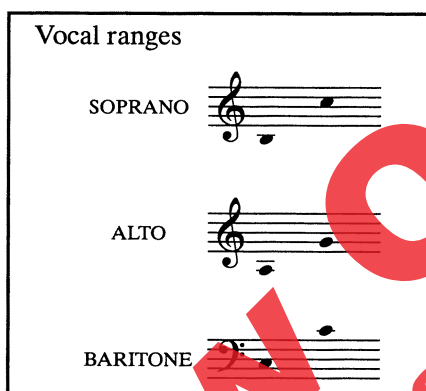


JOYFUL SONGS WE SING IN CELEBRATION

SAB, accompanied

By **WOLFGANG AMADEUS MOZART**

Edited and Arranged by
PATRICK M. LIEBERGEN



Wolfgang Amadeus Mozart was a highly successful composer of the Viennese Classical style and is highly revered today as one of the most important composers of all time. Mozart was known for his ability to compose in the many forms of the Classical era. His contributions to sacred choral music consisted of masses, a requiem, and many miscellaneous works for various performance occasions. He composed a lesser amount of secular works, including canons and two cantatas for Masonic occasions. Mozart was a member of a Masonic lodge in the last years of his life.

JOYFUL SONGS WE SING IN CELEBRATION is found in the first and last portions of Mozart's cantata *EINE KLEINE FREIMAURER*, K. 623, which he composed for the dedication of a new Masonic temple. Mozart made his last public appearance at this dedication in November, 1791.

The source for this edition is *W.A. Mozart's Werke*, Series IV/1, p. 40, published by Breitkopf and Härtel in Leipzig. This work was originally scored for TTB voices with an orchestral accompaniment of strings, flute, two oboes and two horns. This edition for SAB voices includes a keyboard reduction of the instrumental and vocal parts as the accompaniment. Modern clefs, tempo, dynamic indications and English words have been added by the editor.

The very joyful message of the text should be conveyed in performance by a highly rhythmic and energized presentation. Both accompanist and singers should accent the sixteenth notes to provide a great amount of rhythmic drive in performance. The natural inflections of the English text should be heard by the listener as the musical ideas are contrasted with the suggested dynamic changes.

Patrick Liebergen

JOYFUL SONGS WE SING IN CELEBRATION

SAB, accompanied

English Setting by
PATRICK M. LIEBERGEN

from EINE KLEINE FREIMAURER
by WOLFGANG AMADEUS MOZART (1756 - 1791)
Edited and Arranged by PATRICK M. LIEBERGEN

Performance time: 1:10

Energetically and rhythmically (♩ = ca. 120 - 126)

ACCOMP.

f

S

f

Joy - ful songs we sing in cel - e - bra - tion; hear the

A

f

Joy - ful songs we sing in cel - e - bra - tion; hear the

B

f

Joy - ful songs we sing in cel - e - bra - tion; hear the

© 1996 Belwin Mills Publishing Corp. (ASCAP)

All Rights Assigned to and Controlled by Alfred Publishing Co., Inc.
All Rights Reserved including Public Performance. Printed in USA.

mu - sic all a - round. Come and join the mer - ry ju - bi -

mu - sic all a - round. Come and join the mer - ry ju - bi -

mu - sic all a - round. Come and join the mer - ry ju - bi -

la - tion; let your voices now re - sound! On this

la - tion; let your voices now re - sound!

la - tion; let your voices now re - sound!

mp

mp

14

cresc.
 day with glad - ness ring - ing, - raise a cheer to - geth - er

mp *cresc.*
 On this day now raise a cheer - to - geth - er

14

cresc.

mf *f*
 sing - ing; come and make a might - y sound! Joy - ful

mf *f*
 sing - ing; come and make a might - y sound! Joy - ful

mf *f*
 Come and make a might - y sound! Joy - ful

mf *f*

20

songs we sing in cel - e - bra - tion; hear the mu - sic all a -

songs we sing in cel - e - bra - tion; hear the mu - sic all a -

songs we sing in cel - e - bra - tion; hear the mu - sic all a -

20

round. Come and join the mer - ry ju - bi - la - tion; let your

round. Come and join the mer - ry ju - bi - la - tion; let your

round. Come and join the mer - ry ju - bi - la - tion; let your

27

voic - es now_ re - sound. Let your voic - es now re -

voic - es now_ re - sound. Let your voic - es now re -

voic - es now re - sound. Let your voic - es now re -



This system contains three vocal staves and a piano accompaniment. The vocal parts are in treble clef, and the piano part is in bass clef. A box with the number '27' is placed above the first vocal staff. The lyrics are: 'voic - es now_ re - sound. Let your voic - es now re -'.

27

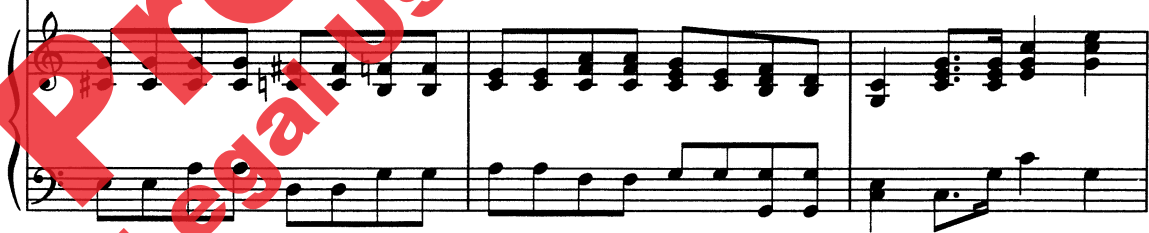
sound, let your voic - es now_ re - sound!

sound, let your voic - es now_ re - sound!

sound, let your voic - es now re - sound!

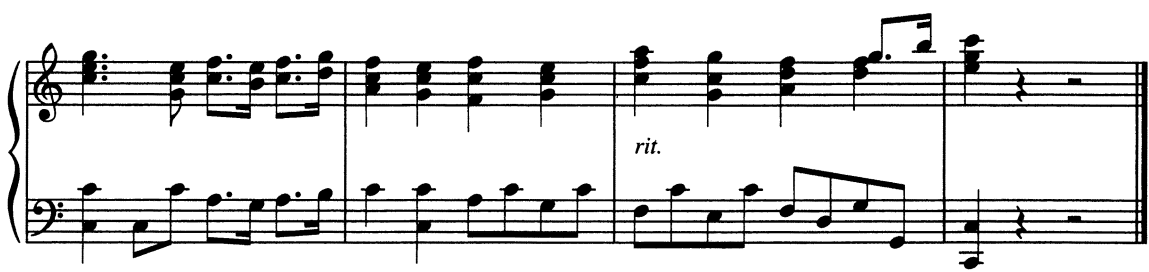


This system contains three vocal staves and a piano accompaniment. The vocal parts are in treble clef, and the piano part is in bass clef. A box with the number '27' is placed above the first vocal staff. The lyrics are: 'sound, let your voic - es now_ re - sound!'.



This system shows the piano accompaniment for the third system, consisting of two staves in bass clef.

rit.



This system shows the piano accompaniment for the fourth system, consisting of two staves in bass clef. The word 'rit.' is written above the piano part.

Preview Only
Legal Use Requires Purchase



Alfred Publishing Co., Inc.
16320 Roscoe Blvd., Suite 100
P.O. Box 10003
Van Nuys, CA 91410-0003
alfred.com