

Press On

D.B.

DAN BURGESS

With feeling
N. C.

Am Am7 C/D D7 D7 Dm7(b5) A Ab

p *mp* *f*

This system contains the first three measures of the piano introduction. The right hand features a melodic line with a trill in the first measure, followed by a series of eighth notes. The left hand provides a steady accompaniment with quarter notes. Dynamics range from piano (*p*) to forte (*f*).

C Csus C Dm7 G G7 C(2) C C(2) C

l.h. *mp*

This system contains measures 4 through 7. The left hand has a specific instruction 'l.h.' pointing to a chord in the first measure. The right hand continues the melodic line with some slurs. Dynamics include mezzo-piano (*mp*).

WOMEN in unison

[1] *With conviction*

mp C Em/C C/E F(2) F F(2) F/E Dm Dm7 G(2) G G(2)/F G/F

When the val - ley is deep, When the moun - tain is steep,

This system contains the first two measures of the vocal entry. The vocal line is in a soprano register, and the piano accompaniment is in a lower register. Dynamics include mezzo-piano (*mp*).

[5]

Em C/E F(2) F Am/F F/E Dm F/D G7sus G7

When the bod - y is wea - ry, When we stum - ble and fall; —

This system contains measures 5 and 6 of the vocal entry. The vocal line continues with a melodic phrase. Dynamics include piano (*p*).

[9] CHOIR in unison

C Em/C C/E F(2) F F(2) F/E Dm Dm7 G(2) G G(2)/F G/F



When the choic - es are hard, When we're bat - tered and _ scarred,



[13]

Em C/E F(2) F Am/F F/E Dm F/D G7sus G7

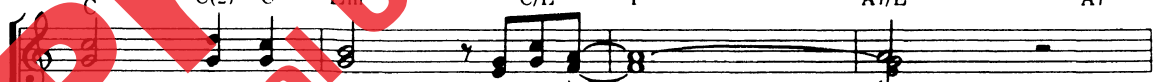


When we've spent_ our re - sourc - es, When we've giv - en our all -



[17] Forcefully

C C(2) C Em C/E F A7/E A7(b9) A7



in Je - sus name we press on,



Forcefully



[21] Dm Dm(2) Dm Dm7/C G/B G7 Dm7/G G7

In Je - sus' name we press on; Dear

[25] C Csus C E7 E7(b9)E7/G# Am Am(2) Am7 C/D D7 Dm7(b5) A Ab

Lord, with the prize clear be-fore our eyes,

[29] Csus C/G C/G Dm7/G G7 C(2) C fAb7 rit. Gb Ab Ab7

We find the strength to press on.

CHOIR in unison

[33] *Soaringly*

D⁷ a tempo D⁷(2) D⁷ Fm D⁷/F G⁷(2) G⁷ G⁷(2) G⁷ B⁷/F B⁷ B⁷(b9)

In Je - sus' name we press on,

f a tempo

[37]

div. E^bm E^bm(2) E^bm E^bm7/D^b

In Je - sus' name we press on,

[41]

A⁷ E^bm7/A^b A⁷ D^b D^bsus D^b F7 F7(b9) F7/A

Dear Lord, with the prize

[45]

B \flat m(2) B \flat m B \flat m(2) B \flat m7 D \flat /E \flat E \flat 7 E \flat 7 B \flat E \flat m7(b9) A \flat D \flat D \flat sus A \flat D \flat A \flat

clear be - fore our eyes, We find the

E \flat m7/A \flat A \flat 7 D \flat Fm/D \flat D \flat /F G \flat (2) G \flat G \flat (2) G \flat /F

strength to press on!

E \flat m E \flat m7 E \flat m7/A \flat rit. A \flat 7 D \flat (2) D \flat D \flat /A \flat D \flat (2) Fine

To press on!

rit. l.h. r.h. Fine

Preview Only
Legal Use Requires Purchase



Alfred Publishing Co., Inc.
16320 Roscoe Blvd., Suite 100
P.O. Box 10003
Van Nuys, CA 91410-0003
alfred.com