

BRING A TORCH, JEANNETTE, ISABELLA

for Four-Part Chorus of Mixed Voices, *a cappella*

Traditional French

Arranged by
ALICE PARKER and ROBERT SHAW

Lightly
mp

SOPRANO

ALTO

TENOR

BASS

ACCOMP.
(for rehearsal only)

Bring a torch, Jean - nette, Is - a - bel - la. Bring a

Bring a torch, Jean - nette, Is - a - bel - la. Bring a

Bring a torch, Jean - nette, Is - a - bel - la. Bring a

Bring a torch, Jean - nette, Is - a - bel - la. Bring a

Lightly
mp

5

p legato

torch, come hur - ry and run. It is Je - sus, good

p legato

torch, come hur - ry and run. It is Je - sus, good

p legato

torch, come hur - ry and run. It is Je - sus, good

p legato

torch, come hur - ry and run. It is Je - sus, good

p legato

10

This carol has been recorded by the Robert Shaw Chorale on RCA Victor Album # 2139.
Approximate duration 1:30.

15

folk of the vil - lage, Christ is born, and Ma - ry's call - ing:

folk of the vil - lage, Christ is born, and Ma - ry's call - ing: *esp.*

folk of the vil - lage, Christ is born, and Ma - ry's call - ing:

folk of the vil - lage, Christ is born, and Ma - ry's call - ing:

This system contains four vocal staves and two piano staves. The lyrics are: "folk of the vil - lage, Christ is born, and Ma - ry's call - ing:". The first staff has a box with the number 15. The second staff includes the instruction "esp.". The piano accompaniment is in the bottom two staves.

15

Ah! Ah! beau - ti - ful is the Moth - er; Ah!

Ah! Ah! beau - ti - ful is the Moth - er; Ah!

Ah! Ah! beau - ti - ful is the Moth - er; Ah!

Ah! Ah! beau - ti - ful is the Moth - er; Ah!

Ah! Ah! beau - ti - ful is the Moth - er; Ah!

This system contains four vocal staves and two piano staves. The lyrics are: "Ah! Ah! beau - ti - ful is the Moth - er; Ah!". The first staff has a box with the number 20. The piano accompaniment is in the bottom two staves.

20

20

25

p poco marc.

Ah! beau - ti - ful is the Child! _____ It is

p poco marc.

Ah! beau - ti - ful is the Child! _____ It is

pp

Ah! beau - ti - ful is the Child! _____ It is

Ah! beau - ti - ful is the Child!

25

p poco marc.

Ah! beau - ti - ful is the Child!

30

wrong, when the Ba - by is sleep - ing, It is wrong_ to speak_ so

wrong, when the Ba - by is sleep - ing, It is wrong_ to speak_ so

wrong, _____ (ng) _____ to speak so

30

wrong, _____ (ng) _____ to speak so

35

pp

loud;

Si - lence now,

loud;

mp

loud;

Si - lence now, as you come near the cra - dle,

mp

Si - lence now, as you come near the cra - dle,

35

pp

mp

40

45

pp
Si - lence now,

Lest you a - wak - en lit - tle Je - sus, Ah! Ah!

Lest you a - wak - en lit - tle Je - sus, Ah! Ah!

40

45

pp

50

Si - lence now, _____ Si - lence now! _____

Si - lence now, _____ Si - lence now! _____

beau - ti - ful is the Moth - er, Ah! Ah! beau - ti - ful

beau - ti - ful is the Moth - er, Ah! Ah! beau - ti - ful

50

55

mf warmly

Skies are glow-ing, the hea-vens are

mf warmly

Skies are glow-ing, the hea-vens are

mf warmly

is the Child! _____ Skies are glow-ing, the hea-vens are

mf warmly

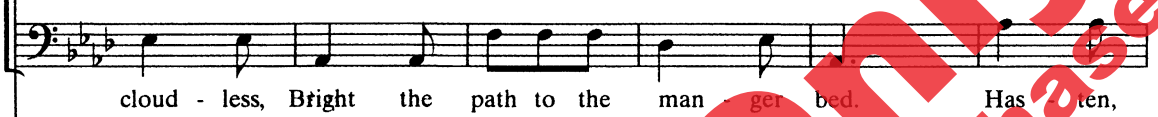
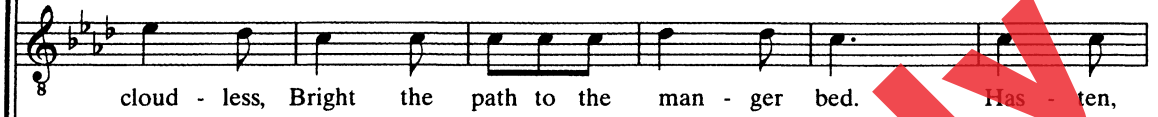
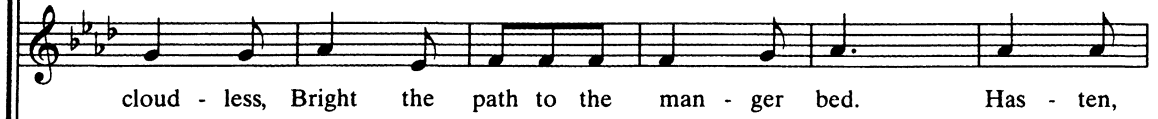
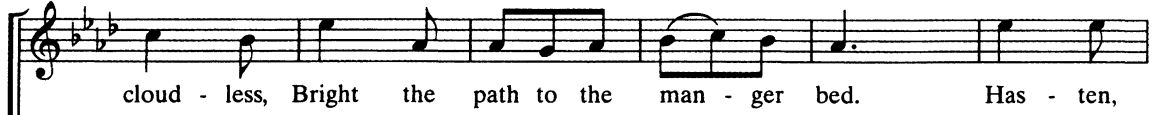
is the Child! _____ Skies are glow-ing, the hea-vens are

55

mf warmly

55

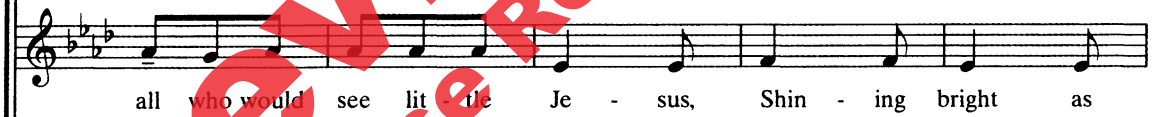
60



60



65



65



70

yon - der star, Ah! Ah! beau - ti - ful is the

yon - der star, Ah! Ah! beau - ti - ful is the

8 yon - der star, Ah! Ah!

yon - der star, Ah! Ah! beau - ti - ful is the

75

Moth - er. Ah! Ah! beau - ti - ful is the

(non rit.)

Moth - er. Ah! Ah! beau - ti - ful is the

(non rit.)

(non rit.) esp.

Ah! Ah! beau - ti - ful

(non rit.) esp.

75

Moth - er. Ah! Ah! Ah! beau - ti - ful

(non rit.)

esp.

80

pp (as an echo)

Child! Ah! Ah! beau - ti - ful is the

pp (as an echo)

Child! Ah! Ah! beau - ti - ful is the

Ah! Ah! beau - ti - ful is the Moth - er,

Ah! Ah! beau - ti - ful is the Moth - er,

80

pp (as an echo)

85

ten.

rit. al fine

90

Moth - er, Beau - ti - ful is the Child!

Moth - er, Beau - ti - ful is the Child!

Ah! Ah! Beau - ti - ful is the Child!

Ah! Ah! Beau - ti - ful is the Child!

85

ten.

rit. al fine

90

Preview Only
Legal Use Requires Purchase

Preview Only
Legal Use Requires Purchase



alfred.com