

THE WIZARD OF OZ

Choral Revue

SATB, accompanied

Arranged by
GREG GILPIN (ASCAP)

Approximate performance time: 10:05

Grandioso, ♩ = 72

Piano

S
A

Oo

T
B

slide

faster

slowly

unison *f*

Some - where o - ver the rain - bow,

unison *f*

moving

way up high.

11 *dramatic* *div.*
Ah

dramatic *rit.*

14 ♩ = 116

14 ♩ = 116

MUNCHKINLAND
Music by HAROLD ARLEN,
Lyric by E. Y. HARBURG*

(Glenda) Solo *mp*

Come

slowing



$\text{♩} = 116$

out, come out wher - ev - er you

p

p

$\text{♩} = 116$

mp

are and meet the young la - dy who

unis. mp

mp

24

28

fell from a star. She brings you good

fell from a star. Oo

p

p

news or have n't you heard? When she

32

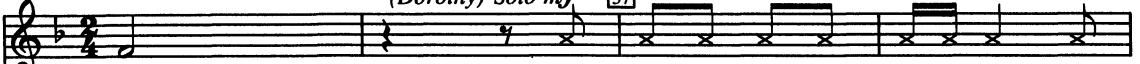
fell out of Kan - sas a mir - a - cle oc -

rit. 3

rit.

♩ = 144

(Dorothy) Solo *mf* 37



curred.

It real - ly was no mir - a - cle, what

♩ = 144

37



hap - pened was just this.

The wind be - gan to switch, the

41

41



house to pitch, and sud - den - ly the hing - es start - ed

45

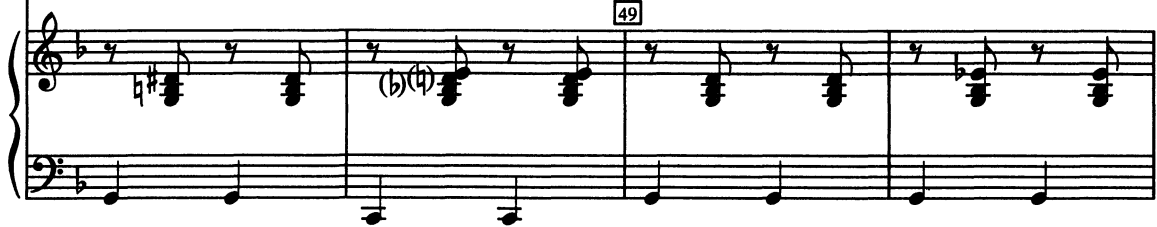
45



to un - hitch. Just then, a witch, to

49

49



53

sat - is - fy an itch went fly - ing on her broom - stick

57

thumb - ing for a hitch.

S A (unis.) *f* And oh, what hap - pened then was

T B (unis.) *f*

61

S A *mf* rich! The house be - gan to pitch, the

T B *mf* The house be - gan to

61

mf

65

kitch - en took a slitch, it land - ed on the wick - ed witch in the
pitch. It took a slitch.

65

69

mid - dle of a ditch. Which was not a health - y sit -

69

73

- u - a - tion for a wick - ed witch who be - gan to

73

77 *unis. rit.*

twitch and was re - duced to just a stitch of what was

unis.

77 *rit.*

slowly *div.* $\text{♩} = 76$

once the wick - ed witch!

slowly *f* *dramatic* $\text{♩} = 76$

82 *unis. f*

Ding - Dong, the witch is dead!

f *unis. f*

82

DING-DONG! THE WITCH IS DEAD

Music by HAROLD ARLEN, Lyric by E.Y. HARBURG*

85 $\text{♩} = 120$ *mf*

Ding - Dong, the witch is dead! Which old witch? The wick - ed witch.

85

mf

89

div.

Ding - Dong, the wick - ed witch is dead! Ah

89

93

Wake up, you sleep - y head, rub your eyes, get out of bed.

93

97

Wake up, the wick - ed witch is dead! _____ She's

97

101 *div.*

gone where the gob - lins go be - low, be - low, be - low. Yo -

101

105

ho, let's o - pen up and sing, and ring the bells out:

105

Preview Only
 Legal Use Requires Purchase

109 unis.

mf

unis.

Ding - Dong! the mer - ry - o sing it high, sing it low.

unis.

109

mf

113

Let them know the wick - ed witch

unis. *f*
p

113

f

vd || *o*

117

dead!

117

LULLABY LEAGUE/
LOLLYPOP GUILD
Music by HAROLD ARLEN,
Lyric by E. Y. HARBURG*
optional trio

120 *suddenly slower* *mp* *p* $\text{♩} = 72$

Ah _____ We re-pre-sent the

120 *mp suddenly slower* *rit.* *p* $\text{♩} = 72$

div.

Lul-la-by League, the Lul-la-by League, the Lul-la-by League, and

126 *rit.* *a tempo*

in the name of the Lul-la-by League, we wish to wel-come you to

126 *rit.* *a tempo*

130 ♩ = 144

Munch-kin-land! We

unis.

130 ♩ = 144

134 ♩ = 116

re - pre - sent the Lol - ly - pop Guild, the Lol - ly - pop Guild, the

optional trio mp

134 ♩ = 116

mf

138 *rit.*

Lol - ly - pop Guild, and in the name of the Lol - ly - pop Guild, we

unis. a tempo

138 *rit.*

wish to wel-come you to Munch-kin - land. We

unis. f

f

(b)
a tempo

143 ♩ = 84

wel - come you to Munch - kin - land. Tra la la la la la, Tra la

143 ♩ = 84

147

la, Tra la la. Tra la la la la la la. From

147

151

now — on — you'll be his - to - ry, you'll be hist, you'll be hist, you'll be

151

his - to - ry, and we will glo - ri - fy your name,

rit. div.

rit.

155 *a tempo unis.*

you'll be a bust, be a bust, be a bust, in the Hall of

div.

unis.

155

a tempo

159 *unis.*

Fame. Tra la la la la, Tra la la, Tra la la,

unis.

159

163

Tra la la la la la la. Tra la la la la, Tra la

163

WE'RE OFF TO SEE THE WIZARD
 Music by HAROLD ARLEN,
 Lyric by E.Y. HARBURG*

166 ♩. = 120

la, Tra la la, Tra la la la la. Fol - low the yel - low brick

unis. mp

166 ♩. = 120

rit.

mp

mf

road, fol - low the yel - low brick road.

mf

mf

170

Fol - low, fol - low, fol - low, fol - low, fol - low the yel - low brick

f

170

f

unis. sfz

road. We re _____ off to see the Wiz - ard, _____ the

mf

175

mf

179

won - der - ful Wiz - ard of Oz. _____ We hear he is a

179

whiz of a wiz if ev - er a wiz there was. If

unis.

183

ev - er, oh ev - er a wiz there was, the Wiz - ard of Oz is one be - coz, be -

unis.

183

187

coz, be - coz, be - coz, be - coz, be - coz, _____ be -

unis. f

f

unis. f

187

191

coz of the won - der - ful things he does.

191

f

195

We're off to see the Wiz - ard, _____ the

mf *f*

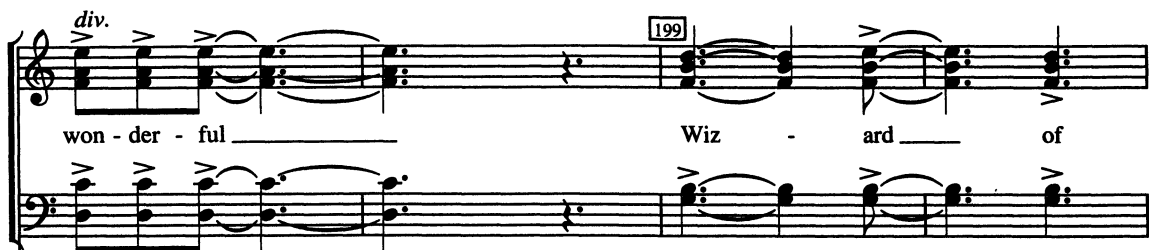
mf *f*

195

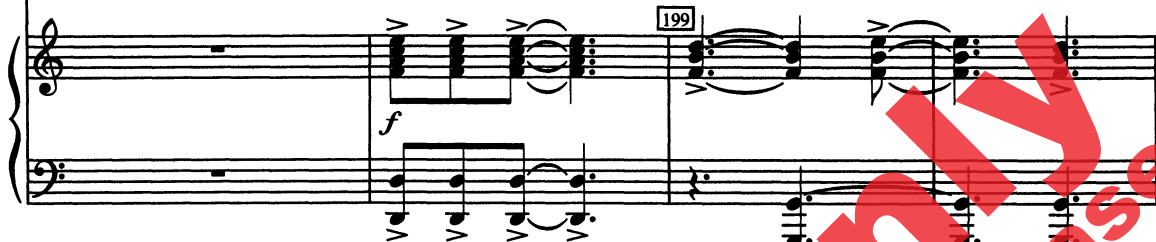
mf

div. 199

won - der - ful _____ Wiz - ard _____ of



f 199



slowly decresc.
unis.

Oz! _____

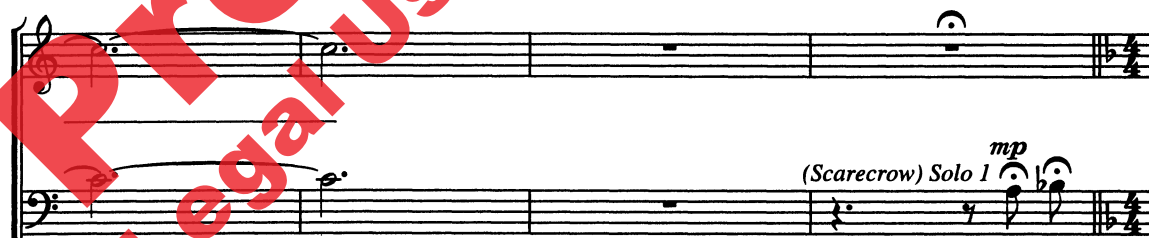
slowly decresc.
unis.



mf



mp
(Scarecrow) Solo 1



mp *rit.*

I could _____



IF I ONLY HAD A BRAIN
Music by HAROLD ARLEN, Lyric by E.Y. HARBURG*

209 ♩ = 120 (♩ = ♩ = ♩)

T
B

while a-way the hours _ con - fer - rin' with the flow'rs, _ con - sult - in' with the rain, _____

_____ and my head, I'd be scratch-in' while my thoughts were bus - y hatch-in' if I

(Tin Man) Solo 2 *mp* 217 on - ly had a brain. I'd be ten-der, I'd be gen-tle and

aw - ful sen - ti-men-tal re - gard-ing love and art. _____ I'd be

* © 1938 (Renewed 1965) METRO-GOLDWYN-MAYER INC.
© 1939 (Renewed 1966) EMI FEIST CATALOG INC.

221

friends with the spar-rows and the boy that shoots the ar - rows, if I on - ly had a heart. _____

221

(Lion) Solo 3 *mf* 225

Oh, I'd _____ be in my stride, a

225

mp

229

king down to the core, oh, I'd roar the way I nev - er roared be -

229

231

fore, and then I'd rrooof, and roar some more. I would

231

ALL mp

3

235

not be just a nuf - fn' my head all full of stuf - fn', my heart all full of pain, _____

235

mp

(Scarcrow)
Solo 1

_____ and per - haps I'd de - serve you and be e - ven wor - thy ev' you if I

3

239

S
A

(Dorothy)
Solo
mp

a home, We're

T
B

(Tin Man)
Solo 2

(Lion)
Solo 3

ALL *sfz*

unis. *sfz*

only had a brain, a heart, the nerve.

239

242 *mf* $\text{♩} = 120$

to see the Wiz - ard, _____
We're off to see the *mf* Wiz - ard, _____ the
We're off to see the

242 $\text{♩} = 120$

mf

246

div. *f* Wiz - ard, _____ the won - der - ful *f* Wiz - ard of
Wiz - ard, _____

246

f

$\text{♩} = 152$

pp Oz!

$\text{♩} = 152$

mf

Miss Gulch's Theme
(with Lions and Tigers and Bears and March of the Winkies)

253

253

mp

257

3 3 3 3

Li-ons and ti-gers and bears, oh, my! Li-ons and ti-gers and bears, oh, my!

257

261

3 3

Li-ons and ti-gers and bears, oh, my!

261

3 3

Li-ons and ti-gers and bears, oh, my!

mp

O - ee - oh, Yoh _____

3 3

265

v

O - ee - oh, Yoh _____

265 3 3

269 *div.* *f*

Ah _____

f

269 *molto rit.*

OPTIMISTIC VOICES
Music by HAROLD ARLEN and HERBERT STOTHART,
Lyric by E. Y. HARBURG*

273 $\text{♩} = 116$ *mf*

You're out of the woods, you're out of the dark, you're out of the

273 $\text{♩} = 116$ *mf*

277

night. _____ Step in - to the sun, step in - to the light. _____

277

281 *unis.*

Keep straight a - head for the most glo - ri - ous

unis.

281

285

place on the face of the earth or the sky.

285

289

Hold on - to your breath, hold on - to your heart, hold on - to your hope.

div

289

293

unis. **L'istesso tempo** *rit.* *mp*

March up to that gate and bid it o - pen, o - pen!

mp

293

L'istesso tempo

rit. *mp*

299 *accel. poco a poco*
mp

Ah _____

mp
unis.

Oo _____

299

slower *mp* *accel. poco a poco*

THE MERRY OLD LAND OF OZ
 Music by HAROLD ARLEN, Lyric by E. Y. HARBURG*

303 *unis. mf* $\text{♩} = 116$

Ha - ha - ha! Ho - ho - ho! and a

303 $\text{♩} = 116$ *mf*

307

coup-le of tra-la - las, that's how we laugh the day a - way, in the

307

* © 1938 (Renewed 1965) METRO-GOLDWYN-MAYER INC.
 © 1939 (Renewed 1966) EMI FEIST CATALOG INC.

311

mer-ry old land of Oz. "Bzz-'bzz-'bzz, chirp, chirp, chirp, and a

311

315

cou-ple of la - de - das." That's how the crick - ets crick all day in the

315

div. legato
mp

319

mer-ry old land of Oz. We get up at twelve and start to work at

319

323

one. _____ Take an hour for lunch and then at two we're

mp

323

327

done, jol-ly good fun! Ha - ha - ha! Ho - ho - ho! and a

unis. f *mf*

327

331

coup-le of tra - la - las, that's how we laugh the day a - way,

div.

331

334 *building*

with a ha - ha - ha! and a ho - ho - ho! and a ha - ha - ha! and a

building

334 *building*

338 *spoken f*

ho - ho - ho! and a ha - ha - ha! and a ha - ha - ha! in the mer-ry old land of

spoken f

338 *f*

Oz!

mf

346 *slowing*

Ah, oo,

346 *slowing*

oo,

350 **OVER THE RAINBOW**
 (Dorothy) Music by HAROLD ARLEN, Lyric by E. Y. HARBURG*
 Solo ♩ = 80 *p* slowly with some rubato

oo, Some - where ver the rain - bow

350 ♩ = 80

oo, Some - where ver the rain - bow

354

way up high, there's a

354

way up high, there's a

* © 1938 (Renewed 1965) METRO-GOLDWYN-MAYER INC.
 © 1939 (Renewed 1966) EMI FEIST CATALOG INC.

end solo

land that I heard of once in a lul - la - by.

358 *All p*

Some - where o - ver the rain - bow skies are _____

358

blue,

362

div.

skies are blue, _____ and the dreams that you dare to

blue, _____

362

accel. *unis.* 366

dream real - ly do come true. Some - day I'll wish up - on a star and

div. Oo, —

366 *accel.*

building
Where

wake up where the clouds are far be - hind me.

oo, — oo, — oo —

370 trou - bles melt like lem - on drops a - way a - bove the chim - ney tops, that's

like lem - on drops a - way a - bove the chim - ney tops, that's

the chim - ney tops, that's

370 *building*

slower
mf

374

unis. f a tempo

where - you'll - find me. _____ Some - where

mf

unis. f

find me.

mf slower

374

f a tempo

fly

o - ver the rain - bow blue - birds, _____ blue - birds fly. _____

fly. _____

378

unis. mp

why then, oh why can't

Birds fly o - ver the rain - bow, why, oh why can't

unis. mp

(b)

378

mp

382 Majestically

rit. *f* *div.*

I? Birds fly o - ver the rain - bow,

rit. *f*

382 Majestically

rit.

why then, oh why can't I?

rit.

ff

Ah!

ff



Preview Only
Legal Use Requires Purchase



Preview Only
Legal Use Requires Purchase