

Love Theme from "SUPERMAN," A Warner Bros. film

CAN YOU READ MY MIND

SATB, accompanied, with optional bass, guitar and drums*

Words by
LESLIE BRICUSSE

Music by
JOHN WILLIAMS
Arranged by
ALAN BILLINGSLEY

Performance time: approx. 3:20

Pop ballad (♩ = 76)

B♭/A♭ A♭ B♭/A♭ A♭ A♭/G♭ G♭ A♭/G♭ G♭ Cm7 Dm7

ACCOMP. *mp*

S
A ⁴ 5 *mp (unison)*
Can you read my__ mind? Do you know what it is you

T
B

E♭ F7sus F7 5 B♭ C/B♭ Cm7 F7sus F7

mp

⁸ do to me?__ Don't know who you__ are.

(unison) *mp*

9 B♭ F7sus F7 B♭ C/B♭

*Bass/Guitar/Drums: See pp. 10 and 11.

11 *mf*
 Just a friend from an-oth - er star. Here I *mf*

*E*b \flat m7 F7sus F7

13 am like a kid out of school, hold-ing

13 *mf* Fm7 A \flat /B \flat E \flat maj7

15 *mp*
 hands with a god, I'm a fool. Will you

Fm7 A \flat /B \flat E \flat maj7

4 17

look at me quiv-er-ing like a lit-tle girl— shiv-er-ing. You can *mp*

Detailed description: This block contains the vocal line for measures 17 and 18. The melody starts with a quarter note 'look', followed by a quarter note 'at', a quarter note 'me', a quarter note 'quiv-er-ing', a quarter note 'like', a quarter note 'a', a quarter note 'lit-tle', a quarter note 'girl', a quarter rest, a quarter note 'shiv-er-ing', and a quarter note 'You'. The lyrics 'You can' are positioned below the final note of measure 18. The dynamic marking *mp* is placed below the final note of measure 18.

17 B \flat /A \flat A \flat B \flat /A \flat A \flat A \flat /G \flat G \flat A \flat /G \flat G \flat

mp

Detailed description: This block contains the piano accompaniment for measures 17 and 18. The right hand plays chords: B \flat /A \flat , A \flat , B \flat /A \flat , A \flat , A \flat /G \flat , G \flat , A \flat /G \flat , and G \flat . The left hand plays a bass line with a half note 'B \flat ' in measure 17 and a half note 'G \flat ' in measure 18. The dynamic marking *mp* is placed above the first chord in measure 17.

19 21 *mf*

see right through— me. Can you read my—

Detailed description: This block contains the vocal line for measures 19 and 20. The melody starts with a half note 'see', a half note 'right', a half note 'through—', a half note 'me.', a quarter rest, a quarter note 'Can', a quarter note 'you', a quarter note 'read', a quarter note 'my—', and a quarter note 'my—'. The lyrics 'Can you read my—' are positioned below the final note of measure 20. The dynamic marking *mf* is placed above the first note of measure 21.

Cm7 Dm7 E \flat F F7 21 B \flat *mf*

mf

Detailed description: This block contains the piano accompaniment for measures 19 and 20. The right hand plays chords: Cm7, Dm7, E \flat , F, F7, and B \flat . The left hand plays a bass line with a half note 'C' in measure 19 and a half note 'B \flat ' in measure 20. The dynamic marking *mf* is placed above the first chord in measure 21.

22

mind? Can you pic - ture the things I'm

Detailed description: This block contains the vocal line for measures 21 and 22. The melody starts with a quarter note 'mind?', a quarter note 'Can', a quarter note 'you', a quarter note 'pic -', a quarter note 'ture', a quarter note 'the', a quarter note 'things', a quarter note 'I'm', and a quarter note 'I'm'. The lyrics 'Can you pic - ture the things I'm' are positioned below the final note of measure 22.

C/B \flat Cm7 F7sus F7

Detailed description: This block contains the piano accompaniment for measures 21 and 22. The right hand plays chords: C/B \flat , Cm7, F7sus, and F7. The left hand plays a bass line with a half note 'C' in measure 21 and a half note 'B \flat ' in measure 22.

24 25

think-ing of?___ Won-d'ring why you___ are

25

B \flat F7sus F7 B \flat C/B \flat

27

all the won - der - ful things you are... You can

Ebm7 F7sus F7

29

f fly. You be-long to the sky. You and

29 *f* Fm7 A \flat /B \flat Ebmaj7

31

I could be-long to each oth - er.

Fm7 A \flat /B \flat Cm7(\flat 5) F7

33

mf If you need a friend, I'm the one to

33 B \flat C/B \flat Cm7 B \flat /D E \flat Cm7

mf

36

mp fly to If you need to be loved, here I

37 E \flat maj9/F F7 B \flat maj7 E \flat maj7 B \flat maj7 E \flat maj7

mp

39 *am.* *mf* *f*

Read my mind! Here I

E m7(b5) Gm/A D Cm7 F7sus F7

Piano accompaniment for measures 39-41, featuring chords E m7(b5), Gm/A, D, Cm7, F7sus, and F7.

42

am like a kid out of school, hold-ing

42 *f*

A \flat /B \flat Ebmaj7

Piano accompaniment for measures 42-43, featuring chords A \flat /B \flat and Ebmaj7.

44 *mf*

hands with a god, I'm a fool. Will you

A \flat /B \flat Ebmaj7

Piano accompaniment for measures 44-45, featuring chords A \flat /B \flat and Ebmaj7.

8
46

look at me quiv-er-ing like a lit-tle girl— shiv-er-ing. You can *mf*

46 Bb/Ab Ab Bb/Ab Ab Ab/Gb Gb Ab/Gb Gb

mf

48 see right through me. If you need a

50

48 Cm7 Dm7 Eb F Bb

50

f

51 friend, I'm the one to fly to. *mf* If you

51 C/B Cm7 Bb/D Eb Cm7 Ebmaj9/F F7

54 need to be loved, here I *rit.* am. *mf*

If you need to be loved, Read my__ *mf*

54 *Bbmaj7 Ebmaj7 Bbmaj7 Ebmaj7 Em7(b5) Gm/A*

mf mp rit.

57 *a tempo rit.*

mind!

D E/D Em7 F#m7 Gmaj9 A9sus

a tempo decresc. rit.

60 *p*

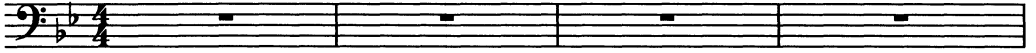
Oo

B(9) C#B B(9)

p

BASS/GUITAR/DRUMS*

Pop ballad (♩ = 76)



5 B♭ C/B♭ Cm7 F7sus F7 B♭ F7sus F7

mp

9 B♭ C/B♭ E♭m7 F7sus F7

13 Fm7 A♭/B♭ E♭maj7 Fm7 A♭/B♭ E♭maj7

mf

17 B♭/A♭ A♭ B♭/A♭ A♭ A♭/G♭ G♭ A♭/G♭ G♭ Cm7 Dm7 E♭ F F7

mp *mf*

21 B♭ C/B♭ Cm7 F7sus F7 B♭ F7sus F7

mf

25 B♭ C/B♭ E♭m7 F7sus F7

*Bass: Play the part as written.
 Guitar: Play ad lib., using the chord symbols as a guide.
 Drums: Play ad lib. in a pop ballad style.

Preview Only
Legal Use Requires Purchase



alfred.com