

As performed by Backstreet Boys

THE PERFECT FAN

SATB, accompanied, with optional guitar, bass and drums*

Music and Lyrics by
BRIAN T. LITRELL and THOMAS L. SMITH
Arranged by TEENA CHINN

Slowly ♩ = 66
(Guitar rest)

Piano
(Guitar,
Bass)

Chord symbols: A/C# B/D# E B/C# A/B

Dynamic: *mp*

Performance instruction: (with pedal) (Bass rest)

Soprano (S) and Alto (A) parts starting at measure 3.

Lyrics: 1. It takes a

Tempo/dynamics: *mp*

Performance instruction: 1st time: Off solo (unis.) 2nd time: unison

Tenor (T) and Bass (B) parts starting at measure 3.

Lyrics: 1. It takes a

Chord symbols: A/C# B/D# E Gm7 F#m7(4)

Continuation of vocal parts starting at measure 6.

Lyrics: lot to know - what is love. - It's not the
2. God has been - so - good, -

Piano accompaniment for the second system, starting at measure 6.

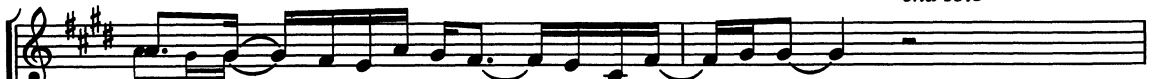
Chord symbols: F#m/E E(9) E A/C# B/D# E

Performance instruction: (Guitar play 2nd time only)

(Bass play 2nd time only)

* Guitar: Play ad lib. using chord symbols in piano part as a guide.
Bass: Double bottom notes in l.h. of piano part, adjusting octaves as needed.
Drums: See page 11.

end solo

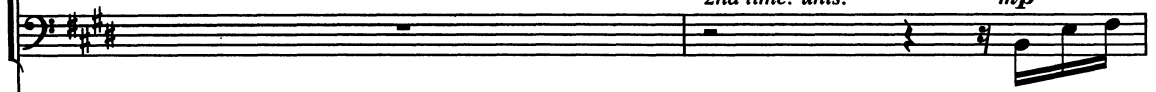


big things, but the lit-tle things that can mean e-nough.
bless-ing me with a fam-i-ly who did all they could.

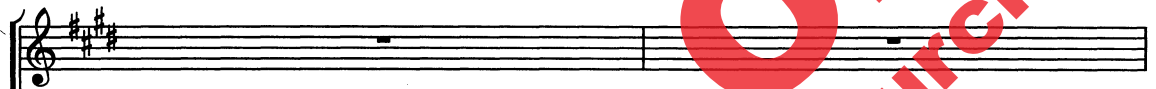
A lot of
And I've had

1st time: Opt. solo (unis.)
2nd time: unis.

mp



8 A/C# B G#m7 A

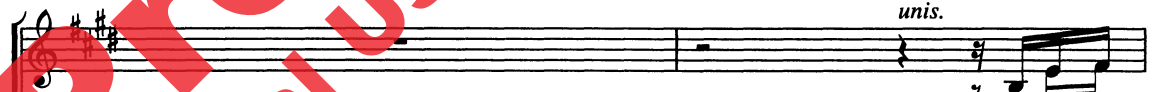


prayers to get me through;
man-y years of grace.

and there is
And it



10 F#m/E E(9) E A/C# G/D# E



nev-er a day that pass-es by, I don't think of you.
flat- ters me when I see a smile on your face.

You were
I wan-na

end solo

unis.



12 A/C# B G#m7 A

14

al - ways there _ for me, _____
 thank you for what _ you've done, _____ in

14 F#m/E E(9) E A/C# B/D# E

16 *mf*

push - ing me _ and guid - ing me al - ways to _ suc - ceed. _ }
 hopes I can _ give back to you, and be the per - fect son. } You

16 F#m Cm7 A Amaj7 B *mf*

18 *unis.*

showed me, _____ when I was young, _ just how _ to grow. _ You

unis.

18 *Guitar play both times* F#m/E E C#m7 B

Bass play both times

unis.

showed me _ ev - er - y - thing _ that I _ should know. _ You

unis.

20 F#m/E E G#m7 A6 A

unis.

showed me _ just how to walk with-out _ your hands, _ 'cause,

unis.

22 F#m/E E C#m7 B/D#

1.

Mom, you al- ways were _ the per-fect fan. _

24 D Bsus E/B 1. A/C# B/D# E A A(9) Bsus/C# A/B

27

27

A A(9) B/C# A/B

30

2.

You showed me how to love. You

30

2.

E F#m E/G# A E/B C+ C#m C#m9 G#m7 F#m7 A/B

33

showed me how to care. And you

33

C#m7 C#m9 G#m7 F#m9 F#m9(4) A(9) A

showed me _ that you would al - ways be there. _ I wan-na

35 E Emaj7 B/D# C#m F#9

37 *Sop. div.* *poco rit.*
thank you for _ that time, and I'm proud to say your mine. You

37 F#m7 G#m A B/C *poco rit.*

39 *a tempo* *f* *unis.*
showed me, _ when I was young, _ just how _ to grow. _ You

39 Gm/F F Dm7 C *f a tempo*

41 *unis.*
 showed me — ev - er - y - thing — that I — should know. — You

41 Gm/F F Am Gm/Bb

43 *unis.*
 showed me — just how to walk — with-out — your hands, — 'cause,

43 Gm/F F Dm7 C/E

45 *mf*
 Mom, you al-ways were — the per-fect fan. —

45 Ebmaj7 Bb6/C Bbmaj7/C Bb/D C/E F *mf*

dim.
Mom, you al - ways were, -

Basses only *dim.*

'Cause, Mom, you al - ways were, -

47 C/D B♭/C B♭ B♭/A *dim.*

49 *dim.*
Mom, you al - ways were, -

unis. *mp*

Mom, you al - ways were - the per-fect fan. -

Tenors only *unis.*

you know you al - ways were.

49 Gm7 C/D Ebmaj7 B♭6/C *mp*

32 *poco rit.*

(Spoken:) I love you, Mom.

52 B♭/D C/E F Am7 Gm7 F(9) *poco rit.*

THE PERFECT FAN

DRUMS

Slowly ♩ = 66

The drum score for 'The Perfect Fan' is written on ten staves, numbered 7, 12, 17, 22, 27, 32, 37, 41, 46, and 50. The piece begins in 4/4 time, indicated by a '4' over a bar line. At measure 7, the time signature changes to 2/4. The score includes various drum parts: Hi-Hat (marked with 'x' symbols), Bass Drum (marked with 'x' symbols), and Snare Drum (marked with 'x' symbols). Specific techniques are noted, such as 'Bass mf Drum', 'Rim of Snare Drum', 'Fill', 'S.D. loco', '1. Cymbal color', and 'Cymbal color'. Dynamics include *mf*, *f*, and *dim.*. Performance directions include 'Play both times', 'poco rit.', and 'a tempo'. The score concludes at measure 50 with a final 'poco rit.' marking.



Preview Only
Legal Use Requires Purchase



alfred.com