

FROM ~~STAR WARS~~
EPISODE III
 REVENGE OF THE SITH

BATTLE OF THE HEROES

With
MAY THE FORCE BE WITH YOU and
STAR WARS (Main Title)

Music by

JOHN WILLIAMS
 Arranged by JACK BULLOCK

INSTRUMENTATION

1	Conductor	2	1st Horn in F	WORLD PARTS	
1	Piccolo	2	2nd Horn in F	1	1st Horn in E \flat
3	1st C Flute	2	1st Trombone	1	2nd Horn in E \flat
3	2nd C Flute	2	2nd Trombone	1	1st Trombone in B \flat Bass Clef
2	Oboe	2	Euphonium	1	2nd Trombone in B \flat Bass Clef
3	1st B \flat Clarinet	1	Baritone Treble Clef	1	1st Trombone in B \flat Treble Clef
3	2nd B \flat Clarinet	4	Tuba	1	2nd Trombone in B \flat Treble Clef
3	3rd B \flat Clarinet	3	Mallet Percussion	1	Baritone in B \flat Bass Clef
1	E \flat Alto Clarinet		(Xylophone, Marimba, Chimes)	1	Tuba in E \flat Bass Clef
2	B \flat Bass Clarinet	1	Timpani	1	Tuba in E \flat Treble Clef
2	Bassoon	2	Percussion I (Snare Drum, Bass Drum)	1	Tuba in B \flat Bass Clef
2	1st E \flat Alto Saxophone	3	Percussion II (Crash Cymbal, Suspended Cymbal, Gong)	1	Tuba in B \flat Treble Clef
2	2nd E \flat Alto Saxophone				
1	B \flat Tenor Saxophone				
1	E \flat Baritone Saxophone				
3	1st B \flat Trumpet				
3	2nd B \flat Trumpet				
3	3rd B \flat Trumpet				

Please note: Our band and orchestra music is now being collated by an automatic high-speed system. The enclosed parts are now sorted by page count, rather than score order. We hope this will not present any difficulty for you in distributing the parts. Thank you for your understanding.

CONDUCTOR

From STAR WARS® EPISODE III: REVENGE OF THE SITH

BATTLE OF THE HEROES

with MAY THE FORCE BE WITH YOU and STAR WARS® (MAIN TITLE)

Music by JOHN WILLIAMS

Arranged by JACK BULLOCK

"May the Force Be With You"

Slowly ♩ = 76

C Piccolo

1

C Flutes

2

Oboe

1

Bb Clarinets

2

3

Eb Alto Clarinet

Bb Bass Clarinet

Bassoon

1

Eb Alto Saxophones

2

Bb Tenor Saxophone

Eb Baritone Saxophone

"May the Force Be With You"

Slowly ♩ = 76

1

Bb Trumpets

2

3

Horns in F

1

2

Trombones

1

2

Euphonium

Tuba

Mallet Percussion
(Xylophone, Marimba, Chimes)

Tune: G, Bb, C, Eb

Timpani

Percussion I
(Snare Drum, Bass Drum)

Percussion II
(Crash Cymbals, Suspended Cymbal, Gong)

1 2 3 4 5

May the Force Be With You

© 1977 WARNER-TAMLERLANE PUBLISHING CORP. and BANTHA MUSIC (BMI)
This Arrangement © 2005 WARNER-TAMERLANE PUBLISHING CORP. and BANTHA MUSIC
All Rights Reserved by WARNER-TAMERLANE PUBLISHING CORP.

All Rights Reserved including Public Performance

Conductor - 2

"Star Wars® (Main Title)"

8 Moderately fast $\text{♩} = 108$

Picc.

1

Fls.

2

Ob.

1

2

3

Cl. 1

2

3

A. Cl.

B. Cl.

Bsn.

1

2

A. Saxes.

T. Sax.

Bar. Sax.

1

2

3

Tpts.

Hns.

1

2

Tbns.

Euph.

Tuba

Mlt. Perc.

Xyl.

Timp.

Perc. I

Perc. II

S.D.

B.D.

Cr. Cyms.

6 7 8 9 10

"Battle of the Heroes"

16 Moderately ♩ = 92

Picc.

1

Fls.

2

Ob.

1

Cls.

2

3

A. Cl.

B. Cl.

Bsn.

1

A. Saxes.

2

T. Sax.

Bar. Sax.

"Battle of the Heroes"

16 Moderately ♩ = 92

1

Tpts.

2

3

1

Hns.

2

1

Tbns.

2

Euph.

Tuba

Mlt. Perc.

Mrb.

mp

Timp.

Perc. I

(edge)

ppp

Perc. II

16 17 18 19 20 21

Picc.

Fls. 1 2

Ob.

Cls. 1 2 3

A. Cl.

B. Cl.

Bsn.

A. Saxes. 1 2

T. Sax.

Bar. Sax.

Tpts. 1 2 3

Hns. 1 2

Tbns. 1 2

Euph.

Tuba

Mlt. Perc.

Timp.

Perc. I

Perc. II

Cue: Hns.

mf

p

22 23 24 25 26

30

Picc.

Fls. 1 2

Ob.

Cls. 1 2 3

A. Cl.

B. Cl.

Bsn.

A. Saxes. 1 2

T. Sax.

Bar. Sax.

Tpts. 1 2 3

Hns. 1 2

Tbns.

Euph.

Tuba

Mlt. Perc.

Timp.

Perc. I

Perc. II

mf

mf

p

30

Picc.

1
Fls.

2
Ob.

1
Cls.

2
3

A. Cl.

B. Cl.

Bsn.

1
A. Saxes.

2

T. Sax.

Bar. Sax.

1
Tpts.

2
3

1
Hns.

2

1
Tbns.

2

Euph.

Tuba

Mlt. Perc.

Timp.

Perc. I

Perc. II

Picc.

Fls. 1 2

Ob.

Cls. 1 2 3

A. Cl.

B. Cl.

Bsn.

A. Saxes. 1 2

T. Sax.

Bar. Sax.

Tpts. 1 2 3

Hns. 1 2

Tbn. 1 2

Euph.

Tuba

Mlt. Perc.

Timp.

Perc. I

Perc. II

43 44 45 46 47

Picc.

1

Fls.

2

Ob.

1

2

3

Cls.

A. Cl.

B. Cl.

Bsn.

1

2

A. Saxes.

T. Sax.

Bar. Sax.

1

2

3

Tpts.

Hns.

1

2

Tbn.

Euph.

Tuba

Mlt. Perc.

Timp.

Perc. I

Perc. II

48 49 50 51 52 53

54

Picc. *f*

1 *f*

Fls. 2 *f*

Ob. *f*

1 *f*

Cl. 2 *f*

3 *f*

A. Cl. *f*

B. Cl. *mf*

Bsn. *mf*

A. Sax. 1 *f*

2 *f*

T. Sax. *f*

Bar. Sax. *mf*

54

Tpts. 1 *ff*

2 *ff*

3 *ff*

Hns. 1 *mf*

2 *mf*

Tbns. 1 *f*

2 *f*

Euph. *mf*

Tuba *mf*

Mlt. Perc. *mf*

Timp. *mf* G to F

Perc. I *mf*

Perc. II *mf*

54 55 56 57 58

Musical score for conductor, measures 59-64. The score includes parts for Picc., Fls., Ob., Cls., A. Cl., B. Cl., Bsn., A. Saxes., T. Sax., Bar. Sax., Tpts., Hns., Tbns., Euph., Tuba, Mlt. Perc., Timp., Perc. I, and Perc. II. A large red watermark 'Preview Only' is overlaid diagonally across the score.

Picc. *ff* *mf* **69**

Fls. 1 *ff* *mf*

Fls. 2 *ff* *mf*

Ob. *ff* *mf*

Cls. 1 *ff* *mf*

Cls. 2 *ff* *mf*

Cls. 3 *ff* *mf*

A. Cl. *ff* *mf*

B. Cl. *ff* *mf*

Bsn. *ff* *mf*

A. Saxes. 1 *mf*

A. Saxes. 2 *mf*

T. Sax. *ff* *mf*

Bar. Sax. *ff* *mf*

Tpts. 1 *ff* *f* **69**

Tpts. 2 *ff* *f*

Tpts. 3 *ff* *f*

Hns. 1 *mf*

Hns. 2 *mf*

Tbns. 1 *ff* *mf*

Tbns. 2 *ff* *mf*

Euph. *ff* *mf*

Tuba *ff* *mf*

Mlt. Perc. Xyl. (hard mlts.) *mf*

Timp. *mf* D to E *mf*

Perc. I *f* *mf*

Perc. II *f* *mf*

Susp. Cym. *f* *mf*

65 66 67 68 69 70

Picc.

Fls. 1 2

Ob.

Cls. 1 2 3

A. Cl.

B. Cl.

Bsn.

A. Saxes. 1 2

T. Sax.

Bar. Sax.

Tpts. 1 2 3

Hns. 1 2

Tbns. 1 2

Euph.

Tuba

Mlt. Perc.

Timp.

Perc. I

Perc. II

E to D, F to G

80

Picc.

1

Fls.

2

Ob.

1

Cls.

2

3

A. Cl.

B. Cl.

Bsn.

1

A. Saxes.

2

T. Sax.

Bar. Sax.

1

2

3

Tpts.

1

Hns.

2

1

Tbns.

2

Euph.

Tuba

Mlt. Perc.

Timp.

Perc. I

Perc. II

77 78 79 80 81 82 83

Susp. Cym. ch

ff

85

Picc.

Fls. 1 2

Ob.

Cls. 1 2 3

A. Cl.

B. Cl.

Bsn.

A. Saxes. 1 2

T. Sax.

Bar. Sax.

85

Tpts. 1 2 3

Hns. 1 2

Tbn. 1 2

Euph.

Tuba

Mlt. Perc. Mrb.

Timp.

Perc. I

Perc. II Gong

84 85 86 87 88 89

94

Picc.

Fls. 1 2

Ob.

Cls. 1 2 3

A. Cl.

B. Cl.

Bsn.

A. Saxes. 1 2

T. Sax.

Bar. Sax.

94

Tpts. 1 2 3

Hns. 1 2

Tbns.

Euph.

Tuba

Mlt. Perc. Chimes

Timp.

Perc. I

Perc. II

90 91 92 93 94 95 96

Picc.

Fls. 1 2

Ob.

Cls. 1 2 3

A. Cl.

B. Cl.

Bsn.

A. Saxes. 1 2

T. Sax.

Bar. Sax.

Tpts. 1 2 3

Hns. 1 2

Tbns. 1 2

Euph.

Tuba

Mlt. Perc.

Timp.

Perc. I

Perc. II

Chimes

97 98 99 100 101 102

105

Picc.

Fls. 1 2

Ob.

Cls. 1 2 3

A. Cl.

B. Cl.

Bsn. *p*

A. Saxes. 1 2

T. Sax.

Bar. Sax.

105

Tpts. 1 2 3

Hns. 1 2

Tbns. 1 2

Euph. *p*

Tuba *p*

Mlt. Perc.

Timp.

Perc. I

Perc. II

Picc.

Fls. 1

Fls. 2

Ob.

Cls. 1

Cls. 2

Cls. 3

A. Cl.

B. Cl.

Bsn.

A. Saxes. 1

A. Saxes. 2

T. Sax.

Bar. Sax.

Tpts. 1

Tpts. 2

Tpts. 3

Hns. 1

Hns. 2

Tbns. 1

Tbns. 2

Euph.

Tuba

Mlt. Perc. Mrb

Timp.

Perc. I

Perc. II

mp

p

mf

pp

rall.

Solo w/ Woodwinds

Picc.

Fls. 1 2

Ob.

Cls. 1 2 3

A. Cl.

B. Cl.

Bsn.

A. Saxes. 1 2

T. Sax.

Bar. Sax.

Tpts. 1 2 3

Hns. 1 2

Tbns. 1 2

Euph.

Tuba

Mlt. Perc.

Timp.

Perc. I

Perc. II

Cr. Cyms. ch

rit.

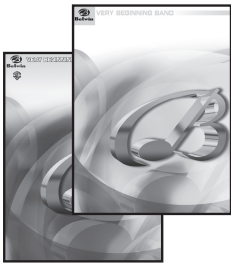
pp

ff

tutti

Preview Only
Legal Use Requires Purchase

CONCERT BAND SERIES GUIDELINES



VERY BEGINNING BAND SERIES

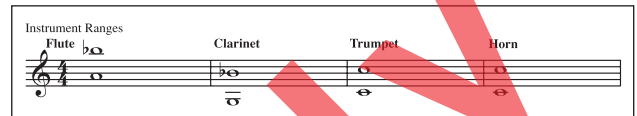
KEY SIGNATURES: B \flat , F

TIME SIGNATURES: 4/4

RHYTHM:

INSTRUMENTATION: Flute, Oboe, Clarinet, Bass Clarinet, Alto Saxophone, Tenor Saxophone, Baritone Saxophone, Trumpet, Horn, Trombone/Baritone/Bassoon, Tuba, Mallet Percussion & Percussion

SPECIAL CONSIDERATIONS: Utilizes only the first few notes presented in most beginning band methods; designed for both instruction and performance during the first year; solid scoring and extensive cross-cueing permits successful performance with incomplete or unbalanced instrumentation; limited percussion instrumentation constructed without rolls



BEGINNING BAND SERIES

KEY SIGNATURES: B \flat , E \flat , F

TIME SIGNATURES: 2/4, 3/4, 4/4

RHYTHM:

INSTRUMENTATION: Flute, Oboe, Clarinet, Bass Clarinet, Alto Saxophone, Tenor Saxophone, Baritone Saxophone, Trumpet, Horn, Trombone/Baritone/Bassoon, Tuba, Mallet Percussion & Percussion

SPECIAL CONSIDERATIONS: Awkward skips avoided; ample cross-cueing (especially solos); care taken to write "easy" low brass/low woodwind parts; percussion may be written a grade level above winds level



YOUNG BAND SERIES

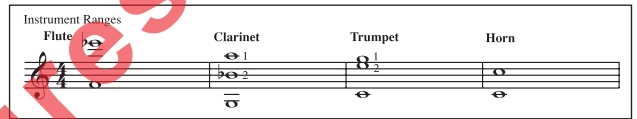
KEY SIGNATURES: B \flat , E \flat , F

TIME SIGNATURES: 2/4, 3/4, 4/4

RHYTHM:

INSTRUMENTATION: Flute, Oboe, 1st & 2nd Clarinet, Bass Clarinet, Bassoon, Alto Saxophone, Tenor Saxophone, Baritone Saxophone, 1st & 2nd Trumpet, Horn, Trombone, Baritone, Tuba, Mallet Percussion & Percussion — For popular music, Synthesizer & Drum Set parts are optional

SPECIAL CONSIDERATIONS: Awkward skips avoided; ample cross-cueing (especially solos); care taken to write "easy" low brass/low woodwind parts; percussion may be written a grade level above winds level



CONCERT BAND SERIES

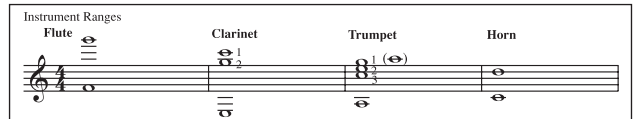
KEY SIGNATURES: B \flat , E \flat , F, A \flat , C

TIME SIGNATURES: 2/4, 3/4, 4/4, 6/8 and alla breve ("cut time")

RHYTHM: reasonable rhythms with no extended syncopation

INSTRUMENTATION: C Piccolo, 1st & 2nd Flute, Oboe, 1st, 2nd, & 3rd Clarinet, Alto Clarinet, Bass Clarinet, Bassoon, 1st & 2nd Alto Saxophone, Tenor Saxophone, Baritone Saxophone, 1st, 2nd, & 3rd Trumpet, 1st & 2nd Horn, Trombone, Baritone, Tuba, Mallet Percussion, Timpani & Percussion (expanded) — for popular music, Synthesizer, Drum Set & Electric Bass parts are optional

SPECIAL CONSIDERATIONS: Extensive cross-cueing (always on solos for Horn, Bassoon, & Oboe); composers are encouraged to use expanded percussion, particularly mallet and accessory instruments



SYMPHONIC BAND SERIES

KEY SIGNATURES: as necessary for musical content

TIME SIGNATURES: as necessary for musical content

RHYTHM: as necessary for musical content

INSTRUMENTATION: C Piccolo, 1st & 2nd Flute, 1st & 2nd Oboe, 1st, 2nd, & 3rd Clarinet, Alto Clarinet, Bass Clarinet, Contrabass Clarinet (opt.), 1st & 2nd Bassoon, 1st & 2nd Alto Saxophone, Tenor Saxophone, Baritone Saxophone, 1st, 2nd, & 3rd Trumpet, 1st, 2nd, 3rd & 4th Horn, 1st, 2nd, & 3rd Trombone, Baritone, Tuba, Mallet Percussion, Timpani & Percussion (expanded)

SPECIAL CONSIDERATIONS: as necessary for musical content

