

GO, TELL IT ON THE MOUNTAIN

for 2-part voices and piano

Arranged by
PATSY SIMMS
(ASCAP)

Traditional Spiritual

Medium Swing, ♩ = ca. 126 (♩♩ = $\overline{\text{♩}^3}$)

PIANO

mf

The piano introduction is in 4/4 time with a key signature of two flats (Bb, Eb). It features a melody in the right hand and a bass line in the left hand. The melody starts with a quarter rest followed by a quarter note G4, then eighth notes A4-Bb4-C5, and continues with a series of eighth and quarter notes. The bass line consists of a steady eighth-note accompaniment.

5 ALL VOICES

mf

Go, tell it on the moun - tain, o - ver the hills and ev - 'ry - where. _

The first vocal line is in 4/4 time. The melody is in the right hand, starting with a quarter note G4, followed by eighth notes A4-Bb4-C5, and then a quarter note D5. The piano accompaniment is in the left hand, providing a steady eighth-note accompaniment. The lyrics are: "Go, tell it on the moun - tain, o - ver the hills and ev - 'ry - where. _"

9

Go, tell it on the moun - tain that Je - sus Christ_ is

The second vocal line is in 4/4 time. The melody is in the right hand, starting with a quarter note G4, followed by eighth notes A4-Bb4-C5, and then a quarter note D5. The piano accompaniment is in the left hand, providing a steady eighth-note accompaniment. The lyrics are: "Go, tell it on the moun - tain that Je - sus Christ_ is"

13

PART I

born.

Go,

tell it on the moun - tain,

PART II

born.

Go,

tell

it,

tell it on the moun - tain,

15

o - ver the hills and ev - 'ry - where. — Go, tell it on the

o - ver the hills and ev - 'ry - where. Go, tell, tell it on the

18

moun - tain that Je - sus Christ is born.

moun - tain that Je - sus Christ is born.

22

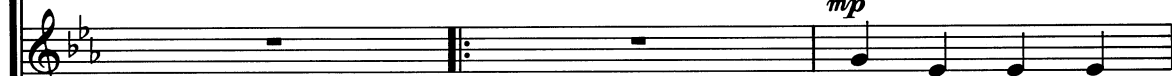
23

mp



The lit - tle Ba - by Je - sus was
shep - herds gath - ered 'round Him, this

mp

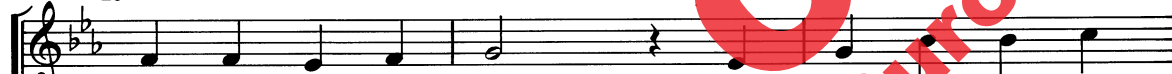


Lit - tle Babe was
Gath - ered 'round this

mp



25



born on Christ - mas Day. A bright star in the
Child up - on the hay. Three wise men brought Him



born on Christ - mas Day.
Child up - on the hay.

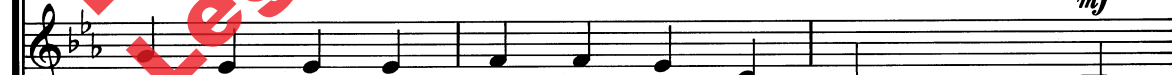


28



heav - ens gave light to show the way. _____
pres - ents that glo - rious Christ - mas Day. _____

mf



In the sky, gave light to show the way. Go,
Brought Him gifts that glo - rious Christ - mas Day.



31

mf

Go, tell it on the moun - tain, o - ver the hills and
 tell it, tell it on the moun - tain, o - ver the hills and

34

ev - 'ry - where. — Go, tell it on the moun - tain that
 ev - 'ry - where. Go, tell tell it on the moun - tain that

37

mp

Je - sus Christ is born. The
 Je - sus Christ is born.

1.

41 ^{2.} DESCANT 44 *f*

Go, and

cresc. *f*

born. Spread the news! Go tell it on the

cresc. *f*

born. Spread the news! Go, tell it.

cresc. *f*

45

tell it, o - ver the hills and ev - 'ry - where. _

moun - tain, o - ver the hills and ev - 'ry - where. _

tell it on the moun - tain, o - ver the hills and ev - 'ry - where. Go,

48

Go, and tell it, that Je - sus Christ is born, that
Go, tell it on the moun - tain that Je - sus Christ is born, that
tell, tell it on the moun - tain that Je - sus Christ is born, that

The musical score for measures 48-51 features three vocal staves and a piano accompaniment. The key signature is one flat (B-flat). The vocal parts are in a homophonic setting. The piano accompaniment provides harmonic support with chords and a steady bass line.

52

cresc. to end
Je - sus Christ is born. _____
cresc. to end
Je - sus Christ is born. _____
cresc. to end
Je - sus Christ is born. _____
cresc. to end

The musical score for measures 52-55 continues the vocal parts and piano accompaniment. It includes dynamic markings such as *cresc. to end* for the vocal lines. The piano accompaniment features a more active melodic line in the right hand and a steady bass line in the left hand.

Preview Only
Legal Use Requires Purchase



Alfred Publishing Co., Inc.
16320 Roscoe Blvd., Suite 100
P.O. Box 10003
Van Nuys, CA 91410-0003
alfred.com