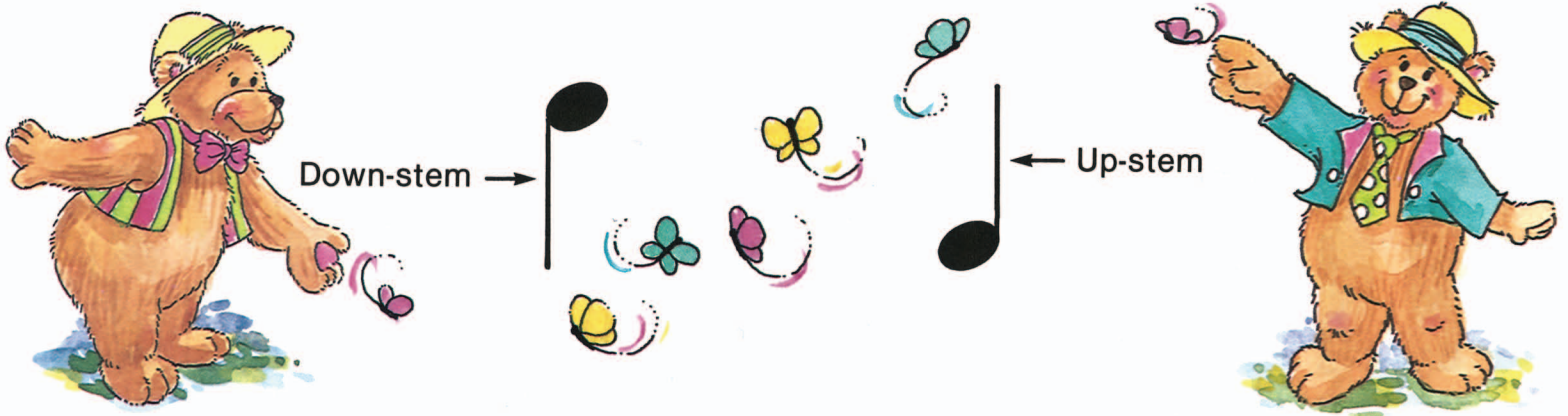


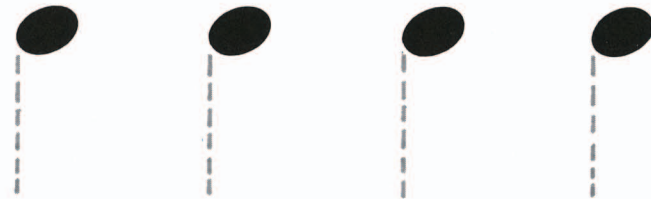
Crotchets or Quarter Notes

A CROTCHET is BLACK and has a STEM. STEMS may point DOWN or UP.



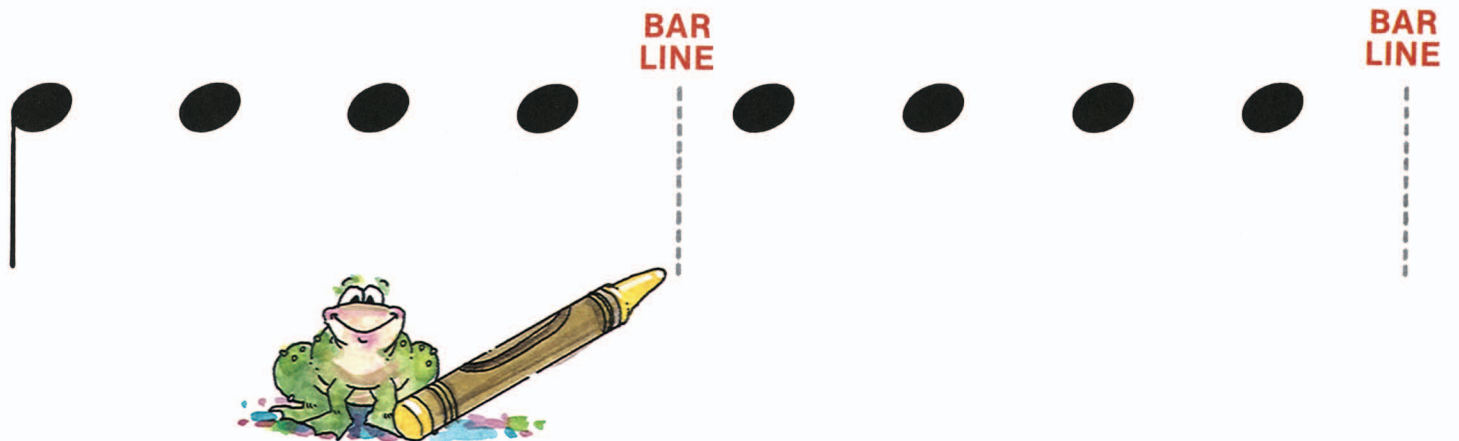
A DOWN-STEM goes on the LEFT side of a note.

1. Trace these DOWN-STEMS.



BAR-LINES divide the music into equal BARS.

2. Draw DOWN-STEMS on these notes, and trace the BAR LINES.



3. How many crotchets are there in each of the above bars? _____

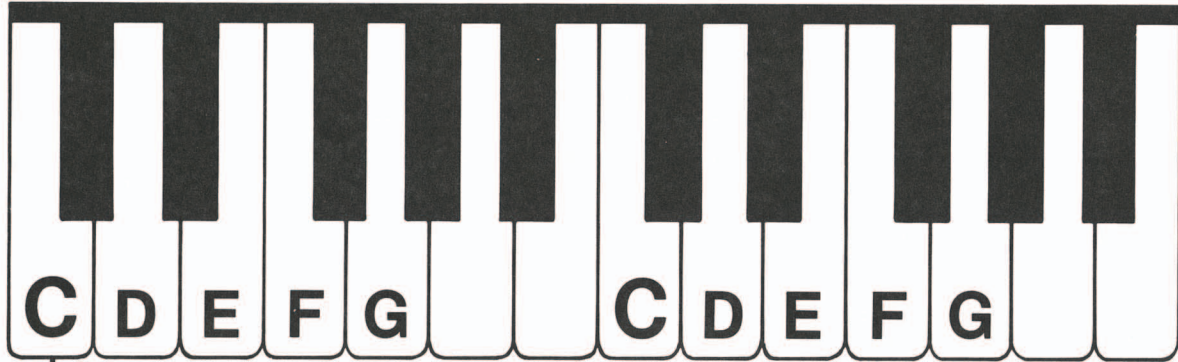
4. Clap (or tap) ONCE for each of the above notes, counting "ONE" for each note.

Playing in a New Position

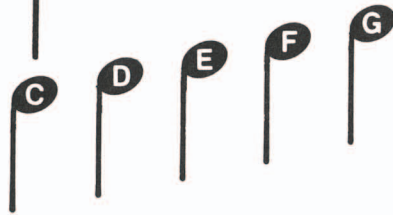
The position shown below, with each hand playing C D E F G, is called **C POSITION**.

1. Draw a line from each note, straight up to the key it indicates.
2. Add the correct LH finger numbers under the notes with **STEMS DOWN**.
3. Add the correct RH finger numbers above the notes with **STEMS UP**.

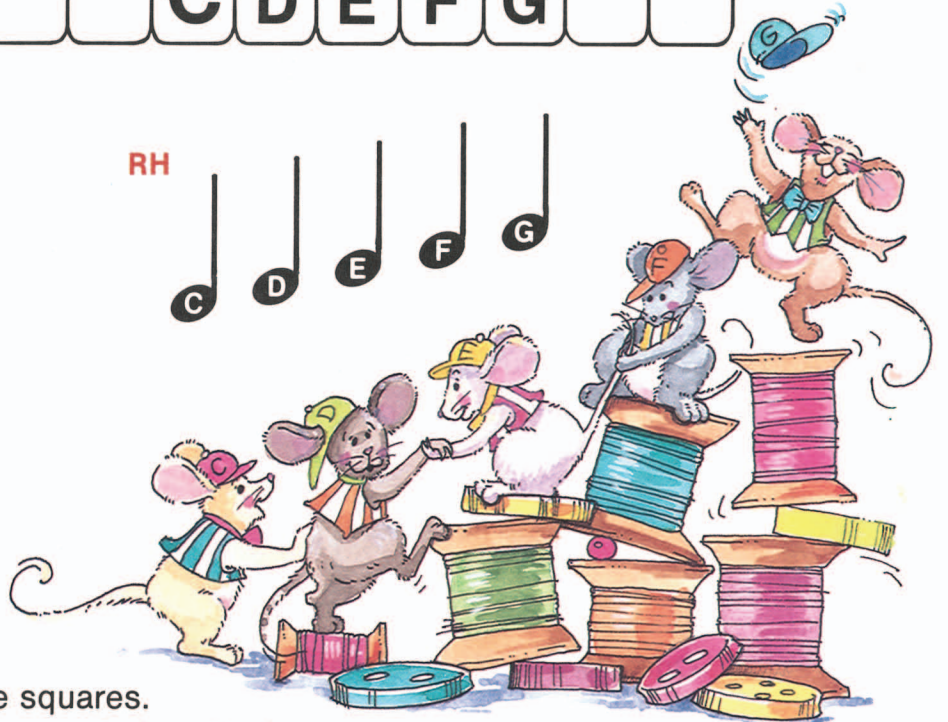
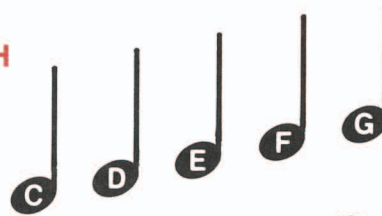
C POSITION



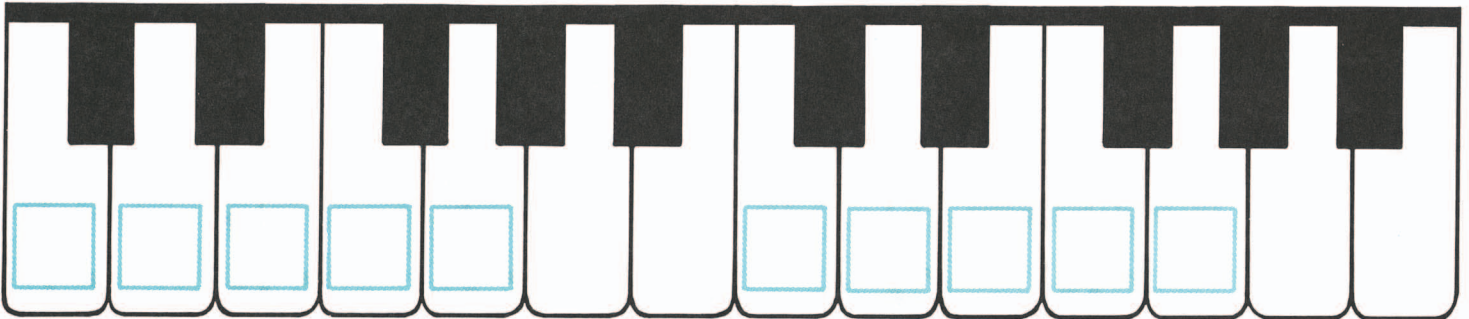
LH



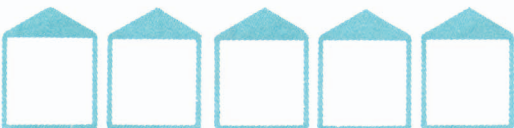
RH



4. Write the names of the keys in the squares.
5. Write the finger numbers in the squares below the keys.



LH



RH

