

THAT FIRST NOWELL

for two-part voices, accompanied,*
with optional flute**

Words by DON BESIG
and NANCY PRICE (ASCAP)

Music by
DON BESIG (ASCAP)

Flowing gently (♩ = ca. 100)

FLUTE (optional) *mp legato*

ACCOMP. *mp*

5

10 PART I *mp*

High in the heav-ens a star burn-ing bright

(tacet to m. 35)

*Also available for S.A.T.B. voices, No. 4269, S.A.B. voices, No. 4270, and Unison or 2-part voices, No. 20957.

**Flute part may be found on pages 11 and 12.

Copyright © MCMXCII by Alfred Publishing Co., Inc.

All rights reserved. Printed in USA.

15 (PART I)

19

brought the good news that first Christ-mas night. The an - gels were

PART II

20

sing - ing of peace and good will; they told of a Sav - ior, a

25

27

prom - ise ful - filled. In ex-cel - sis De - o! In ex-cel - sis

mf

In ex-cel - sis De - o! In ex-cel - sis

mf

30

De - o! Glo - ri - a, glo - ri - a De - o!

De - o! Glo - ri - a, glo - ri - a De - o!

35 (FLUTE)

mp

mp

40

44

DESCANT (opt.—a few voices)
mp

That first ____ *No -
*MELODY (unis. or most voices)
mf

That first ____ *No -

dim.

p

40

44

* Christmas, or Christmas joy.

45

well on a night long a - go was to cer - tain poor shep - herds on

well on a night long a - go was to cer - tain poor shep - herds on

45

50

hill - sides be - low. They were tend - ing their sheep in the cold win - ter

hill - sides be - low. They were tend - ing their sheep in the cold win - ter

50

55

PART I
f (equal divisi)

Musical staff for Part I, measures 55-59. The staff contains a melodic line in treble clef with a dynamic marking of *f* (equal divisi).

air when the song of the an - gels rang out - ev - 'ry - where: "No -

PART II
f (equal divisi)

Musical staff for Part II, measures 55-59. The staff contains a melodic line in treble clef with a dynamic marking of *f* (equal divisi).

air when the song of the an - gels rang out ev - 'ry - where: "No -

Musical staff for Part I, measures 60-64. The staff contains a melodic line in treble clef with a dynamic marking of *f* (equal divisi).

55

Piano accompaniment for measures 55-64, consisting of two staves (treble and bass clef). The music features chords and moving lines in both hands.

60

Musical staff for Part I, measures 60-64. The staff contains a melodic line in treble clef with a dynamic marking of *f* (equal divisi).

well! _____ No - well! No - well! _____ No - well! _____

Musical staff for Part II, measures 60-64. The staff contains a melodic line in treble clef with a dynamic marking of *f* (equal divisi).

well! _____ No - well! No - well! No - well!

Musical staff for Part I, measures 65-69. The staff contains a melodic line in treble clef with a dynamic marking of *f* (equal divisi).

60

Piano accompaniment for measures 65-69, consisting of two staves (treble and bass clef). The music features chords and moving lines in both hands.

64 68

Come and re - joice in the news that we tell!"

Come and re - joice in the news that we tell!"

64 68

69 72

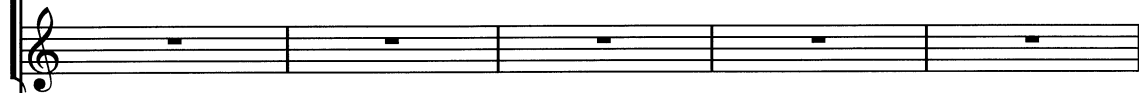
High in the heav - ens a

69 72

74



star burn-ing bright tells us a - gain it's Christ-mas to -



74

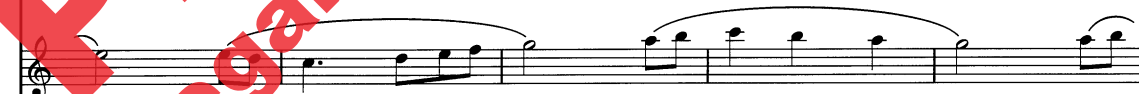
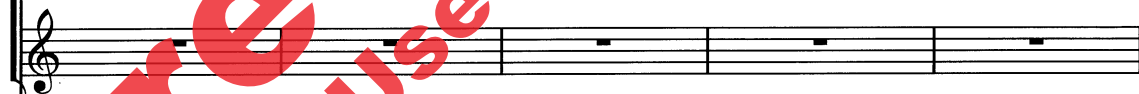


79

80



night! The an - gels are sing - ing of peace and good will; the



79

80



84

88

(mf)

prom - ise of Christ-mas will stay with us still.

In ex-cel - sis

mf

In ex-cel - sis

84

88

De - o!

In ex-cel - sis

De - o!

Glo - ri - a,

glo - ri - a

De - o!

In ex-cel - sis

De - o!

Glo - ri - a,

glo - ri - a

89

94 *f* 96 *cresc.*

De - o! No - well! _ No - well! No - well! _ No -

f *cresc.*

De - o! No - well! _ No - well! No - well! _ No -

f *cresc.*

94 *f* 96 *cresc.*

99 *ff* 101

well! _ Glo - ri - a in ex - cel - sis

ff

well! _ Glo - ri - a in ex - cel - sis

ff

99 *ff* 101

104 (no ritard)

De - o! _____

De - o! _____

(no ritard)

104 (no ritard)

That First Nowell is an anthem for Christmas Eve, Christmas Day and Christmastide that incorporates the beloved English carol, *The First Nowell*. It may be especially appropriate for a service of lessons and carols. Suggested corresponding scripture readings include Psalm 111, Isaiah 62: 1-11 and Luke 2: 1-20. One basic homiletical theme is praising the birth of the Redeemer King.

Don Besig is Director of Music at Perinton Presbyterian Church in Fairport, New York. He has over thirty years of experience teaching vocal music in the public schools of western New York. **Nancy Price** holds B.M. and M.M. degrees in music from Ithaca College. She began singing in elementary school choirs directed by Don Besig and in her senior year of college first worked with him as a lyricist. Since 1980 they have collaborated on over two hundred fifty compositions for school and church. Both Besig and Price have received several ASCAP Special awards.

That First Nowell

FLUTE

Music by DON BESIG

Flowing gently (♩ = ca. 100)

mp legato

7 11 15 19

27 8 35 *mp*

40 *dim.* *p* 44

46 52 *mp*

53

60 *f*

66 68 *mf*

72

78 80

84 88

90

96 *f* *cresc.* 101 *ff*

102 (no ritard)

Preview Only
Legal Use Requires Purchase