

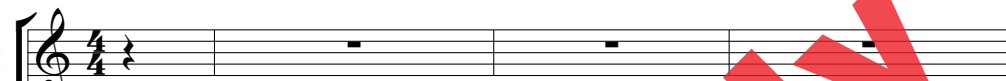
LIGHT A CANDLE

for S.S.A. voices and piano
with optional SoundTrax CD*

Words and Music by
ANDY BECK

Tenderly (♩ = ca. 100)

SOPRANO I
SOPRANO II



ALTO



Tenderly (♩ = ca. 100)

PIANO



4

* Also available for S.A.T.B. (37922), 3-part mixed/S.A.B. (37923), and 2-part (37924).
SoundTrax CD available (37925). VideoTrax DVD available (38176) - includes a fully-orchestrated
accompaniment recording with animated projections for use in performance. Visit alfred.com to view an excerpt.

Copyright © 2014 by Alfred Music
All Rights Reserved. Printed in USA.

To purchase a full-length performance recording of this piece, go to alfred.com/downloads

8

9

opt. SOLO p

Light a can - dle, _____ light a

11

can - dle _____ as we cel - e - brate the

14

opt. SOLO p

Light a
(end solo)

sto - ries of our past. _____

17

can - dle, _____ light a can - dle _____

20

_____ as a sym - bol of tra - di - tions that will

23

cresc. last. _____ *(end solo)* *mp* 25 For, with the can - dle

For, with the can - dle

26

glow, we cel - e - brate the sea - son. So

glow, — we cel - e - brate the sea - son. So

29

all the world will know the spe - cial

all the world will know the spe - cial

32

rea - son.

rea - son.

35 37 *mp*

Light a

mp

Light a can - dle,

8va *dp*

38

can - dle, light a can - dle to il -

light a can - dle to il -

41

lu - mi - nate a cold De - cem - ber night.

lu - mi - nate a cold De - cem - ber night.

44 45

Light a can - dle, light a

Light a can - dle,

47

can - dle to re - veal what we be -

light a can - dle to re - veal what we be -

50

lieve in can - dle - light. For,

lieve in can - dle - light. For,

cresc. *mf*

cresc. *mf*

cresc.

53

with the can - dle glow, we cel - e - brate the

with the can - dle glow, — we cel - e - brate the

mf

56

sea - son. So all the world will know the

sea - son. So all the world will know — the

59

spe - cial rea - son.

spe - cial rea - son.

63 65 *f*

Light a

f

Light a can - dle,

cresc. *8va* *f*

66

can - dle, light a can - dle, join-ing

light a can - dle, join-ing

69

yours with mine will make the light in - crease.

yours with mine will make the light in - crease.

72 73

Light a can - dle, _____ light a
 _____ Light a can - dle, _____

75

can - dle, _____ and our can - dle-light will
 _____ light a can - dle, _____ and our can - dle-light will

78 *decresc.*

be a sign of peace. _____
decresc.
 be a sign of peace. _____

decresc.

SPEAKER 1: Hanukkah Sameach.
(HAH-noo-kah sah-MAY-ach)

81

SPEAKER 2: Feliz Navidad.
(feh-LEES nah-vee-DAHD)

SPEAKER 3: Happy Kwanzaa.

SPEAKER 4: Merry Christmas.

84

86