

SO SET ITS SUN IN THEE

for S.S.A. voices and piano
with optional PianoTrax CD*

Words by
EMILY DICKINSON (1830-1886)

Music by
RUTH MORRIS GRAY

Expressively (♩ = ca. 100)

PIANO

The piano introduction is in 4/4 time, marked *mp*. The right hand plays a melody of eighth and quarter notes, while the left hand provides a simple harmonic accompaniment with dotted quarter notes.

4 *opt. SOLO (or unison)* *mp* 5

So set its sun in thee, what

Measures 4-6 of the vocal line. The piano accompaniment continues with a similar pattern to the introduction, supporting the vocal melody.

7

day is dark to me, what dis - tance far, so

Measures 7-9 of the vocal line. The piano accompaniment continues with a similar pattern to the introduction, supporting the vocal melody.

* Also available for S.A.T.B. (41634).
PianoTrax 6 Accompaniment CD available (40036).

Copyright © 2014 by Alfred Music
All Rights Reserved. Printed in USA.

To purchase a full-length performance recording of this piece, go to alfred.com/downloads

10

I the ships may see, _____ that

13

touch how sel - dom - ly, that touch how sel - dom -

16

ly, that touch how sel - dom - ly thy

poco rit.

19

shore?

a tempo (end solo)

a tempo *cresc.*

22 SOPRANO I 23 *mf*

So set its sun in thee, in

SOPRANO II *mf*

In thee, in thee, in

ALTO *mf*

So set its sun in thee, what day is dark to

26

thee, what dis - tance far, so I the ships may

thee, what dis - tance far, so I the ships may,

me, what dis - tance the ships may,

29

31

see, _____ that touch how sel - dom -

I the ships may see,

I the ships may see, that

decresc.

decresc.

32

ly, that touch how sel - dom - ly, that

decresc.

how sel - dom - ly, that

touch how sel - dom - ly, _____ that

35 *poco rit.* touch how sel - dom - ly? *a tempo p* Peace,

poco rit. touch sel - dom - ly. *a tempo mp* I man - y times thought

poco rit. touch sel - dom - ly? *a tempo p* thy shore?

poco rit. *a tempo mp*

38 peace, peace had come.

peace had come when peace was far a - way. *mp*

As

41

At the
Deem sight of land at the
wrecked men deem they sight the land at center of the

mf
cresc.
mf
cresc.
mf

44

center of the sea, the center of the sea, the center
center of the sea, the center of the sea, the center
sea, the center of the sea, the center of the, center

cresc.
cresc.
cresc.
f
f
f

47 *decresc. poco rit. a tempo*
 of the sea.

decresc. poco rit. mf a tempo
 of the sea. And strug - gle slack - er

decresc. poco rit. a tempo
 of the sea.

decresc. poco rit. mf a tempo

50 *mf*
 As hope - less - ly as I, how

but to prove as hope - less - ly as, hope-less-ly as I, as

mf
 As hope - less - ly as I.

53

decresc.

man - y fic - ti - tious shores be - fore the har - bor

decresc.

I. _____ The har - bor

decresc.

56

poco rit. *mp*

lie. So

poco rit. *mp*

lie. So

mp *poco rit.* *p* *mp*

The har - bor lie. So

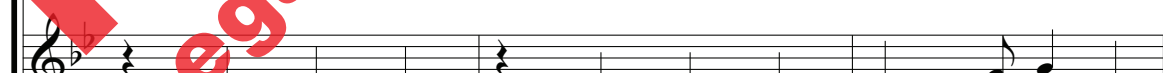
mp *poco rit.* *p*

59

a tempo*a tempo**a tempo*

a tempo
mp

63



66

67

decresc.

— that touch how sel - dom - ly, that

see,

decresc.

see,

that touch how sel - dom -

decresc.

69

touch how sel - dom - ly, that touch how sel - dom -

decresc.

how sel-dom - ly, that touch sel - dom -

ly, that touch sel - dom -