

From the musical *Catch Me If You Can***LIVE IN LIVING COLOR**for S.A.B. voices and piano  
with optional SoundTrax CD and SoundPax\*Arranged by  
**ERIC VAN CLEAVE**Music by **MARC SHAIMAN**  
Lyrics by **SCOTT WITTMAN**  
and **MARC SHAIMAN**

60s Rock shuffle (♩ = ca. 176) (♩♩ =  $\overset{\frown}{\text{♩}} \overset{\frown}{\text{♩}}$ )

SOLO *opt. SOLO mf*

PIANO *f*

60s Rock shuffle (♩ = ca. 176) (♩♩ =  $\overset{\frown}{\text{♩}} \overset{\frown}{\text{♩}}$ )

D G D<sup>7</sup> G D G D<sup>7</sup> G

5

got a sto - ry I'd like to tell.

G/D D<sup>7</sup> G/D D G/D

8

But I'm gon - na need help to tell it well.

D<sup>7</sup> G D G/D D<sup>7</sup> G/D D

\* Also available for S.A.T.B. (39982) and S.S.A. (39984).

SoundTrax CD available (39985). SoundPax available (39986) - includes score and set of parts for Alto Saxophone, Tenor Saxophone, Baritone Saxophone, 2 Trumpets, Trombone, Synthesizer, Guitar, Bass, Percussion, and Drumset.

© 2008-2011 WINDING BROOK WAY MUSIC and WALLI WOO ENTERTAINMENT

All Rights Administered by WB MUSIC CORP

This Arrangement © 2013 WINDING BROOK WAY MUSIC and WALLI WOO ENTERTAINMENT

All Rights Reserved. Printed in USA.

Sole Selling Agent for This Arrangement: Alfred Music Publishing Co., Inc.

To purchase a full-length performance recording of this piece, go to [alfred.com/downloads](http://alfred.com/downloads)

11 13

I \_\_\_\_\_ got a sto - ry 'bout fame -

G/D D<sup>7</sup> G D G C/G

*sim.*

14

\_\_\_\_\_ and mon - ey. And it's got -

G<sup>7</sup> C/G G C/G G<sup>7</sup> C/G G D

17

\_\_\_\_\_ more curves \_\_\_\_\_ than a Play boy bun - ny.

C/D D<sup>7</sup> G/D D G/D

20 21

I \_\_\_\_\_ wan-na live \_\_\_\_\_ not just \_\_\_\_\_ sur - vive, I wan-na

D<sup>7</sup> G G<sup>#</sup> A D/A A D/E A D/A D/E A

Musical staff for vocal line at measure 23, showing a melodic line in treble clef with a key signature of one sharp (F#).

tell my sto - ry live\_\_\_ and in liv - ing col - or.

SOPRANO

ALTO

BARITONE

*f*

Live in liv - ing col -

*f*

Piano accompaniment for measures 23-25, including vocal staves for Soprano, Alto, and Baritone, and piano staves for right and left hand. Includes dynamic marking *f* and chord symbols G, D, G.

Musical staff for vocal line at measure 26, showing a melodic line in treble clef with a key signature of one sharp (F#).

Some - thing spe - cial's up to - night. Yes, I'm live -

- or!

Live -

Piano accompaniment for measures 26-28, including vocal staves for Soprano, Alto, and Baritone, and piano staves for right and left hand. Includes dynamic marking *f* and chord symbols C7, G, D, G, D7, G, D.

29

— in liv - ing col - or, life \_\_\_ ain't lived \_\_\_ in black and white.

— in liv - ing col - or!

G D7 G D G

32

*opt. SOLO (or small group)***mf** 33

I \_\_\_ got a tale \_\_\_ of a great \_\_\_ ro - manc - er.

D<sup>13</sup> D<sup>13</sup> E<sup>b13</sup> E<sup>b</sup> A<sup>b</sup>/E<sup>b</sup> E<sup>b</sup>7 A<sup>b</sup>/E<sup>b</sup> E<sup>b</sup>

*mf*

35

And it's got \_\_\_ more moves \_\_\_ than a go -

A<sup>b</sup>/E<sup>b</sup> E<sup>b</sup>7 A<sup>b</sup>/E<sup>b</sup> E<sup>b</sup> A<sup>b</sup>/E<sup>b</sup>

- go danc - er. I

Eb7 Ab/Eb Eb Ab/Eb Eb7 Ab/Eb Eb Ab

got a sto - ry that's fast and slick.

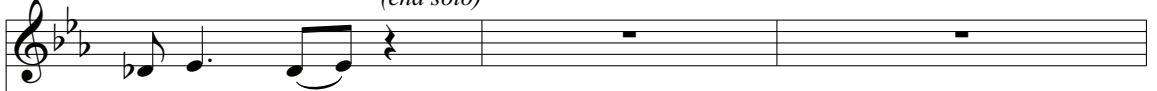
Db/Ab Ab Db/Ab Ab

And it's got more twists than a pep-

Db/Ab Ab7 Db Eb Ab/Eb

46

(end solo)



per-mint stick. —

SOPRANO

ALTO

BARITONE

*mf*

*I*

*mf*

Eb7 Ab/Eb Eb Ab/Eb Eb7 Ab/Eb Eb Bb



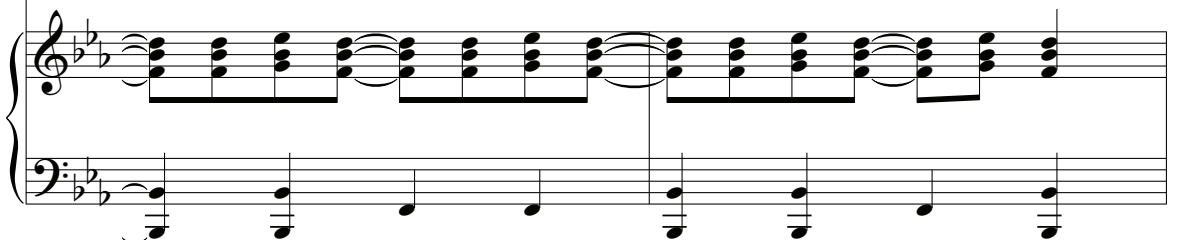
49



don't have the time — for the nine — to five, — I got - ta



Eb/Bb Bb/F Eb/F Bb Eb/Bb Bb Eb/F Bb



51

tell my sto - ry live\_\_\_ and in liv - ing col - or.

Live in liv ing col -

Ab Eb Ab

54

And\_\_\_ it's brought\_\_\_ to you by me\_\_\_ Yes,\_\_\_ it's live\_\_\_

- or!

Eb7 Ab Eb Ab Eb7 Ab

57

\_\_\_ in liv - ing col - or, this\_\_\_ won't fit\_\_\_ in your T. V.

Eb Eb Eb7 Ab Eb Ab

60 SOPRANO *mf* 61

What's\_\_ a name?\_\_ Just win-dow dress-

ALTO *mf*

Shoo bee doo wop bop bop

BARITONE *mf*

Shoo bee doo wop bop bop

*mf*

*E<sub>b</sub>* *G<sup>7</sup>*

63

- ing\_\_ Ev - 'ry - bod - y knows\_\_ it's clothes\_\_

shoo bee doo wop bop. Ev - 'ry - bod - y knows\_\_ it's clothes\_\_

shoo bee doo wop bop bop.

*A<sub>b</sub>* *F<sub>m</sub>*



66

— that make the man. — Play the game, —

— that make the man. —

Clothes — that make the man.

B $\flat$

69

— just keep them guess - ing. —

Shoo bee doo wop bop bop. shoo bee doo wop

Shoo bee doo wop bop bop. shoo bee doo wop

G $^7$  A $\flat$

72 SOPRANO  
ALTO  
BARITONE

Mix and match me, try to catch

F

74

me if you can! Oh! I

Eb Ab Eb

f

77

got a sto - ry that's strange but true!

Ab/Eb Eb7 Ab/Eb

So come fly with me for a bird's

Eb Ab Eb7 Ab/Eb Eb Ab

eye view. I've

Eb7 Ab/Eb Eb Ab Eb7

got the world at my com - mand.

Ab Db/Ab Ab7 Db/Ab Ab

87

And I'll be your one man Dis-

Db/Ab Ab7 Db/Ab Eb Ab/Eb

90

- ney Land. I

Eb7 Ab/Eb Eb Ab/Eb Eb7 Ab/Eb

93

don't want to wait for the cops to arrive, I got to

Bb Eb/Bb Bb/F Eb/F Bb Eb/Bb Bb/F Eb/F Bb

95

tell my sto - ry live — and in liv - ing... Live in liv - ing col -

Ab Eb Ab

98

- or. Tune me in — and turn me on. Yes, — I'm live —

Eb7 Ab Eb Ab Eb7 Ab

101

— in liv - ing col - or. Blink your eyes — and I'll — be gone. —

Ab Eb7 Ab Eb Ab

104

105

Yes, I'm live in liv - ing col - or. Tune me in

Eb7 Ab Eb Ab Eb7 Ab

107

and turn me on. Yes, I'm live in liv - ing col -

Eb Ab Eb7 Ab Eb Ab

110

- or blink your eyes, blink your eyes, and I'll be gone!

*cresc.* *ff*

Eb G11 C7(b9) A7 Gb7 F7 E7 Eb7

*cresc.* *ff*