

From the musical *Catch Me If You Can***LIVE IN LIVING COLOR**for S.A.T.B. voices and piano
with optional SoundTrax CD and SoundPax*Arranged by
ERIC VAN CLEAVEMusic by **MARC SHAIMAN**
Lyrics by **SCOTT WITTMAN**
and **MARC SHAIMAN**

60s Rock shuffle (♩ = ca. 176) (♩♩ = $\overset{\frown}{\text{♩}} \overset{\frown}{\text{♩}}$)

SOLO *opt. SOLO mf*

PIANO *f*

5

got a sto - ry I'd like to tell.

8

But I'm gon - na need help to tell it well.

Legal Use Requires Purchase

* Also available for S.A.B. (39983) and S.S.A. (39984).

SoundTrax CD available (39985). SoundPax available (39986) - includes score and set of parts for Alto Saxophone, Tenor Saxophone, Baritone Saxophone, 2 Trumpets, Trombone, Synthesizer, Guitar, Bass, Percussion, and Drumset.

© 2008-2011 WINDING BROOK WAY MUSIC and WALLI WOO ENTERTAINMENT

All Rights Administered by WB MUSIC CORP

This Arrangement © 2013 WINDING BROOK WAY MUSIC and WALLI WOO ENTERTAINMENT

All Rights Reserved. Printed in USA.

Sole Selling Agent for This Arrangement: Alfred Music Publishing Co., Inc.

To purchase a full-length performance recording of this piece, go to alfred.com/downloads

11 13

I _____ got a sto - ry 'bout fame -

G/D D⁷ G D G C/G

sim.

14

_____ and mon - ey. And it's got -

G⁷ C/G G C/G G⁷ C/G G D

17

_____ more curves _____ than a Play boy bun - ny.

C/D D⁷ G/D D G/D

20 21

I _____ wan-na live _____ not just _____ sur - vive, I wan-na

D⁷ G G# A D/A A D/E A D/A D/E A

Musical staff for vocal line at measure 23, showing a melodic line in G major with lyrics: "tell my sto - ry live___ and in liv - ing col - or."

tell my sto - ry live___ and in liv - ing col - or.

Vocal staves for Soprano, Alto, Tenor, and Bass. The Soprano part begins with a forte (*f*) dynamic and the lyrics "Live in liv - ing col -".

Live in liv - ing col -

Piano accompaniment for measures 23-25. Chords G, D, and G are indicated above the staff. The music features a steady bass line and a melodic line in the right hand.

Musical staff for vocal line at measure 26, showing a melodic line in G major with lyrics: "Some - thing spe - cial's up to - night. Yes, I'm live___"

Some - thing spe - cial's up to - night. Yes, I'm live___

Vocal staves for Soprano, Alto, Tenor, and Bass. The Soprano part continues with the lyrics "- or! Live___".

- or!

Live___

Piano accompaniment for measures 26-28. Chords C7, G, D, G, D7, G, and D are indicated above the staff. The music features a steady bass line and a melodic line in the right hand.

29

in liv - ing col - or, life ain't lived in black and white.

in liv - ing col - or!

G D7 G D G

32

opt. SOLO (or small group) *mf* 33

I got a tale of a great ro - manc - er.

D¹³ D¹³ E^{b13} E^b A^b/E^b E^b7 A^b/E^b E^b

mf

35

And it's got more moves than a go -

A^b/E^b E^b7 A^b/E^b E^b A^b/E^b

- go danc - er. I

Eb7 Ab/Eb Eb Ab/Eb Eb7 Ab/Eb Eb Ab

got a sto - ry that's fast and slick.

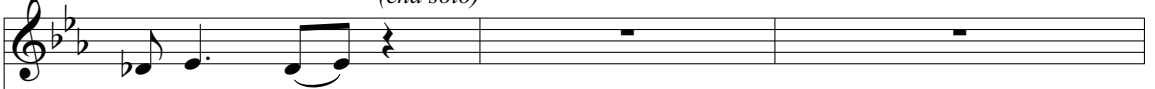
Db/Ab Ab Db/Ab Ab

And it's got more twists than a pep-

Db/Ab Ab7 Db Eb Ab/Eb

46

(end solo)



per-mint stick. —

SOPRANO

ALTO

TENOR

BASS

mf

I

mf

Eb7 Ab/Eb Eb Ab/Eb Eb7 Ab/Eb Eb Bb



49



don't have the time — for the nine — to five, — I got - ta



Eb/Bb Bb/F Eb/F Bb Eb/Bb Bb Eb/F Bb



51

tell my sto - ry live___ and in liv - ing col - or.

Live in liv ing col -

Ab Eb Ab

54

And___ it's brought___ to you by me___ Yes,___ it's live___

- or!

Eb7 Ab Eb Ab Eb7 Ab

57

___ in liv - ing col - or, this___ won't fit___ in your T. V.

Eb Eb Eb7 Ab Eb Ab

60 SOPRANO *mf* 61

What's _ a name? _ Just win-dow dress -

ALTO *mf*

Shoo bee doo wop bop bop

TENOR *mf*

BASS

Shoo bee doo wop bop bop

mf

E_b G⁷

63

- ing _ Ev - 'ry - bod - y knows _ it's clothes _

shoo bee doo wop bop. Ev - 'ry - bod - y knows _ it's clothes _

shoo bee doo wop bop bop.

A_b F_m

66

— that make the man. — Play the game, —

— that make the man. —

Clothes — that make the man.

B \flat

69

— just keep them guess - ing. —

Shoo bee doo wop bop bop shoo bee doo wop.

Shoo bee doo wop bop bop shoo bee doo wop.

G 7 A \flat

72

SOPRANO

ALTO

Mix and match me, try to catch

TENOR

BASS

F

74

me if you can! Oh! I

E \flat Ab E \flat

f

77

got a sto - ry that's strange but true!

Ab/E \flat E \flat 7 Ab/E \flat

So come fly with me for a bird's

Eb Ab Eb7 Ab/Eb Eb Ab

eye view. I've

Eb7 Ab/Eb Eb Ab Eb7

got the world at my com - mand.

Ab Db/Ab Ab7 Db/Ab Ab

87

And I'll be your one man Dis-

Db/Ab Ab7 Db/Ab Eb Ab/Eb

90

- ney Land. I

Eb7 Ab/Eb Eb Ab/Eb Eb7 Ab/Eb

93

don't want to wait for the cops to arrive, I got to

Bb Eb/Bb Bb/F Eb/F Bb Eb/Bb Bb/F Eb/F Bb

95

tell my sto - ry live — and in liv - ing... Live in liv - ing col -

Ab Eb Ab

98

- or. Tune — me in — and turn me on. Yes, — I'm live —

Eb7 Ab Eb Ab Eb7 Ab

101

— in liv - ing col - or. Blink — your eyes — and I'll — be gone. —

Ab Eb7 Ab Eb Ab

104

105

Yes, I'm live in liv - ing col - or. Tune me in

Eb7 Ab Eb Ab Eb7 Ab

107

and turn me on. Yes, I'm live in liv - ing col -

Eb Ab Eb7 Ab Eb Ab

110

- or blink your eyes, blink your eyes, and I'll be gone!

cresc. *ff*

Eb G11 C7(b9) A7 Gb7 F7 E7 Eb7

cresc. *ff*