

Contents

THE PARTS OF YOUR BANJO	2	<i>Red River Valley</i>	36
CHOOSING A BANJO	2	<i>Red River Valley (Solo)</i>	37
HOW TO HOLD YOUR BANJO	3	THE KEY OF D	38
SETTING UP YOUR BANJO	4	<i>Hard, Ain't It Hard</i>	38
HOW TO TUNE YOUR BANJO	5	<i>Hard, Ain't It Hard (Version 2)</i>	39
THE LEFT HAND	6	THE E MINOR CHORD	40
THE RIGHT HAND	7	<i>Red Apple Juice</i>	40
GETTING ACQUAINTED WITH TABLATURE	8	THE E MINOR CHORD WITH	
SOUND-OFF: HOW TO COUNT TIME	9	A HAMMER-ON	41
Quarter Notes and Eighth Notes	9	<i>Red Apple Juice (Version 2)</i>	41
Time Signatures	9	THE D CHORD	42
RIGHT-HAND PICKING	10	<i>Feelin' Lonesome</i>	42
Position of the Right Hand When Playing	10	THE ALTERNATE F CHORD	43
Different Ways to Pick the Strings with		<i>Little Maggie</i>	43
the Right Hand	10	LITTLE MAGGIE SOLO VARIATIONS	44
<i>Open-String Exercise</i>	11	<i>Chords and Chords</i>	46
<i>Open-String Sequence</i>	11	$\frac{3}{4}$ TIME	47
THE D7 CHORD	12	$\frac{3}{4}$ PINCH	47
CHANGING CHORDS	13	Playing the Strings Individually	48
<i>Chord Exercise</i>	13	Variations	48
<i>More Chord Exercises</i>	13	Introduction to "Down in the Valley"	48
<i>Train on the Island</i>	14	<i>Down in the Valley</i>	49
INTRODUCING THE PINCH	15	<i>Down in the Valley (Version 2)</i>	50
PINCH VARIATIONS	16	BACKUP PLAYING	51
THREE-FINGER PINCH	17	Alternate Chords	51
<i>Tom Dooley</i>	18	BACKUP PATTERNS	52
EARL SCRUGGS AND THE ROLL	19	Backup Pattern 1	52
THE FORWARD ROLL	19	Backup Pattern 2	52
Introducing the Accent	20	SLIDES	54
Rhythm	20	BENDING THE STRINGS	55
Right-Hand Position	20	C TUNING	56
<i>Tom Dooley (Version 2)</i>	21	<i>Careless Love</i>	56
FORWARD ROLL VARIATIONS	22	<i>Careless Love (Solo)</i>	57
Other Songs	22	APPENDIX	58
THE C CHORD	23	Chord Diagrams for Banjo in G Tuning	58
<i>The Roving Gambler</i>	24	Chord Diagrams for Banjo in C Tuning	59
THE BACKWARD ROLL	25	GETTING ACQUAINTED WITH MUSIC	60
<i>The Roving Gambler (Version 2)</i>	25	The Staff	60
THE FORWARD-BACKWARD ROLL		Measures	60
(THUMB LEADS)	26	Clefs	60
Introducing the Pickup	26	Naming the Notes	61
<i>Goin' Down the Road Feelin' Bad</i>	27	Rhythm	61
<i>Goin' Down the Road Feelin' Bad (Version 2)</i>	28	Flats ♭, Sharps ♯, and Naturals ♮	62
<i>Goin' Down the Road Feelin' Bad (Version 3)</i>	29	Key Signatures	62
The Hammer-On	30	ADDITIONAL INFORMATION ON	
Hammer-Ons with the C Chord	31	BANJO HEADS, STRINGS, BRIDGES,	
Hammer-Ons with the G Chord	32	AND FINGERPICKS	62
<i>Hawthorne Hammers</i>	33	Choice of Banjo Heads	63
THE CAPO	34	Strings, Bridges, and Fingerpicks	63
The F and G7 Chords	35	FINAL THOUGHTS	63
About Capo Notation	35	CERTIFICATE OF PROMOTION	64

Copyright © MMXIV by Alfred Music
All rights reserved. Printed in USA.



Alfred Music
P.O. Box 10003
Van Nuys, CA 91410-0003
alfred.com

Book	ISBN-10: 0-7390-8615-4	ISBN-13: 978-0-7390-8615-5
Book and CD	ISBN-10: 0-7390-8616-2	ISBN-13: 978-0-7390-8616-2
CD	ISBN-10: 0-7390-8617-0	ISBN-13: 978-0-7390-8617-9

No part of this book shall be reproduced, arranged, adapted, recorded, publicly performed, stored in a retrieval system, or transmitted by any means without written permission from the publisher. In order to comply with copyright laws, please apply for such written permission and/or license by contacting the publisher at alfred.com/permissions.

Front cover photos: Banjo courtesy of Gibson USA • Photo of Janet Robin by Kevin Estrada
Back cover photo models: Sheyna Gee (top), [Facebook.com/sheynageemusic](https://www.facebook.com/sheynageemusic) • Mark Burgess (middle left) • Dick Weissman (bottom)
Back cover photos: Top: Greg Pidgurny • Middle left: Larry Lytle

CD recorded by Dick Weissman.



Alfred Cares. Contents printed on environmentally responsible paper.

The Backward Roll



Track 18

Start with the 1st string, and work backward across the strings. The sequence is:

1. Middle finger picks up on 1st string
2. Thumb picks down on 5th string
3. Index finger picks up on 2nd string
4. Middle finger picks up on 1st string
5. Thumb picks down on 5th string
6. Index finger picks up on 2nd string
7. Middle finger picks up on 1st string
8. Thumb picks down on 5th string

THE ROVING GAMBLER (VERSION 2)

Below is the TAB for "The Roving Gambler" using the backward roll.

Moderately

Melody (Teacher)

G

I'm a roving gambler, I

Banjo

M T I M T I M T etc.

gam - ble all a - round; When - ev - er I meet with a

3

C G

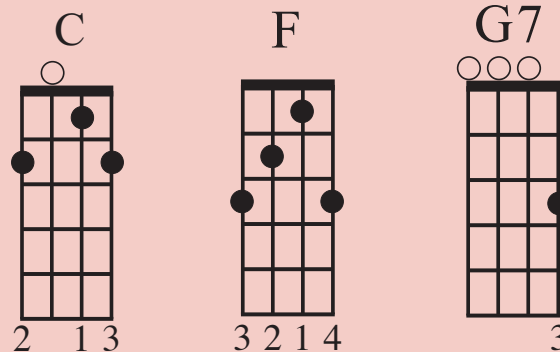
deck of cards I lay my mon - ey down.

6

The Key of D

To play in the key of D, keep your capo at the 2nd fret. You will be fingering in the key of C, but with the capo at the 2nd fret, you'll actually sound in D. Don't forget to tune your 5th string two frets higher to an A.

To the right are the three chords you'll need:



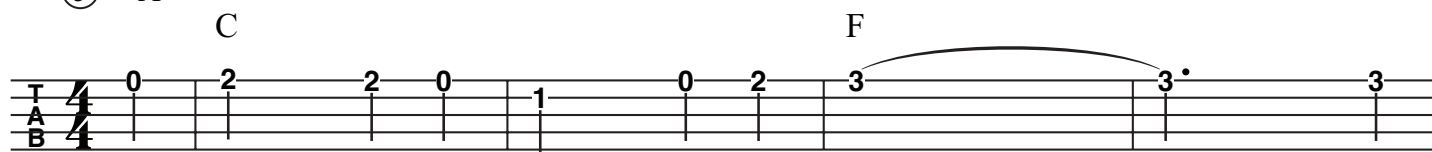
HARD, AIN'T IT HARD



Track 31

Capo II

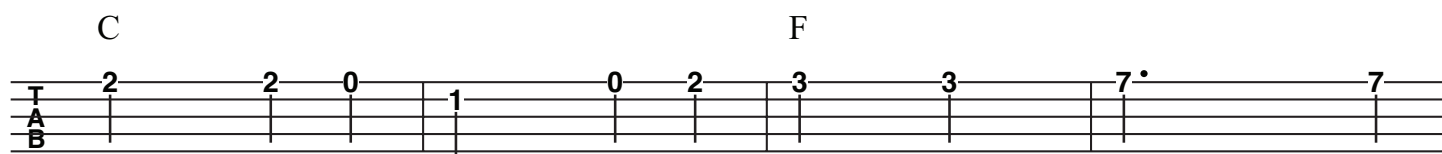
(5) = A



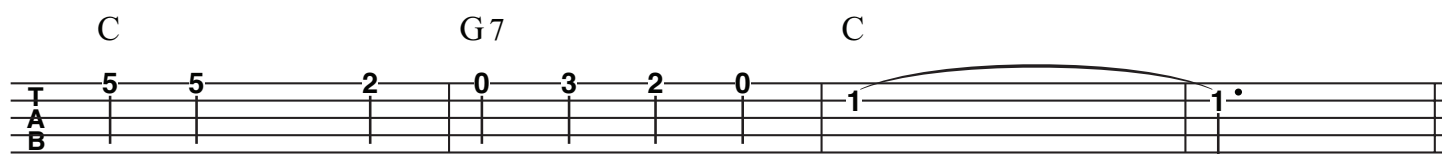
It's hard, and it's hard, ain't it hard _____ To



⁵ love one who nev - er will love you. _____ It's



⁹ hard, and it's hard, ain't it hard, O Lawd, To



¹³ love one who nev - er would be true. _____

Additional Lyrics

*There is a place in this old town,
That's where my true love lays around,
He takes other women, right down on his knee,
And he tells them a little tale he won't tell me.*

*Don't go to drinking and a gamblin',
Don't go there your sorrows to drown,
That hard liquor place is a lowdown disgrace,
It's the meanest old place in this town.*