

# LIGHT A CANDLE

for S.A.T.B. voices and piano  
with optional SoundTrax CD\*

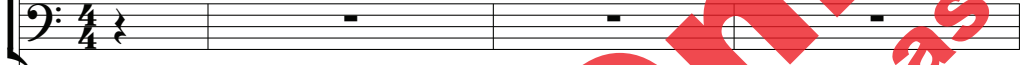
Words and Music by  
**ANDY BECK**

Tenderly (♩ = ca. 100)

SOPRANO  
ALTO



TENOR  
BASS



Tenderly (♩ = ca. 100)

PIANO

4

\* Also available for 3-part mixed/S.A.B. (37923) and 2-part (37924).  
SoundTrax CD available (37925). VideoTrax DVD available (38176) - featuring a fully-orchestrated  
accompaniment recording with animated projections for use in performance. Visit [alfred.com](http://alfred.com) to view an excerpt.

Copyright © 2012 by Alfred Music Publishing Co., Inc.  
All Rights Reserved. Printed in USA.

To purchase a full-length performance recording of this piece, go to [alfred.com/downloads](http://alfred.com/downloads)

8 *(opt. solo) p* 9

Light a can - dle, \_\_\_\_\_ light a

11

can - dle \_\_\_\_\_ as we cel - e - brate the

14 *(end solo)*

sto - ries of our past. \_\_\_\_\_

*(opt. solo) p*

Light a

Preview Only  
Legal use requires purchase

17

can - dle, \_\_\_\_\_ light a can - dle \_\_\_\_\_

20

\_\_\_\_\_ as a sym - bol of tra - di - tions that will

23

*cresc.* \_\_\_\_\_ *(end solo)* *mp* For, with the can - dle

last. \_\_\_\_\_ *cresc.* *mp*

Preview Only  
Legal Use Requires Purchase

26

glow, — we cel - e - brate the sea - son. So

29

all the world will know — the spe - cial

32

rea son.

35 *mp* 37

Light a can - dle,

*mp*

Light a

*8va* *dp*

38

light a can - dle to il -

can - dle, light a can - dle

41

lu - mi - nate a cold De - cem - ber night.

44

45

Light a can - dle, \_\_\_\_\_

Light a can - dle, \_\_\_\_\_ light a

47

light a can - dle to re - veal what we be -

can - dle \_\_\_\_\_

50

lieve in can - dle - light. *cresc.* *mf*

For, *cresc.* *mf*

53

with the can - dle glow, we cel - e - brate the

*mf*

56

sea - son. So all the world will know the

59

spe - cial rea - son.

63 SOPRANO

65

Light a

ALTO

Light a can - dle,

TENOR

Light a

BASS

Light a can dle,

*cresc.*

*f*

*8va*

66

can - dle, light a can - dle, join - ing

light a can - dle, join - ing

can - dle, light a can - dle, join - ing

light a can - dle, join - ing



yours with mine will make the light in - crease.

yours with mine will make the light in - crease.

yours with mine will make the light in - crease.

yours with mine will make the light in - crease.

Light a can - dle, light a

Light a can - dle,

Light a can - dle, light a

Light a can - dle,

75

can - dle, \_\_\_\_\_ and our can - dle-light will

\_\_\_\_\_ light a can - dle, \_\_\_\_\_ and our can - dle-light will

can - dle, \_\_\_\_\_ and our can - dle-light will

\_\_\_\_\_ light a can - dle, \_\_\_\_\_ and our can - dle-light will

*decresc.*

be a sign of peace.

*decresc.*

be a sign of peace.

*decresc.*

be a sign of peace.

*decresc.*

be a sign of peace.

*decresc.*

78

*decresc.*

be a sign of peace.

*decresc.*

be a sign of peace.

*decresc.*

be a sign of peace.

*decresc.*

be a sign of peace.

*decresc.*

SPEAKER 1: Hanukkah Sameach.  
(HAH-noo-kah sah-MAY-ach)

81 SOPRANO

ALTO

TENOR

BASS

Musical notation for Speaker 1, measures 81-83. Includes vocal staves for Soprano, Alto, Tenor, and Bass, and piano accompaniment. A piano (*p*) dynamic marking is present.

84 SPEAKER 2: Feliz Navidad.  
(feh-LEES nah-vee-DAHD)

SPEAKER 3: Happy Kwanzaa.

SPEAKER 4: Merry Christmas.

*rit.*

Musical notation for Speakers 2, 3, and 4, measures 84-85. Includes vocal staves for Soprano, Alto, Tenor, and Bass, and piano accompaniment. A ritardando (*rit.*) dynamic marking is present.

86

*p*  
A sign of peace.

Musical notation for Speaker 1, measures 86-88. Includes vocal staves for Soprano, Alto, Tenor, and Bass, and piano accompaniment. A piano (*p*) dynamic marking is present.