

SING JOYFUL ALLELUIAS

for S.A.T.B. and keyboard

Based on Psalm 33

Words and Music by
JOSEPH BARLOWE

Brightly; In 2 (♩ = ca. 60)

KEYBOARD

4 SOPRANO/ALTO 5 *f*

Sing with joy to the Lord; Give

TENOR/BASS *f*

7

praise with the trumpet and harp! Sing with joy a new

Copyright © 2011 by Alfred Music Publishing Co., Inc.
All Rights Reserved. Printed in USA.

THE CCLI LICENSE DOES NOT GRANT PERMISSION TO PHOTOCOPY THIS MUSIC.

10

song and play skill - ful - ly an - thems of praise! _____

13 *mf* 14 *legato*

For the Word of the Lord is righteous and His

mf

Al - le - lu - ia,

mf

16

work is per - fect - ed in faith - ful - ness. — The earth is full of the

Al - le - lu - ia. _____

Preview Only
Legal Use Requires Purchase

19

good - ness; _____ The earth is full of the great - ness _____ of the

22

cresc.

Lord! Al - le - lu - ia! Al - le - lu - ia! _____

cresc.

25

26

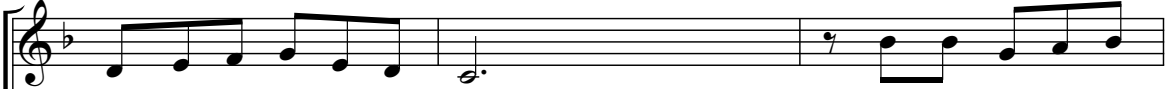
f

Sing with joy to the Lord; Give

Sing with joy to the

f

28



praise with the trum-pet and harp!

Sing with joy a new



Lord;

Sing with joy a new song.



31



song and play skill - ful-ly an-thems of praise!



34

35

ff



Sing with joy to the Lord;

Give

ff



ff

PREVIEW ONLY
Legal Use Requires Purchase

praise with the trum - pet and harp! Sing with joy a new

song and play skill - ful - ly an - thems of

praise! Al - le - lu

44

ia! Al - le - lu -

This system contains measures 44 and 45. It features a vocal line with lyrics and a piano accompaniment. The key signature has one sharp (F#). The vocal line starts with a quarter rest followed by a quarter note 'ia!', then a half note 'Al' and a half note 'le', and finally a half note 'lu' with a fermata. The piano accompaniment consists of chords in the right hand and a bass line in the left hand.

This system shows the piano accompaniment for measures 44 and 45. The right hand plays chords, and the left hand plays a bass line with some ties.

46

ia! Al - le - lu - ia! Al - le -

This system contains measures 46 and 47. The vocal line continues with lyrics. Measure 46 has a quarter rest, a quarter note 'ia!', a half note 'Al', a half note 'le', and a half note 'lu' with a fermata. Measure 47 starts with a quarter rest, a quarter note 'ia!', a half note 'Al', and a half note 'le'. The piano accompaniment continues with chords and a bass line.

This system shows the piano accompaniment for measures 46 and 47. The right hand plays chords, and the left hand plays a bass line.

49

lu - ia!

This system contains measures 48 and 49. Measure 48 has a half note 'lu' with a fermata. Measure 49 has a half note 'ia!' with a fermata. The piano accompaniment features sustained chords in the right hand and a bass line in the left hand.

This system shows the piano accompaniment for measures 48 and 49. The right hand plays chords, and the left hand plays a bass line.

Preview Only
Legal Use Requires Purchase