

for the 75th anniversary of St. Philip's in the Hills Parish, Tucson, Arizona

# GOD IS HERE

(Hymn tune: *St. Philip's*)

for S.A.T.B. and keyboard  
with optional instruments and InstruTrax CD\*

FRED PRATT GREEN

SHELDON CURRY

Freely, no strict tempo

KEYBOARD

*pp*

1

5

*rit.*

*ten.*

2

*p flowing, sempre legato*  
*a tempo*

*rit.*

Mysterious, awe-filled (♩ = ca. 76)

8

SOLO (or Women)  
*mp*

God is here! As we your peo - ple meet to of - fer

\* Parts for flute, oboe, clarinet, horn, 3 trumpets, 3 trombones, tuba, percussion, organ, 2 violins, viola, cello, string bass, substitute parts (2 alto sax, tenor sax/TC baritone, clarinet 3, bass clarinet, and string reduction) and director's score, No. 36827; or a smaller chamber group for 2 trumpets, 2 trombones, organ, percussion and director's score, No. 36826 and split track/accompaniment/full performance compact disc, No. 36828, are available separately.

## GOD IS HERE!

Words by FRED PRATT GREEN  
Music by SHELDON CURRY

Text: © 1979 HOPE PUBLISHING COMPANY, Carol Stream, IL 60188  
Music and Choral Setting © 2010 ALFRED MUSIC PUBLISHING CO., INC.  
and HOPE PUBLISHING COMPANY, Carol Stream, IL 60188

Exclusive Distributor for This Arrangement: ALFRED MUSIC PUBLISHING CO., INC.  
All Rights Reserved including Public Performance Used by Permission

THE CCLI LICENSE DOES NOT GRANT PERMISSION TO PHOTOCOPY THIS MUSIC.

11

praise and prayer, may we find in full - er meas - ure

14

16 ALL WOMEN

what it is in Christ we share. Here, as in the

*mf*

17

world a - round us, all our var - ied skills and arts

*mf*

20

wait the com - ing of your Spir - it in - to o - pen

23

minds and hearts

*rit.* *a tempo*

*8va* *loco*

*rit.* *(play only if necessary)* *a tempo*

26

3

*legato*

29

S. A. *mp*

Musical staff for Soprano and Alto (S. A.) with lyrics: Here are sym - bols to re - mind us of our life - long

T. B. *mp*

Musical staff for Tenor and Bass (T. B.) with lyrics: Here are sym - bols to re - mind us of our life - long

Piano accompaniment for measures 29-31, marked *mp*

32

Musical staff for Soprano and Alto (S. A.) with lyrics: need of grace; here are ta - ble, font and pul - pit;

Musical staff for Tenor and Bass (T. B.) with lyrics: need of grace; here are ta - ble, font and pul - pit;

Piano accompaniment for measures 32-36

37

Musical staff for Soprano and Alto (S. A.) with lyrics: here the Cross has cen - tral place. Here in hon - es -

Musical staff for Tenor and Bass (T. B.) with lyrics: here the Cross has cen - tral place. Here in hon - es -

Piano accompaniment for measures 37-40, marked *mf*



38

ty of preach - ing, here in si - lence, as in speech,

41

here in new - ness and re - new - al, God the Spir - it

44

comes to each.

Preview Only  
Legal Use Requires Purchase



47

50 *mp*

Here can chil - dren find a wel - come in the Shep - herd's

53

flock and fold.

*mf*

Here, as bread and wine are tak - en,

*mf*

Legal use requires purchase

Preview Only

56

*mf*

Here the ser - vants

Christ sus-tains us as of old. Here the ser - vants

59

of the Ser - vant seek in wor - ship

of the Ser - vant

61

to ex - plore what it means in

63

dai - ly liv - ing to be - lieve and

This system contains two staves. The top staff is a vocal line with lyrics. The bottom staff is a piano accompaniment. The key signature has two sharps (F# and C#). The music consists of quarter and eighth notes.

This system continues the piano accompaniment from the previous system, featuring eighth and quarter notes in both staves.

65

to a - dore.

*f* 5

This system contains two staves. The top staff is a vocal line with lyrics. The bottom staff is a piano accompaniment. A dynamic marking of *f* (forte) is present. A circled number 5 is written above the staff.

This system continues the piano accompaniment, featuring a more active eighth-note melody in the right hand and a bass line in the left hand.

67

This system contains two staves that are mostly empty, with only a few notes and rests visible, indicating a transition or a specific musical instruction.

This system contains two staves with piano accompaniment, featuring a continuous eighth-note pattern in the right hand and a bass line in the left hand.

Preview Only  
Legal Use Requires Purchase



69 Congregation *rit.* 70 Majestic, with fire (♩ = ca. 70)

DESCANT *rit. ff* Lord of all, of church and king - dom

Lord of all, of church and king - dom

Lord of all, of church and king - dom,

Majestic, with fire (♩ = ca. 70)

72

in an age of change and doubt, keep us faith - ful

in an age of change and doubt, keep us faith - ful

in an age of change and doubt, keep us faith - ful

75

to the gos - pel, help us work Your pur - pose out.

to the gos - pel, help us work Your pur - pose out.

to the gos - pel, help us work Your pur - pose out.

78

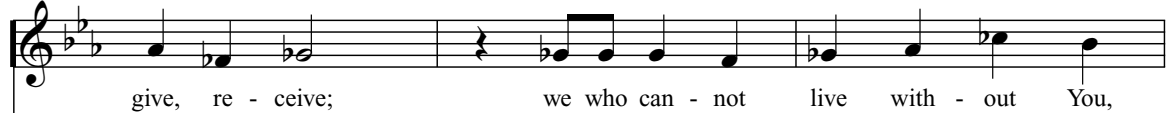
Here in this day's cel - e - bra - tion, all we have to

Here in this day's cel - e - bra - tion, all we have to

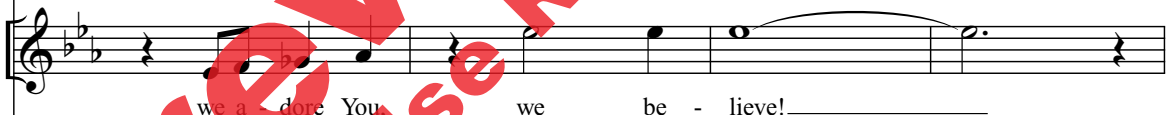
Here in this day's cel - e - bra - tion, all we have to

Legal Use Requires Purchase

81



84



6  
v

88

God is here! God is

91

here! God is

93

here!

The image shows a musical score for voice and piano, spanning measures 88 to 93. The score is written in a key signature of two flats (B-flat and E-flat) and a common time signature. The vocal line consists of two staves (treble and bass clef) with lyrics underneath. The piano accompaniment is written in two staves (treble and bass clef). The lyrics are: "God is here! God is here! God is here!". The score includes various musical notations such as notes, rests, and dynamic markings. A large red watermark "Preview Only" is overlaid diagonally across the page.

Congregation

**GOD IS HERE**

FRED PRATT GREEN

SHELDON CURRY

Majestic, with fire (♩ = ca. 70)

Lord of all, of church and king - dom in an age of  
 change and doubt, keep us faith - ful to the gos - pel  
 help us work Your pur - pose out. Here in this day's  
 cel - e - bra - tion, all we have to  
 give, re - ceive: we who can - not live with - out You,  
 we a - dore You; we be - lieve!

**GOD IS HERE!**

Words by FRED PRATT GREEN

Music by SHELDON CURRY

Text: © 1979 HOPE PUBLISHING COMPANY, Carol Stream, IL 60188

Music and Choral Setting © 2010 ALFRED MUSIC PUBLISHING CO., INC.

and HOPE PUBLISHING COMPANY, Carol Stream, IL 60188

Exclusive Distributor for This Arrangement: ALFRED MUSIC PUBLISHING CO., INC.

All Rights Reserved including Public Performance

Used by Permission