

from *Yentl***PAPA, CAN YOU HEAR ME?**for S.A.T.B. voices and piano
with optional SoundTrax CD*Arranged by
LISA DeSPAINLyrics by
ALAN and MARILYN BERGMAN
Music by
MICHEL LEGRAND

Freely *mp* *Spoken solo:*
Our Heavenly Father,

SOPRANO
ALTO

TENOR
BASS

mp

God. On

Freely
Dm *mp*

PIANO

4 *and my father who*
is also in heaven.

God.

Gm

* Also available for S.A.B. (35833) and S.S.A. (35834).
SoundTrax CD available (35835).© 1983 EMANUEL MUSIC, THREESOME MUSIC, and ENNIS PRODUCTIONS, LTD.
All Rights Controlled and Administered by EMI APRIL MUSIC, INC. (Publishing)
and ALFRED MUSIC PUBLISHING CO., INC. (Print)This Arrangement © 2011 EMANUEL MUSIC, THREESOME MUSIC, and ENNIS PRODUCTIONS, LTD.
All Rights Reserved. Printed in USA.Sole Selling Agent for This Arrangement: Alfred Music Publishing Co., Inc.
To purchase a full-length performance recording of this piece, go to alfred.com/downloads

6

May the light

(Spoken solo continues)
of this flickering candle

oo, il -

Dm

Dm/C

Bbmaj7

p

8

with more motion

lu - mi - nate the night the way your spir - it il lu - mi - nates my

oo.

Dm

Em7/D

Dm

Em/D

with more motion

10

soul.

rit.

Dm/C

Bbmaj7

Am7

Dm

rit.

12 Rubato, with more motion

Pa - pa, can you hear me? Pa - pa, can you see me? Pa - pa, can you find me

Rubato, with more motion *mp* Dm/C Bbmaj7

Can you find me

15 *rit.* *a tempo, rubato*

in the night? Pa - pa, are you near me?

in the night? Oo, Dm

rit. *a tempo, rubato*

17

Pa - pa, can you hear me? Pa - pa, can you help me

oo, ah, help me

Dm/C Bm7(b5)

19 *rit.* 20 *with more motion*

not be fright - ened? Look - ing at the skies I seem to

E7/sus E7 Am Bm/A

rit. *with more motion*

21

see a mil - lion eyes, which ones are yours?

Am Bm/A Am Am/G

23 *cresc.*

Where are you now that yes - ter -

Fmaj7 E7 Am Bm/A

cresc.

25

day has waved good - bye and closed its doors? The

mf

Am⁷ G⁷ Cmaj⁷ C⁷(b⁵)/G^b

27

night is so much dark - er. The wind is so much cold - er. The

Fmaj⁷ B⁷ Emaj⁷ B^{b7}

mf

29

world I see is so much big - ger now that I'm a - lone!

rit. e decresc.

decresc.

Ebmaj⁷ Em⁷(b⁵)A A⁷

rit. e decresc.

31 SOLO

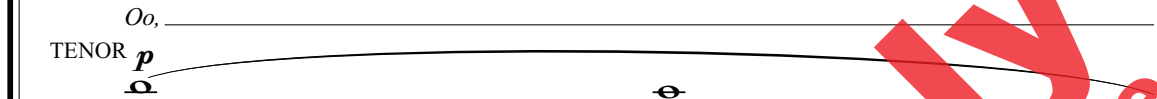
mp

Pa - pa, please for - give me. Try to un - der - stand me.

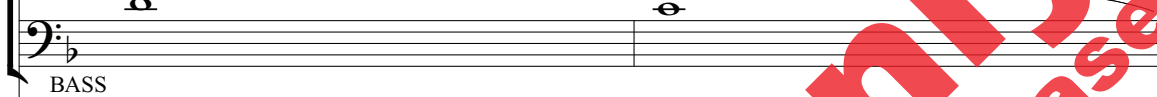
SOPRANO

p

ALTO

pp

TENOR

p

BASS

Dm

Dm/C



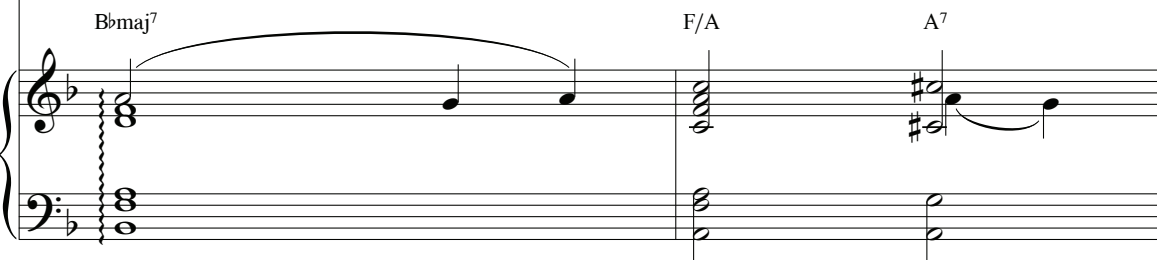
33



Pa - pa, don't you know I had no choice?



I had no choice? _____



Can you hear me pray - ing, an - y - thing I'm say - ing,

Oo, _____

Dm Dm/C

e - ven though the night is filled with voic - es?

rit.
is filled with voic - es?

Bm7(b5) E7sus E7
rit.

39

with more motion

I re - mem - ber ev - 'ry - thing you taught me ev - 'ry book I've ev - er

Am

Bm/A

Am⁷

Bmin/A

with more motion

41

read.

Am

Am/G

Fmaj7

Bm⁷/E

43

mp cresc.

Can all the words in all the books help me to face what lies a -

mp cresc.

Am

Bm/A

Am⁷G⁷

mp cresc.

45 *mf*

head? The trees are so much tall - er, and

mf

Cmaj7 C7(b5)/Gb Fmaj7 B7

47

I feel so much small - er. The moon is twice as lone - ly and the

Emaj7 Bb7 Ebmaj

49 *rit. e decresc.* *p*

stars are half as bright. Pa - pa, how I love you.

decresc. *p*

Em7(b5)/A A7sus Dm

rit. e decresc. *p*

Slowly, with molto rubato

51

rit.

Pa - pa, how I need you. Pa - pa, how I miss you kiss - ing me good -

This system contains the first two measures of the piece. The vocal line is in the treble clef with a key signature of one flat. The piano accompaniment is in the bass clef. The tempo marking *rit.* is placed above the second measure. The lyrics are: "Pa - pa, how I need you. Pa - pa, how I miss you kiss - ing me good -".

Dm/C Bbmaj7 Am/E A7

This system shows the piano accompaniment for the first two measures. The left hand plays a steady bass line, and the right hand plays chords and moving lines. Chord symbols are placed above the staff: Dm/C, Bbmaj7, Am/E, and A7.

54

a tempo

night.

This system contains the third and fourth measures. The vocal line has a long note for "night." The piano accompaniment continues. The tempo marking *a tempo* is placed above the first measure.

Dm Dm/C Bbmaj7 Am7 Dm

p a tempo

This system shows the piano accompaniment for the third and fourth measures. The left hand plays a steady bass line, and the right hand plays chords and moving lines. Chord symbols are placed above the staff: Dm, Dm/C, Bbmaj7, Am7, and Dm. The dynamic marking *p a tempo* is placed below the first measure.

PREVIEW ONLY
 Legal Use Requires Purchase