

Commissioned in honor of Carolyn Harris
in appreciation of her 25 years of cheerful service as accompanist
Mount Sylvan United Methodist Church, Durham, NC

THIS WON'T GET ME DOWN

for S.A.T.B. and keyboard with optional
InstruTrax CD and instrumental parts*

Words and music by
PEPPER CHOPLIN

1

With a gospel swing (♩ = 46)

SOPRANO ALTO

TENOR BASS

Keyboard

f

f

A/E D/E A A G/B A/C#

3 3 3

3

down. O no, this won't get me

D D/F# E D maj7 E A/E D/E E

* Parts for drumset, keyboard/guitar, bass guitar, a director's score (No. 32316), and a split track/accompaniment/full performance compact disc (No. 32317) are available separately.

Copyright © 2009 by Alfred Publishing Co., Inc.
All Rights Reserved. Printed in USA.

THE CCLI LICENSE DOES NOT GRANT PERMISSION TO PHOTOCOPY THIS MUSIC.

5 down. _____

(accented)
down, this won't get me down.

A D A/C# Bm7 A

7 *smooth and soulful*
mf

Some - times my trou - bles, they get so hea - vy, so hard to

A2 A Em7(4) A7 Dmaj7

10

car - ry, but I car - ry on. *mf*

Though all my strug - gles, they won't de -

Bm9 Dmaj7/E A2 A Em7(4) A7

13

No, I'm gon - na be strong. I know per -

feat me. No, I'm gon - na be strong.

D maj7

C#/E#

C#7

F#m

16

haps you can't see I've got a Spir - it that's liv - ing in me with

G7

A/E

Dm

Dm/B A/C# B°/D

19

cresc.

2

pow - er to hold up, to lift up my wear - y soul. Lift up my

A/E

F#m/E

E/F#

F#m E/F# F#m

B°/F

cresc.

22 24 *f*

soul! This won't get me down. O

D/E D/B D/E A G/B A/C# D D/F# E D maj7

25

down. no, this won't get me down, this won't get me down. It's gon - na

E A/E# D/E E A D A/C# Bm A E/B A/C#

28

take much more than this to stop me now.

F#m F#m/E D#° B7 E 3 F#m/E

31

I've got a Lord who lifts me up. I've got a

E A G/B A/C# D E/D D E C# C7/D# F+

34

faith and it is e-nough to give me hope, to give me

F#m B#/F Dm A/E Dm/F A/E

3

37

down. (accented) pow'r. This won't get me down, this won't get me down.

E A/E D/E E7 A D A/C# Bm7 A D/E

40

*Soloist (or a few sopranos):**mf*

Though I've got trou - bles_____

though I've got

mp

This won't get you down.



A

E m7

A

D maj7

*mf*

43



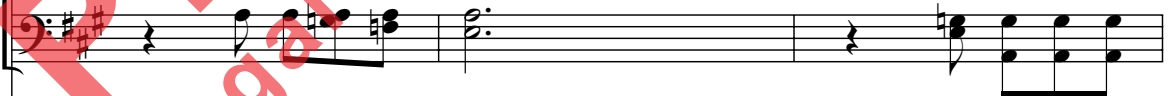
pain.

I'll meet my strug - gles._____



This won't get you down,

and you will pre -



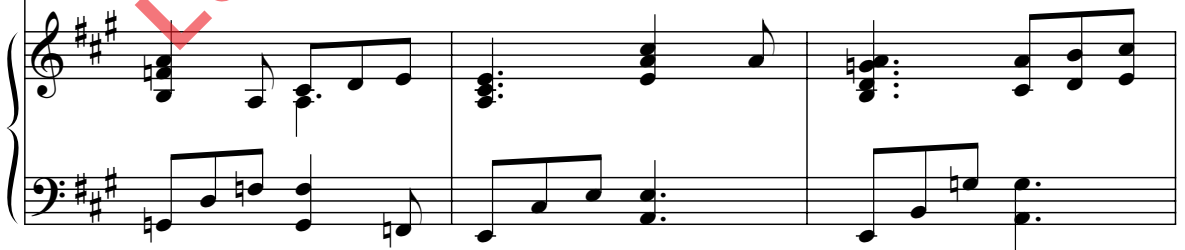
G7

G7/F

A/E

E m7(4)

A7



46 *f*

and though I may fall, I'll rise up with pow-er

vail. Though you fall you will rise up with pow-er to

f

D maj7 G9 G9/F A/E E A/E

49 \odot 4 (Soloist joins choir)

to lift up my soul

lift up to lift up your soul, lift up your soul.

E/F# F#m E/F# F#m B \flat /F D/E 3

52

53

This won't get me down. O no, this won't get me

A G/B A/C# D D/F# E Dmaj7 E A/E D/E E

55

down.

down, this won't get me down. It's gon - na take much more than

A D A/C# Bm7 A A E A/C# F#m F#m/E

58

this to stop me now. I've got a

D# B7 E F#m/E E A G/B A/C#

61

Lord who lifts me up. I've got a faith and it is e -

D E/D D E C# C#7/D# F+ F#m

64

nough to give me hope, to give me pow'r. This won't get me.

B^o/F Dm A/E Dm/F A/E E A/E E A/E D/E E7

67

down. down, this won't get me down. I've got a Lord who lifts me

A D A/C# Bm7 A G/B A/C# D E/D D

70

up. I've got a faith and it is e - nough to give me

E C# C#7/D# F+ F#m B^ø/F 3 Dm A/E Dm/F

73

hope, to give me pow'r. I'll learn to cope, I'll learn to

A/E E A/E E Dm A/EDm/F A/E E A/E

76

thrive I'll live with hope. I'll live with pow'r. This won't get me.

B^ø/F Dm A/E Dm/F A/E E A/E E A/E D/E E7

6

Much slower in 6 (♩=84)

79 *molto rit.*

down. No, this won't get me

D/A **A** **D m6/A**

molto rit.

81 ***ff*** *rit.*

down!

optional, very freely

A *8^{va}* *loco*

ff *rit.*