

Take the "A" Train

BILLY STRAYHORN

Arranged by ALAN BAYLOCK

INSTRUMENTATION

Conductor	1st Trombone
1st E \flat Alto Saxophone	2nd Trombone
2nd E \flat Alto Saxophone	3rd Trombone
1st B \flat Tenor Saxophone	Bass Trombone
2nd B \flat Tenor Saxophone	Guitar Chords
E \flat Baritone Saxophone	Guitar
1st B \flat Trumpet	Piano
2nd B \flat Trumpet	Bass
3rd B \flat Trumpet	Drums
4th B \flat Trumpet	

**PREMIER
JAZZ
SERIES**

NOTES TO THE CONDUCTOR

This is a new and more contemporary arrangement of the classic Billy Strayhorn tune, *Take the "A" Train*. It always feels like a daunting task to find a new spin on such a classic tune, but I hope you enjoy how this piece unfolds.

After a short full-band intro, the counter-melody (in the basses) is stated first, over a half-time funk groove. Pay special attention to the articulations. The more traditional melody joins in eight measures later and at the bridge, switch to a Latin groove. The drummer should always strive to make the transitions between different "feels" as smooth as possible. This can be achieved by hinting at the new groove a few beats ahead of where it's actually written.

For the last A section, you're back in the funk groove, which quickly sets up a series of solo breaks (based on the original intro) for alto 1. Trombone 1 solos the second time through if desired, and then trumpet 2 has a chance to play over some solo breaks, then solo. Baritone sax rounds out the solos (if desired on the repeat) and the full band launches into breaks for each of the soloists. I've kept the standard chord changes, so please encourage your soloists to listen to and transcribe one or more solos from any great jazz musician who has recorded this tune—which is most of them!

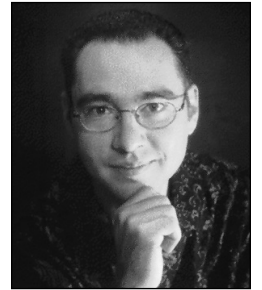
A return of the original intro material sets up a D.S. where the second A melody is restated. A bluesy riff heard throughout is augmented at the Coda and the icing on the cake is the ending from the original arrangement...almost!

On the D.S., from measure 63 through to end, the intensity should be building. Make sure the drummer makes the most of the short fills, especially during the Coda.

This arrangement was originally commissioned by Chris Allen and the Walt Whitman High School Jazz Ensemble, Bethesda, MD.

Thanks a lot for your interest and I hope you enjoy playing this chart!

—*Alan Baylock*



**Alan
Baylock**

Alan Baylock holds the position of Staff Arranger with the United States Air Force Band in Washington, D.C. and is the chief arranger for the Air Force's premier jazz ensemble, the Airmen of Note. Alan holds a Bachelor of Music Education degree from Shenandoah University (VA) and a master's degree in jazz studies from the University of North Texas.

CONDUCTOR
30644S

TAKE THE "A" TRAIN

By BILLY STRAYHORN
Arranged by ALAN BAYLOCK

SWING ♩ = 196-224

1st Eb ALTO SAXOPHONE

2ND Eb ALTO SAXOPHONE

1ST Bb TENOR SAXOPHONE

2ND Bb TENOR SAXOPHONE

E♭ BARITONE SAXOPHONE

1ST Bb TRUMPET

2ND Bb TRUMPET

3RD Bb TRUMPET

4TH Bb TRUMPET

1ST TROMBONE

2ND TROMBONE

3RD TROMBONE

BASS TROMBONE

GIITAR

PIANO

BASS

DRUMS

FILL

FILL

(SOLO)

SOLO FILL

1 2 3 4 5 6 7 8

© 1941 (Renewed) BILLY STRAYHORN SONGS, INC. (ASCAP) and FSMGI (IMRO)
All Rights Controlled and Administered by STATE ONE SONGS AMERICA (ASCAP)
This Arrangement © 2009 BILLY STRAYHORN SONGS, INC. (ASCAP) and FSMGI (IMRO)
All Rights Reserved including Public Performance


Purchase a full-length
performance recording!
alfred.com/downloads