

# CHRISTMAS EVE IS HERE

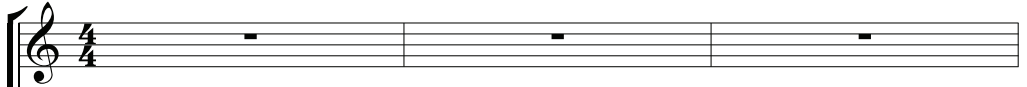
for S.A.T.B. voices with optional piano,  
handbells or tonechimes, hand drum, and tambourine\*

French Carol

Arranged by  
MICHAEL LARKIN (ASCAP)

Dance-like, not too fast (♩ = ca. 92-96)

SOPRANO  
ALTO



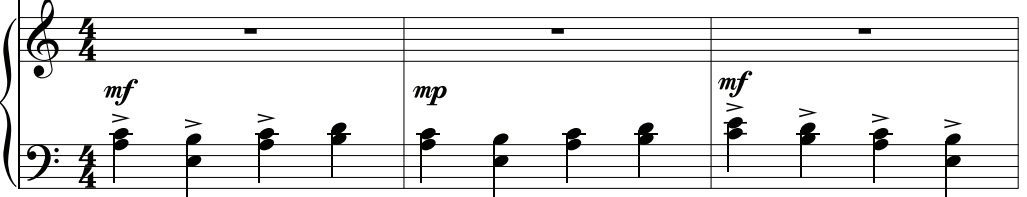
TENOR  
BASS



Ding, dong, ding! — Ding, dong, ding! — Ding, dong, ding, dong!

Dance-like, not too fast (♩ = ca. 92-96)

PIANO



4 5

Christ-mas Eve is here, see the moon is wak-ing!

Ding, dong, ding! Ding, dong, ding! — Ding, dong, ding! —

\*Also available for S.A.B. (28656).

Percussion instructions on page 11. Handbell/Tonechime part on page 12.

This arrangement may be performed a cappella or with any combination of the instrumental parts included in the publication. If performed a cappella, omit measures 18, 32, and 47-48.

Copyright © 2008 by Alfred Publishing Co., Inc.  
All Rights Reserved. Printed in USA.

To purchase a full-length performance recording of this piece, go to [alfred.com/downloads](http://alfred.com/downloads)

