

RISE UP AND FOLLOW THAT STAR

for S.A.B. voices with soloist and keyboard*

TRADITIONAL SPIRITUAL

Arranged by LLOYD LARSON (ASCAP)

Gently, very freely (♩ = ca. 80)

SOLO

mf



There's a star in the east on Christ-mas morn. _

Gently, very freely (♩ = ca. 80)

mf

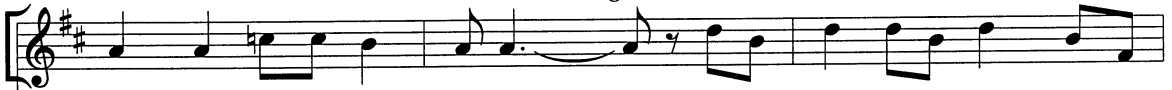
KEYBOARD



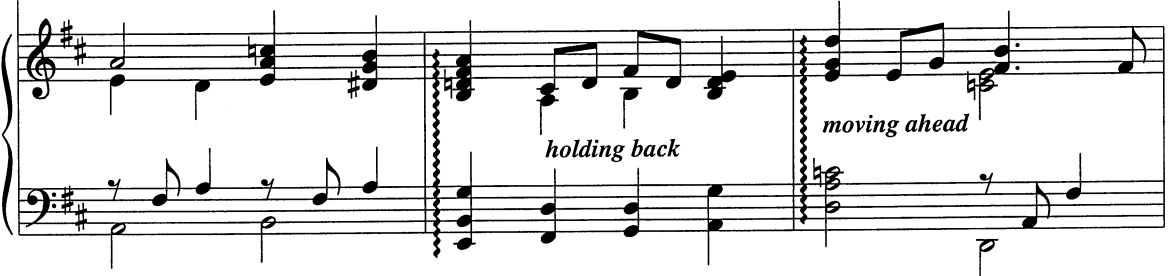
4

holding back

moving ahead



Rise up, shep-herd, and fol - low. _____ It will lead to the place where the



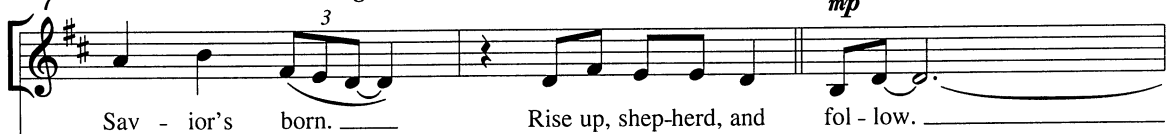
7

holding back

dim. e molto rit.

Swing (♩ = ca. 116) (♩♩ = ♩♩♩)

mp



Sav - ior's born. _____ Rise up, shep-herd, and fol - low. _____



detached, pedal sparingly

* Also available for S.A.T.B. voices, No. 23749.

Copyright © MMV by Alfred Publishing Co., Inc.
All Rights Reserved. Printed in USA.

THE CCLI LICENSE DOES NOT GRANT PERMISSION TO PHOTOCOPY THIS MUSIC.

10 *(end solo)* S. *mf*
A. There's a
B. *mf*

13
star in the east on Christ-mas morn. _ Rise up, shep-herd, and

16 fol - low. _____
fol - low. It will lead to the place where the Sav-ior's born. _