

OH, SINNER!

for 2-part voices and piano
with optional SoundPax and SoundTrax CD*

Words and Music by
JAY ALTHOUSE

Mysteriously (♩ = ca. 120)

PIANO

The piano introduction consists of two staves. The right hand plays chords and arpeggiated figures, while the left hand plays a simple bass line. The tempo is marked 'Mysteriously' with a quarter note equal to approximately 120 beats per minute.

5

PART I

mp

Oh, sin-ner, tell me what you're gon - na do.____

PART II

mp

Oh, sin-ner, tell me what you're gon - na do.____

The piano accompaniment for the first vocal entry features a steady bass line in the left hand and chords in the right hand, supporting the vocal melody.

9

Oh, sin-ner, tell me what you're gon - na do.____

Oh, sin-ner, tell me what you're gon - na do.____

The piano accompaniment for the second vocal entry continues with the same bass line and chordal structure, now including a key signature change to one sharp (F#) in the right hand.

* Also available for S.A.T.B., Level Four (23419), and S.A.B., Level Three (23420).

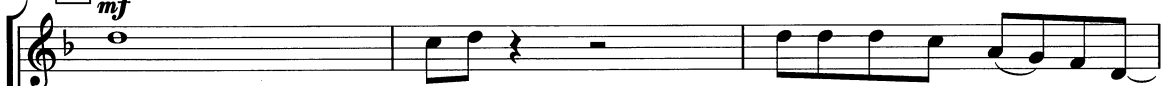
SoundTrax CD available (23422).

SoundPax available (23423) - includes score and set of parts for Alto Sax, Tenor Sax, Trumpet, Trombone, and Rhythm.

Copyright © MMV by Alfred Publishing Co., Inc.
All Rights Reserved. Printed in USA.

13

mf



Oh, sin-ner, tell me what you're gon - na do. —

mf



Oh, sin-ner, tell me what you're gon - na do. —

mf



16

SOLO *mf*



I'm gon-na walk to the might-y Riv-er Jor-dan, that's what I'll

