

# MUZIKI VUMA

(Music in the Air - Swahili)

for S.A.T.B. voices and piano  
with optional SoundTrax CD\*

Words and Music by  
**PATSY FORD SIMMS (ASCAP)**

Very rhythmically (♩ = ca. 144)

PIANO

*mf*

5

*decresc.*

9

SOPRANO  
*mf*

ALTO  
All a - round me I can hear mu - sic in the air.

TENOR  
*mf*

BASS  
Oh, mu - sic in the air.

*mp*

\* Also available for 3-part mixed (19278) and 2-part (19279).  
SoundTrax CD available (19280).  
Director may wish to add appropriate rhythm instruments.

13

I can feel— it ver-y near,— laugh-ter ev - 'ry-where.——

Oh,—— laugh-ter ev - 'ry-where.——

17

*mp - mf*

\*Ee - waa.—— Mu - zi - ki — vu - ma.——

*mp - mf*

*mp - mf*

20

Ee - waa.——

\* Ee-wah. Moo-zee-kee voo-mah. (Oh yeah. Music in the air.)

23

1.

2.

\*Che - ko mo - mu-te.

1.

2.

26

30

\* Chay-koh mohm-oo-tay. (Laughter everywhere.)

34

*mf*

Would you like\_ to have some fun?\_ Mu - sic in\_ the air.\_\_\_\_\_

*mf*

*mf*

38

Ear-ly morn\_ till set-ting sun,\_ laugh-ter ev - 'ry-where.\_\_\_\_\_

*mf*

42

Ee - waa.\_\_\_\_\_ Mu - zi - ki\_ vu-ma.\_\_\_\_\_

*mf*

45

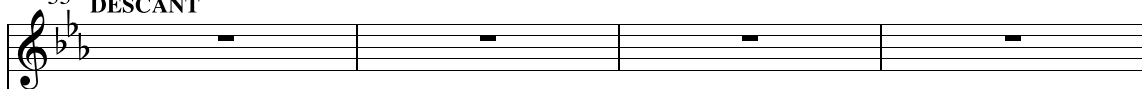
Ee - waa. \_\_\_\_\_

48

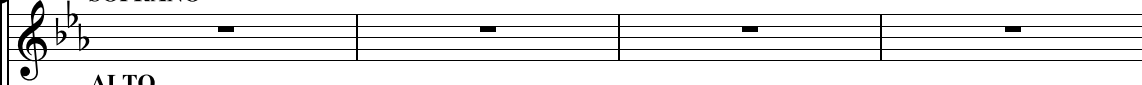
1. \_\_\_\_\_ 2. \_\_\_\_\_  
Che - ko mo - mu-te. \_\_\_\_\_

51

## 55 DESCANT

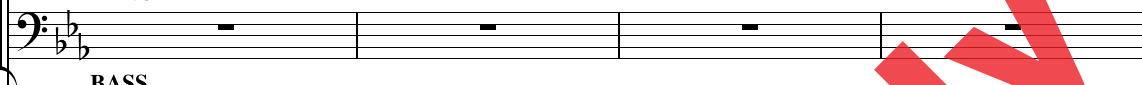


SOPRANO



ALTO

TENOR



BASS



59

*mf*

Oh, \_\_\_\_\_

mu - sic in the

*mf*

Hear the breeze \_ move through the trees. \_

Mu - sic in \_ the air. \_

*mf*

63 *cresc.*

air. \_\_\_\_\_ Laugh-ter ev - 'ry -

*cresc.*

Hear the sounds\_ come from the leaves... Laugh-ter ev - 'ry-where.\_\_\_\_

*cresc.*

*cresc.*

67 (sing both times)

where.  
te.

*f*

Be - waa. \_\_\_\_\_ Mu - zi - ki \_\_\_\_\_ vu-ma. \_\_\_\_\_

70

Musical staff for voice, measures 70-72. The melody starts with a quarter rest, followed by quarter notes G4, A4, B4, and A4. Measure 71 has a quarter rest. Measure 72 has a whole rest.

Mu - zi - ki vu - ma.

Musical staff for voice, measures 73-74. Measure 73 has a whole rest. Measure 74 has a half note G4, followed by a half rest.

Ee - waa. \_\_\_\_\_

Musical staff for voice, measures 75-76. Measure 75 has a half note G4, followed by a half rest. Measure 76 has a half note G4, followed by a half rest.

Piano accompaniment for measures 70-76. The right hand features chords and moving lines, while the left hand provides a steady bass line with quarter notes.

73

Musical staff for voice, measures 77-78. Measure 77 has a whole rest. Measure 78 has a quarter note G4, followed by a quarter rest.

Che - ko mo - mu -

2. (rejoin section)

Musical staff for voice, measures 79-80. Measure 79 has a half note G4, followed by a half rest. Measure 80 has a half note G4, followed by a half rest.

Che - ko mo mu-te. \_\_\_\_\_

Piano accompaniment for measures 77-80. The right hand has chords and moving lines, while the left hand has a steady bass line.

Piano accompaniment for measures 81-82. Measure 81 has a first ending with a repeat sign. Measure 82 has a second ending with a repeat sign.

1.

2.



76 *mp* *mf*

Che - ko mo - mu - te. Ee -

*mp* *mf*

*mp* *mf*

79 *cresc. to end*

- waa. Mu - zi - ki vu -

*cresc. to end*

*cresc. to end.*

82

ma.

*ff*

**Preview Only**  
Legal Use Requires Purchase



[alfred.com](http://alfred.com)