

English Advent Carol beautifully pairs the traditional Advent text, *O Come, O Come, Emmanuel*, with the traditional English folksong commonly known as *Scarborough Fair*. Prominently featured in the haunting opening, this folksong evokes a feeling of longing for the coming Savior, reinforced by the narration (optional).

The woodwind introduction (mm. 1-17) may be played by flute or clarinet (parts provided on pages 11 and 12, respectively), or by keyboard instrument. Perform mm. 1-38 to accompany Advent candlelighting ceremonies, repeating as necessary. The choral opening (mm. 21-38) may be sung by solo voices. In rehearsal, strive for very fluid phrases, imbued with a strong sense of the underlying eighth-note pulse.

Suggested corresponding scripture readings include Isaiah 7: 14, Matthew 1: 18-23 and Luke 1: 26-33. One basic homiletical theme is preparing for the coming Messiah who is Emmanuel, "God with us."

Patrick M. Liebergen is Director of Choral Activities at the University of Wisconsin (Stout). With music degrees from St. Norbert College in DePere, Wisconsin, the University of Wisconsin (Madison), and the University of Colorado (Boulder), he frequently appears throughout the country as an adjudicator and clinician. Dr. Liebergen has received choral composition awards from the Twin Cities Church Musicians' Association and the Wisconsin Choral Directors' Association, and his works are widely published and performed.

ENGLISH ADVENT CAROL

for S.A.B. voices, accompanied,
with opt. narrator and woodwind instrument*

VENI, VENI EMMANUEL, 9th C.

Trans. by JOHN MASON NEALE (1818-1866), alt.

Adapted by PATRICK M. LIEBERGEN

TRADITIONAL ENGLISH FOLKSONG

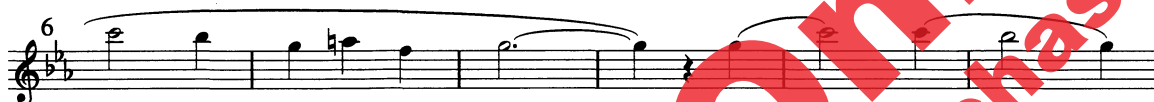
Arranged by PATRICK M. LIEBERGEN

Gently, expressively (♩ = ca. 92-96)

WOODWIND
INSTRUMENT
(optional)



Narrator (Opt.): Come down to us, O Lord of Light! Remove the shadows of the night!



Bring love and peace now from afar! We wait for You, O Morning Star!



18 SOPRANO

ALTO

BARITONE

21 *mp unis.*

Come, O

(tacet)

18

21

* May be played by flute as written, or by clarinet, transposed down one octave (parts may be found on pages 11 and 12, respectively). In absence of woodwind instrument, keyboard plays mm. 1-17.

Also available for S.A.T.B. voices, No. 19081.

Copyright © MM by Alfred Publishing Co., Inc.
All rights reserved. Printed in USA.

THE CCLI LICENSE DOES NOT GRANT PERMISSION TO PHOTOCOPY THIS MUSIC.

22

come, Em - man - u - el, come to

26

ran - som Is - ra el

mf

that

cresc.

mf

30

mourns in lone - ly ex - ile here

dim.

dim.

34 *mp*

un - til the Son of God ap -

mp

(WOODWIND)

34 *mp*

38 *p* 39 *mp cresc.* *mf*

pear. Oo Oo

p *mp cresc.* *mf*

mp cresc. *mf*

38 39 *p* *mp cresc.* *mf*

42 *dim.* 45 *p*

Oo —

dim. *mp*

Come, Thou

dim. *mp*

42 *dim.* 45 *mp*

46 *cresc.*

Oo — cheer our

cresc.

Day - spring, come — and cheer,

46 *cresc.*

50 *mf* *mp*

souls by Your ad - vent here; Dis -

mf

Detailed description: This system contains the first two staves of music. The top staff is a vocal line in G major (one flat) with a treble clef. It begins at measure 50 with a mezzo-forte (*mf*) dynamic. The lyrics "souls by Your ad - vent here;" are written below the notes. The line ends with a mezzo-piano (*mp*) dynamic. The bottom staff is a piano accompaniment in bass clef, also starting at measure 50. It features a steady bass line with some chords.

mf *mp*

Detailed description: This system contains two staves of piano accompaniment. The top staff is in treble clef and the bottom staff is in bass clef. Both start at measure 50. The dynamics are mezzo-forte (*mf*) and mezzo-piano (*mp*). The music consists of chords and moving lines in both hands.

54

perse the gloom - y clouds of night,

Detailed description: This system contains the first two staves of music for the second system. The top staff is a vocal line in G major with a treble clef. It begins at measure 54 with the lyrics "perse the gloom - y clouds of night,". The bottom staff is a piano accompaniment in bass clef, providing harmonic support for the vocal line.

54

Detailed description: This system contains two staves of piano accompaniment. The top staff is in treble clef and the bottom staff is in bass clef. Both start at measure 54. The music consists of chords and moving lines in both hands.

58 *cresc.*

— and death's dark shad - ows put — to

mp *cresc.*

58 *cresc.*

62 *cresc.*

62 *mf accented* *cresc.*

flight. Re - joice! Re - joice! Em - man -

mf accented *cresc.*

accented

mf *cresc.*

62 *accented* *mf* *cresc.*

63

66 *f*

- u - el shall come to you, O

f

66 *f*

f

70 *dim.* *poco rit.*

Is - ra - el!

dim.

dim. *mf poco rit.* *smoothly*

70 *dim.* *mf poco rit.* *smoothly*

74

a tempo
mp smoothly

Oo _____
mp smoothly

74

a tempo
mp

78

rit. poco a poco al fine

dim.

pp

Oo _____
dim. *pp*

rit. poco a poco al fine

dim.

pp

rit. poco a poco al fine *dim.* *pp*

78

rit. poco a poco al fine

dim.

pp

ENGLISH ADVENT CAROL

FLUTE

TRADITIONAL ENGLISH FOLKSONG
Arranged by PATRICK M. LIEBERGEN

Gently, expressively (♩ = ca. 92-96)

mp

7

15

22

8

30

9

39

mp cresc.

mf

42

45

dim.

mp

mf

53

54

mp

59

63

accented

cresc.

mf

65

cresc.

f

dim.

71

74

smoothly

a tempo

mf poco rit.

mp

77

rit. poco a poco al fine

dim.

pp

Copyright © MM by Alfred Publishing Co., Inc.
All rights reserved. Printed in USA.

THE CCLI LICENSE DOES NOT GRANT PERMISSION TO PHOTOCOPY THIS MUSIC.

ENGLISH ADVENT CAROL

B♭ CLARINET

TRADITIONAL ENGLISH FOLKSONG
Arranged by PATRICK M. LIEBERGEN

Gently, expressively (♩ = ca. 92-96)

mp

8

15

22

8

30

9

39

mp cresc.

mf

42

45

7

dim.

mp

mf

53

54

mp

59

63

accented

cresc.

mf

65

cresc.

f

dim.

71

smoothly

74

a tempo

mf poco rit.

mp

77

rit. poco a poco al fine

dim.

pp

19082

Copyright © MM by Alfred Publishing Co., Inc.
All rights reserved. Printed in USA.

THE CCLI LICENSE DOES NOT GRANT PERMISSION TO PHOTOCOPY THIS MUSIC.

