

1 Corinthians 4:10  
We are weak, but you are strong.

# JUST A CLOSER WALK WITH THEE

for S.A.T.B. voices with soloist, accompanied\*

Traditional hymn arranged by  
MARK HAYES

Freely ( $\text{♩} = \text{ca. } 80$ )

ACCOMP.

7 Moderate gospel swing ( $\text{♩} = \text{ca. } 84-88$ ) ( $\text{♩} = \text{♩}^3$ )

S. *mp* *mf*

A. *mp* *mf*

T. *mp* *mf*

B. *mp* *mf*

I am weak, but Thou art strong;

Moderate gospel swing ( $\text{♩} = \text{ca. } 84-88$ ) ( $\text{♩} = \text{♩}^3$ )

B $\flat$  Adim<sup>7</sup> Gm<sup>7</sup> B $\flat$ /D Dbdim<sup>7</sup> Cm<sup>7</sup> F<sup>9</sup>

*mp* *mf*

*cresc.* 3 3 3

\* Also available for S.A.B. voices with soloist, No. 18948. Parts for 2 alto and 2 tenor saxophones, 3 trumpets, 2 tenor trombones, bass trombone, electric guitar, bass, drums and director's score, No. 18950, and a full performance/accompaniment compact disc, No. 18949, are available separately.

Copyright © MCMXCIX by Alfred Publishing Co., Inc.  
All rights reserved. Printed in USA.

THE CCLI LICENSE DOES NOT GRANT PERMISSION TO PHOTOCOPY THIS MUSIC.

11 wrong; wrong;

Je - sus, keep me from all wrong, from all wrong;

Cm Dm<sup>7</sup> Ebmaj<sup>7</sup> Edim<sup>7</sup> F<sup>9</sup> Eb/F B<sup>b</sup> Bdim<sup>7</sup> Cm<sup>7</sup>(add4) F<sup>7</sup>

15 *f* long *mf*

I'll be sat - is - fied as long, just as long as I


*f* *mf*

B<sup>b</sup> Bbmaj<sup>7</sup> B<sup>b</sup>7 Ab/B<sup>b</sup> B<sup>b</sup>7 Eb<sup>o</sup> Edim<sup>7</sup>

19

walk, let me walk close to Thee.

B<sup>b</sup>/F Gm<sup>7</sup> Cm<sup>7</sup>(add4) Eb/F B<sup>b</sup> Cm<sup>7</sup> B<sup>b</sup>/C Eb/F F<sup>9</sup>

23  BARITONE SOLO (sing mm. 23-36 on repeat only)

*mf*



Just a clos - er walk with Thee,

S. *mf*



Just a clos - er walk with Thee,

T. *mf*



B.

23 

Bb

Adim<sup>7</sup>

Gm<sup>7</sup>

Dm<sup>7</sup>

Dbdim<sup>7</sup>

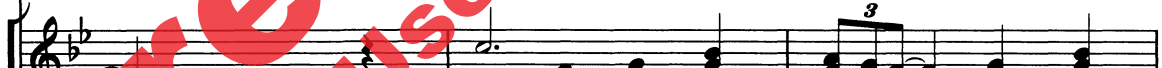
Cm<sup>7</sup>



26



grant it, Je - sus, is my



grant it, Je - sus, is my



26

F<sup>9</sup>

Cm

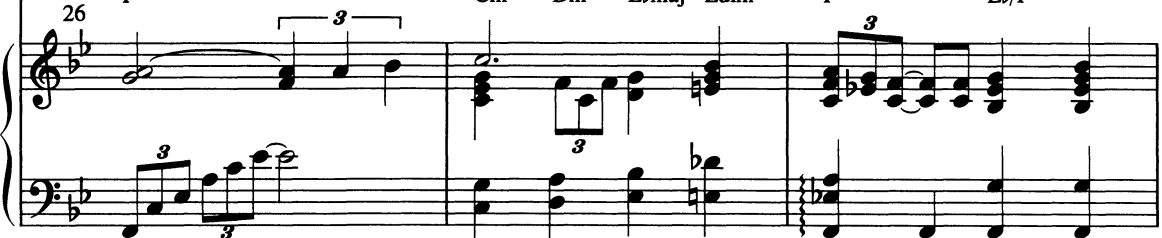
Dm<sup>7</sup>

Ebmaj<sup>7</sup>

Edim<sup>7</sup>

F<sup>9</sup>

Eb/F



29 *f* 31

plea, I want to talk ev-'ry day and  
plea,

plea, is my plea, dai - ly

ev - 'ry day I'm

29 *Bb*<sup>2</sup> *Bdim*<sup>7</sup> *Cm*<sup>7(add4)</sup> *F*<sup>7</sup> 31 *Bb* *Bbmaj*<sup>9</sup>

32 *mf*

walk so close to Thee: Let it

walk ing close to Thee: Let it

walk - ing close to Thee, *even 8ths* walk-ing close to Thee: Let it

32 *Bb*<sup>7</sup> *Bb*<sup>9(#5)</sup> *Bb*<sup>7(#5)</sup> *Eb*<sup>6</sup> *Edim*<sup>7</sup>

*even 8ths* *mf*

2nd time to Coda (p. 9, m. 55)

35

be, dear Lord, let it

2nd time to Coda (p. 9, m. 55)

be, dear Lord, let it be.

be, dear Lord,

2nd time to Coda (p. 9, m. 55)

35

Bb<sup>2</sup>/F Bb/F G<sup>7(b9)</sup> Cm<sup>7(add4)</sup> Eb/F Bb

39 (BARITONE SOLO) warmly, with an *ad lib* quality *mf*

38

Through this world of toil and

38

Dm<sup>7</sup> G<sup>13(b9)</sup> Cm<sup>7</sup> F<sup>13(b9)</sup> 39 Bbmaj<sup>9</sup> Bb<sup>6</sup> Adim<sup>7</sup> Gm<sup>7</sup> Dm<sup>7</sup> Dbdim<sup>7</sup>

\_\_\_\_\_ snares, \_\_\_\_\_ If I fal-ter, Lord, who

*mf*  
Through this world of toil and snares,

*mf*

41 Cm<sup>7</sup> F<sup>7</sup> Eb/F F<sup>13</sup> C#m<sup>7</sup> Cm<sup>7</sup> F<sup>9</sup> Eb/F

47

45 [ 3 ] cares? \_\_\_\_\_ Who with me my bur-dens

Does some-one care? \_\_\_\_\_ Who will be with me, bur-dens

*f*

45 Bb<sup>2</sup> Gm<sup>9</sup> Gm<sup>7</sup> Cm<sup>7</sup>(add4) F<sup>7</sup> 47 Bb Cm/Bb Bb Cm/F Bb<sup>7</sup> Fm<sup>7</sup> E<sup>7</sup>(b5)

49 *mf* *3*

share? \_\_\_\_\_ None but Thee, \_\_\_\_\_ my dear

share, bur - dens share?

49 Ebmaj<sup>7</sup> Edim<sup>7</sup> Bb/F Gm<sup>7</sup>

52

*D.S. al Coda*  
(p. 4, m. 23)

Lord, none but Thee.

*mf*

None but Thee, on - ly You, Lord.

*D.S. al Coda*  
(p. 4, m. 23)

Cm<sup>7</sup>(add4) Eb/F Bb G<sup>7</sup>(<sup>b9</sup>/<sub>♯3</sub>) Cm<sup>7</sup> B<sup>9</sup>

*D.S. al Coda*  
(p. 4, m. 23)

52

⊕ Coda

57

(rejoin section)

be. *mp*

be. *mp* When my

⊕ Coda

57

*cresc.* *f* *mp*

*mf*

*f* *mp*

58

fee - ble life is o'er, time for

*mf*

o'er, life is o'er, time for me,

*mf*

Am C<sup>6</sup>/E D<sup>#dim</sup>7 Dm7 G<sup>7</sup> Em<sup>7</sup> Eb<sup>dim</sup>7 Dm<sup>7</sup>

62

me will be no more, time will be no more; guide me

guide me, oh, so *f*

it will be no more, time will be no more; guide me

*f*

G<sup>7</sup> F/G C C<sup>#dim</sup>7 Dm<sup>7</sup> G<sup>7</sup> C Cmaj<sup>9</sup>



10 66

gent - ly, safe - ly o'er, safe - ly o'er to that shin - ing king - dom

C<sup>7</sup> Bb/D C<sup>7</sup>/E F<sup>6</sup> F#dim<sup>7</sup> C<sup>2</sup>/G C/G Em/G C/G

70

shore, to that shore. Just a

mf

Csus/G F/G C F/G C<sup>2</sup> C Bdim<sup>7</sup>

74

clo - er walk with Thee, grant it,

Am<sup>7</sup> Em<sup>7</sup> Ebm<sup>7</sup> Dm<sup>7</sup> G<sup>9</sup> Ebdim<sup>7</sup> Dm Em<sup>7</sup> Fmaj<sup>7</sup> F#dim<sup>7</sup>

78 *3* plea, \_\_\_\_\_

Je - sus, - is my plea, is my plea, \_\_\_\_\_

*G*<sup>9</sup> *F/G* *C*<sup>2</sup> *C#dim*<sup>7</sup> *Dm*<sup>7(add4)</sup> *G*<sup>7</sup>

81 *f* dai - ly walk - ing close to Thee: *decresc.*

ev - 'ry day I'm walk - ing close to Thee, *decresc.*

*C* *Cmaj*<sup>9</sup> *C*<sup>7</sup> *C*<sup>9(#5)</sup> *C*<sup>(#5)</sup> *F*<sup>6</sup> *even 8ths*

walk - ing close to *even 8ths*

walk - ing close to *decresc.*

84 *mp* Let it be, dear Lord, let it *mf*

Thee: *mp* *mf*

*F#dim*<sup>7</sup> *C/G* *Csus/G* *Dm*<sup>7</sup>

be, dear Lord, let it be, dear Lord, let it

*f* *rit.* *mf* *ten.*

*f* *mf* *ten.*

C<sup>2</sup>/E C/E Em C/E Fm<sup>6</sup> Dm<sup>7(b5)</sup> C<sup>2</sup>/G F/G

*f* *rit.* *mf* *ten.*

*mf* *ten.*

91 *a tempo*

be, let it be.

*rit.* *mp*

*mp*

*a tempo*  
N.C.

Fm<sup>7</sup> Bb<sup>6/9</sup> Bb<sup>9</sup> C

*mp*

*mp*

*even 8ths* *rit.* *even 8ths*

**Just a Closer Walk with Thee** is a gospel arrangement by Mark Hayes of a beloved traditional hymn. An inspired choice for worship throughout the year, it may be especially appropriate for Lent, evangelism and stewardship. Suggested corresponding lectionary readings include Psalm 6, Isaiah 35: 1-4, 1 Corinthians 4: 10 and Hebrews 12: 10-14. One basic homiletical theme is the frailty of humankind, sustained and strengthened throughout life's journey by the love and grace of God. In true gospel fashion, a solo voice is prominently featured in this choral arrangement. The solo may be sung by one person or by a small group or section. It may also be performed by a unison choir.

**Mark Hayes** is an award-winning concert pianist, composer and arranger of choral, piano, and orchestral music. With over 400 published works to his credit, Mark has also recorded numerous solo piano albums and has received the Gospel Music Association's prestigious Dove Award, which is equivalent to a Grammy in gospel music.

