

MARY, HOW COULD YOU HAVE KNOWN?

for S.A.T.B. voices, accompanied,
with opt. clarinet*

Words and Music by
SALLY K. ALBRECHT
and **JAY ALTHOUSE**

Tenderly (♩ = ca. 72-76)

ACCOMP.

mp
(+ Cl.)

5 SOPRANO
ALTO
TENOR
BASS

6 *mp*

Mar - y, how could you have known that an

(- Cl.)

8

an - gel would come and pro - claim the ho - ly birth, and you would be cho - sen to

unis. mp

* Part for B♭ clarinet may be found on page 8. Also available for S.A.B. voices, No. 18382.

11 *unis.*

bring God's son to earth? Mar - y, how could you have

14

known?

(+ Cl.)

18 *mp*

Mar - y, how could you have known that your

mp

(- Cl.)

21

child would be the Sav - ior just as the proph - ets said, and

(+ Cl.)

(+ Cl.)

23

that He would be born in a low-ly man-ger bed? Mar - y,

unis.

(- Cl.)

26

unis.

how could you have known?

(+ Cl.) *cresc.*

29 With a bit more movement

mf

Were you not be-wil-dered, was it ver-y strange? Did you ev-er won-der

mf

With a bit more movement

mf

32

how your life would change? How could you be read-y? How did you pre-pare?

35

rit.

How could you im-ag-ine? Did you say a prayer?

unis.

(- Cl.)

rit.

mp (+ Cl.)

38 Tempo I (♩ = ca. 72-76)

mp

Mar - y, how could you have known that your son would be Mes-si - ah, and

Tempo I (♩ = ca. 72-76)

(- Cl.)

41

all the world be-hold that you would name Him Je-sus as an-gels had fore-told?

unis. mp

44 *mp gradual cresc.*

Mar - y, Mar - y, Mar - y, Mar - y, —

gradual cresc.

f

f

gradual cresc.
(+ Cl.)

f

48 *Slowly, freely*

mp *unis. p*

Mar - y, how could you have known?

mp *unis. p*

Slowly, freely

(- Cl.) *mp* *p* (+ Cl.)

The image shows a musical score for a choral piece. It consists of four staves. The top two staves are for vocal parts (Soprano and Bass), and the bottom two are for piano accompaniment. The tempo is 'Slowly, freely'. The first system has a vocal line with the lyrics 'Mar - y, how could you have known?' and piano accompaniment. The second system continues the piano accompaniment. A large red watermark 'Preview Only' is overlaid diagonally across the page.

Luke 1: 30-33

*Then the angel Gabriel said to Mary,
 "Do not be afraid, for you have found favor with God.
 You will conceive in your womb and bear a Son,
 and you will name Him Jesus.
 He will be great, and will be called the Son of the Most High,
 and God will give to Him the throne of David.
 He will reign over the house of Jacob forever,
 and His kingdom will never end."*

Mary, How Could You Have Known? is an anthem for Advent or Christmas. Suggested corresponding lectionary readings include Isaiah 7: 10-16, Matthew 1: 18-25, Luke 1: 26-38 & 46-56 and Romans 1: 1-7. One basic homiletical theme is the fulfillment of prophecy: a virgin will conceive and bear a Son, Emmanuel, God with us.

Sing this poignant anthem with very flowing phrases and great sensitivity to text. Especially in mm. 29-37, avoid the temptation to sing "note-for-note." Instead, strive for a feeling of two pulses per measure.

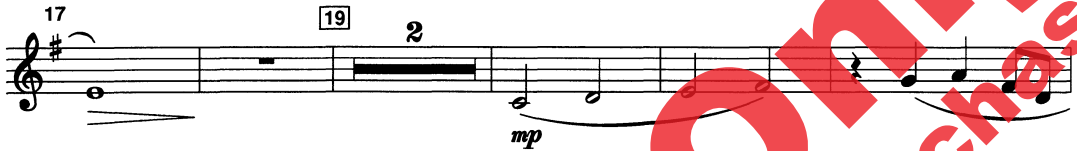
Jay Althouse has written choral music for all levels of school and church choirs. He has over 450 choral compositions and arrangements in print. Jay received a B.S. in Music Education and an M. Ed. in Music from Indiana University of Pennsylvania. His wife, **Sally K. Albrecht**, is the Director of School Choral Publications for Alfred Publishing Co., Inc. The author of two books on choral movement, she received a B.A. in Music and Theatre from Rollins College and, from the University of Miami (Florida), both an M.A. in Drama and an M.M. in Accompanying. Sally has over 100 choral publications in print.

MARY, HOW COULD YOU HAVE KNOWN?

CLARINET

Words and Music by
SALLY K. ALBRECHT
and JAY ALTHOUSE

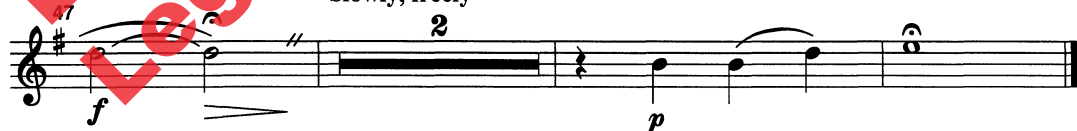
Tenderly (♩ = ca. 72-76)



38 Tempo I
(♩ = ca. 72-76)



Slowly, freely



Copyright © MCMXCIX by Alfred Publishing Co., Inc.
All rights reserved. Printed in USA.

18381

THE CCLI LICENSE DOES NOT GRANT PERMISSION TO PHOTOCOPY THIS MUSIC.



alfred.com