



The Bass Clef Sign


 Locates the F below the middle of the keyboard.

This sign came from the letter F: 

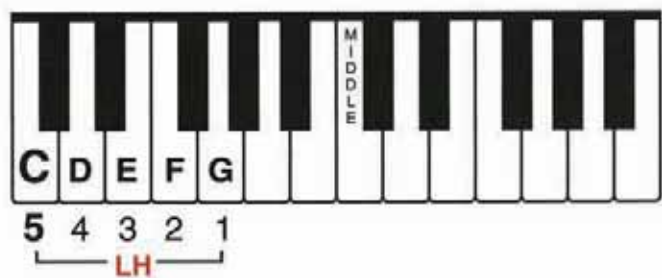


This is the F line.



 The F line passes between the two dots of the F clef sign!

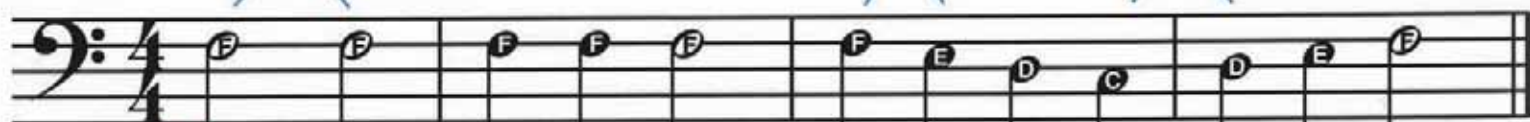
By moving up or down from this F, you can name any note on the bass staff.



Notes REPEATED on same line or space: REPEAT same key.

Notes stepping DOWN to next space or line: step DOWN to next white key.

Notes stepping UP to next space or line: step UP to next white key.



LH 2

F, same, still the same, Then step down and up a - gain.



Sight Reading

The Bass Clef


1. Clap (or tap) & count.
2. Play finger numbers in the air & count.
3. Play & count.
4. Play & say the note names.



GM/CD 1-6 (54)

a. 

GM/CD 1-7 (55)

b. 

GM/CD 1-8 (56)

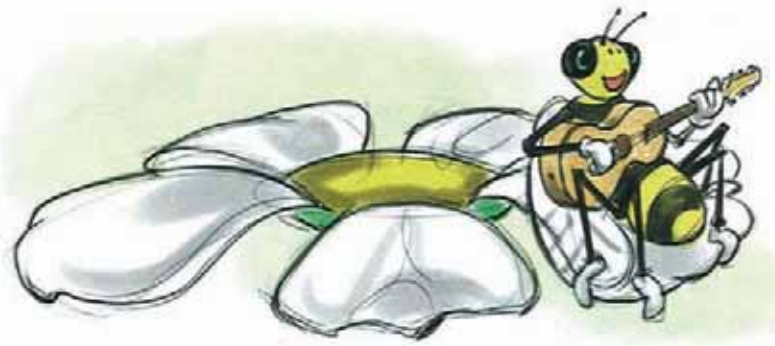
c. 

GM/CD 1-9 (57)

d. 



Ensemble
PART 1



Rock Anywhere!

GM/CD 2-45 (90)

Moderately fast

1

mf 1. Rock can be found in a tunnel!
2. Some like to rock in a boat!

5

Rock's e - ven found on the moon!
I like to rock to a note!

9

f Grand - fa - ther rocks in an old rock - ing chair, So I
Mom used to rock me to sleep with a song, So I've

13

guess you can rock an - y - where!
al - ways been rock - ing a - long!

TEACHER: See page 78.