

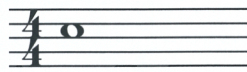
TIME SIGNATURE

$\frac{4}{4}$ = 4 beats in each measure
 $\frac{4}{4}$ = quarter note receives 1 beat

SOLO

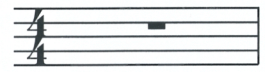
One person playing

WHOLE NOTE



1 & 2 & 3 & 4 &
 Receives 4 beats
 in $\frac{4}{4}$ time.

WHOLE REST



1 & 2 & 3 & 4 &
 Indicates a whole
 measure of silence.



FIRST NOTES AND RESTS

1
 Count: 1 & 2 & 3 & 4 & 1 & 2 & 3 & 4 &

GOING UP

2

LINES AND SPACES

3

WATCH THOSE RESTS

4



UP AND DOWN

5

TWO OF A KIND

6

ACCENT ON LISTENING

Listen carefully to the soloist, then match the pitch.

7
 SOLO BAND SOLO BAND SOLO BAND SOLO BAND