

Teach Yourself To Play Banjo

.....
MORTY MANUS & RON MANUS

Everything you need to know to start playing the 5-String Banjo

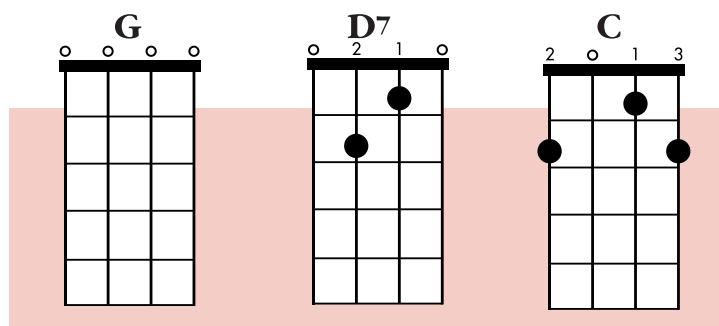
- **Teaches you how to play the banjo
with an easy-to-follow approach
that makes learning fun**
- **Introduces more than a dozen
strums and rolls in folk, country
and bluegrass styles**
- **Includes over 30 great songs
with lyrics**

Cover Photo: Courtesy of Gibson
Book Production and Music Engraving: Bruce Goldes
Project Editor: Kevin M. Mitchell



Copyright © MCMXCVI by Alfred Publishing Co., Inc.
All rights reserved. Printed in USA.

The chords used in this song are:

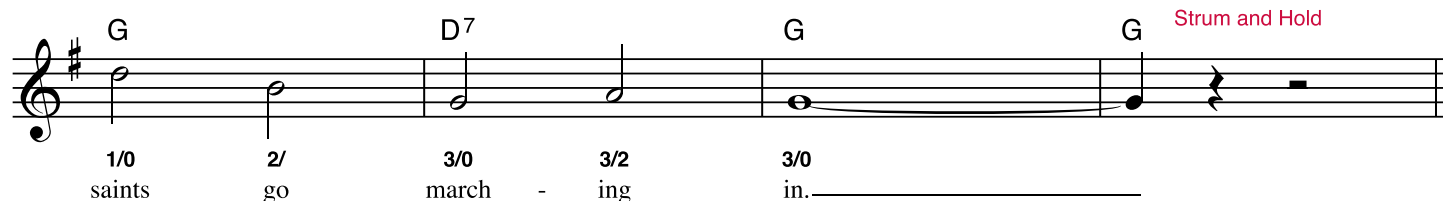
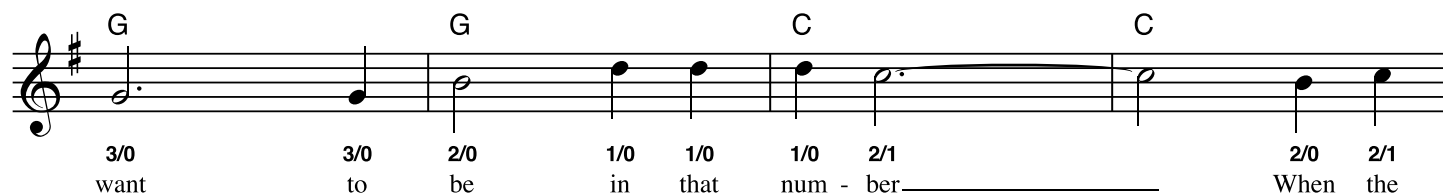
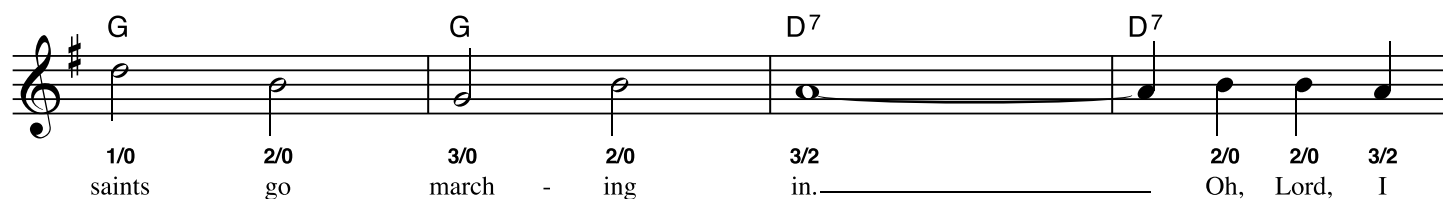
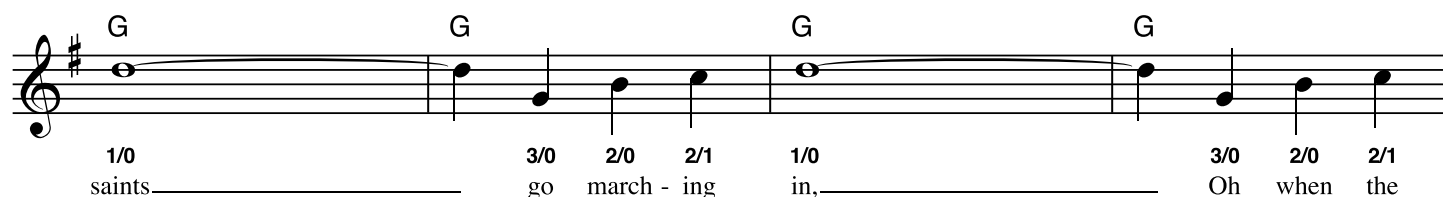
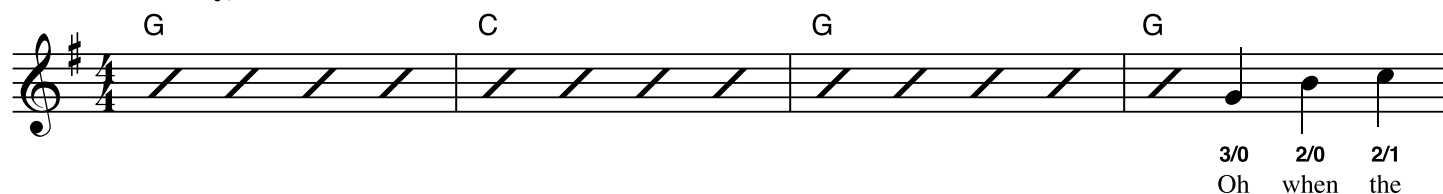


In this arrangement you'll start by strumming four measures as an introduction. This serves the purpose of setting the tempo and getting the key fixed in your mind before you start singing. Once you can play the song using the basic strum, try it with Strum No. 1.

When the Saints Go Marching In

Gospel and Dixieland Jazz Standard

Moderately, with a beat





C TUNING

Although the G tuning is the easiest and most common tuning of the five-string banjo, there are many other possible tunings that can be used for certain keys and special effects. All the songs you've played so far have been in the G tuning. The **C tuning** is the same as the G tuning except that the fourth string is tuned down a full tone from D to the note C.

Tuning to a Keyboard

Counting middle C as one, find the C below middle C, which is the eighth white key to the left. Tune the fourth string to this note.

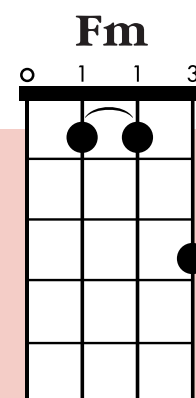
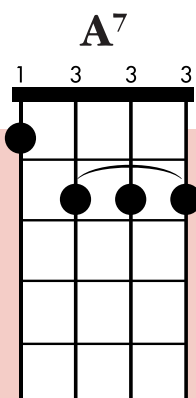
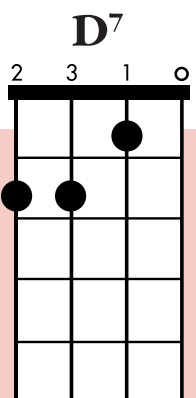
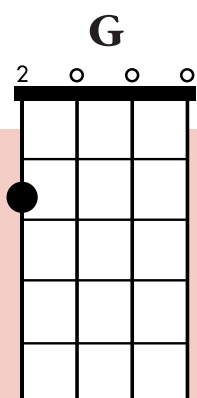
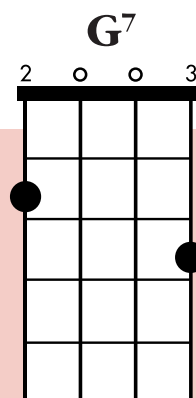
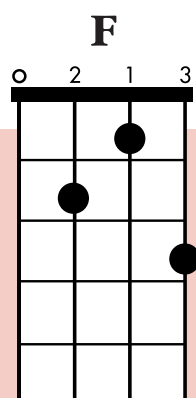
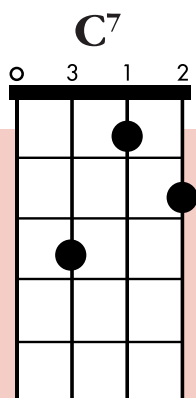
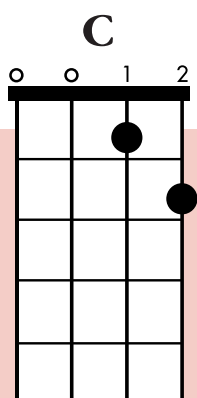
Tuning to a Pitch Pipe or Electronic Tuner

Tune the fourth string to the C below middle C.

Tuning Relatively

Tune the fourth string at the seventh fret to the third string open. Or, tune the open fourth string an octave below the second string, first fret. (Remember that an octave is the sound of the first two notes of the song "Over the Rainbow.")

Whatever method you use for tuning, you'll wind up with the banjo tuned: **G C G B D**



Since the note on the fourth string has changed, this means that the chords in the C tuning will be slightly different from the same chords in G tuning. Here are a few basic chords in the C tuning.