

**BASS TODAY** provides you with a thorough introduction to note reading, scales, chords and music fundamentals for the *electric* and *acoustic* bass. It includes both *fingerstyle* and *pickstyle* right hand techniques—plus a variety of musical styles that include pop, rock, classical, Latin, country, folk and blues. A CD (#14085)

# BASS TODAY

BY JERRY SNYDER

containing many of the exercises and most of the songs included in this book may be obtained from your local music dealer or directly from the publisher. This book is also designed to be used with **GUITAR TODAY** (#346). Group instruction can now include the electric or acoustic bass player along with guitar students.

## CONTENTS

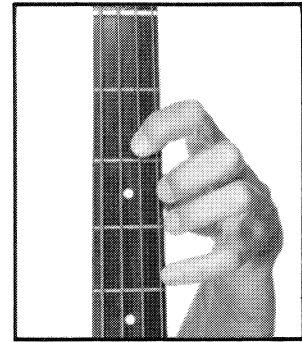
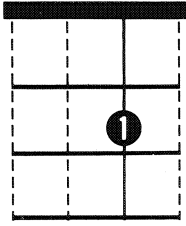
	Page	CD Track		
Types of Basses . . . . .	2		Third and Second Position	
Right Hand Playing Techniques, Pickstyle and Fingerstyle . . . . .	4		Fingerboard Chart . . . . .	25
Left Hand Position, Holding the Bass . . . . .	6		Leger Lines, Open 4th String— E, Em Chord (root and 5th) . . . . .	26
Tuning the Bass . . . . .	7	1	First and Half Position, F on the 4th String . . . . .	27 22
Music Notation . . . . .	8		C, G and G7 Chords (root and 5th) . . . . .	28
Notes on the 2nd and 1st Strings—E and F . . . . .	10	2, 3	<i>Rescue, Chord Study</i> . . . . .	29
<i>Mist</i> . . . . .	11	4	<i>Meditation</i> . . . . .	29 26
G on the 1st String . . . . .	11	5	Half Step and Whole Step, Sharps, F on the 2nd String . . . . .	30
Review: Notes on the 2nd and 1st Strings, Right Hand Technique . . . . .	12		D7 Chord (root, 3rd and 5th) . . . . .	31 27
<i>Chelsie</i> . . . . .	12	6, 23	<i>Bass-Chord Study</i> . . . . .	31 28
Notes on the 3rd String— B and C, <i>B-C Mix</i> . . . . .	13	7-9	Dynamics . . . . .	32
D on the 2nd String . . . . .	14	10	<i>El Coqui</i> . . . . .	32 29
Review: Notes on the 1st, 2nd and 3rd Strings . . . . .	14		Major Scale, G Major Scale . . . . .	33
<i>Easy Rock</i> . . . . .	15	11	<i>G Scale Study</i> . . . . .	33 30
Tempo Markings, <i>Rockin' On Two, Breezin'</i> . . . . .	15		Key Signature . . . . .	34
Quarter Rest, Repeat Sign . . . . .	16		<i>Folk Song</i> . . . . .	34 31, 32
<i>Comin' Out Rock</i> . . . . .	16	12	F# on the 4th String . . . . .	34
Rock Bass Accompaniment . . . . .	16	13	G# on the 1st String, Natural Sign, A on the 1st String . . . . .	35
Dotted Half Note, 3/4 Time Signature . . . . .	17		Shifting . . . . .	36
<i>Prelude</i> . . . . .	17	14, 20	<i>Spanish Song</i> . . . . .	36 33, 34
Dal Segno . . . . .	17		B on the 1st String, Am, Dm and E7 Chords (roots and 6ths) . . . . .	37
Tie . . . . .	18		<i>Harvest</i> . . . . .	37 35, 36
<i>Sort of Blue</i> . . . . .	18	24	Eighth Notes . . . . .	38 37
<i>Mary Ann</i> . . . . .	18		Playing Techniques . . . . .	38
<i>Some Kind of Sunset</i> . . . . .	19	15, 21	<i>Ode To Joy</i> . . . . .	39 38, 39
Incomplete Measure . . . . .	20		<i>Are You Sleeping?</i> . . . . .	39
<i>Gentle</i> . . . . .	20	16	<i>Rockin' Out</i> (lead) . . . . .	40 40
Notes on the 4th and 3rd Strings, G and A, A on the 4th String . . . . .	21		Moveable Positions . . . . .	40
Review: Notes in Second Position . . . . .	22	17	<i>Rockin' Out</i> (accompaniment) . . . . .	41 41
Using the 4th finger in Second Position . . . . .	22		Playing Techniques . . . . .	41
<i>Study</i> . . . . .	22	18, 25	<i>G Jam</i> . . . . .	41 42, 44
<i>Jingle Bells, Da Capo</i> . . . . .	23		C on the 1st String, C Major Scale . . . . .	42
<i>Peaceful Feeling</i> . . . . .	23	19	<i>Bourrée I</i> . . . . .	42 43
Chords, Root and 5th of the Chord . . . . .	24		Bass Lines . . . . .	43 45
			Lead Lines . . . . .	43 46
			Playing Technique . . . . .	43
			D7, G7 and A7 Chords (roots, 3rds and 5ths) . . . . .	44
			<i>Celebrate</i> (bass line) . . . . .	45 47
			Moveable Positions . . . . .	45
			<i>Celebrate</i> (lead) . . . . .	45 48
			Arpeggios (broken chords) . . . . .	46
			Em Chord . . . . .	46 49
			Am and E Chords (roots, 3rds and 5ths) . . . . .	46 50
			<i>Daybreak</i> . . . . .	47 51, 52
			Dm Chord (root, 3rd and 5th) . . . . .	47
			<i>Am Etude</i> . . . . .	47 53
			Arpeggio Studies . . . . .	48 54
			Supplemental Material— Two Moveable Positions . . . . .	48
			<i>Classical Study</i> . . . . .	49 55
			For Bass Only . . . . .	49 56
			<i>Bourrée</i> . . . . .	49 57, 58
			<i>Andantino</i> (accompaniment) . . . . .	50 59
			<i>Andantino</i> (solo) . . . . .	50 60
			<i>Saint James Infirmary</i> . . . . .	51 61
			<i>Iberia</i> . . . . .	51 62, 63
			Flats, Enharmonics . . . . .	52
			Chromatic Scale . . . . .	52 64
			Tied Eighth Note Rhythms . . . . .	53 65
			<i>Groovin'</i> (lead) . . . . .	53 66
			<i>Groovin'</i> (accompaniment) . . . . .	53 67
			<i>Shout</i> (rhythm-bass) . . . . .	54 68
			<i>Shout</i> (lead) . . . . .	54
			D on the 1st String . . . . .	54
			Supplemental Material . . . . .	55 69
			Seventh Position—Electric Bass . . . . .	55 70
			<i>Shout</i> (lead) . . . . .	55
			<i>Gypsy Nights</i> . . . . .	56 71
			<i>Minuet</i> . . . . .	56 72
			A Chromatic Scale . . . . .	57 73
			Moveable Chromatic Scale, Chord / Bass Note (Em / D) . . . . .	57
			<i>Nuage</i> . . . . .	57 74, 75
			<i>Boogie Bass</i> . . . . .	58 76
			<i>G Boogie Bass</i> . . . . .	58 77
			<i>Sleeper's Wake</i> (theme) . . . . .	58 78, 79
			Walking Bass . . . . .	59 80
			Half Step Leading Tone, Dotted Quarter Note . . . . .	59
			<i>Scarborough Fair</i> . . . . .	60 81, 82
			F Chord (root, 3rd and 5th) . . . . .	60
			<i>C Blues</i> . . . . .	60 83
			Third and Second Position . . . . .	61
			<i>Blues Rock</i> . . . . .	61 84, 85
			Rhythm Study . . . . .	62
			<i>Country Rock</i> . . . . .	62 86, 87
			2/4 Time Signature . . . . .	63
			<i>House of the Rising Sun</i> . . . . .	63 88-90
			Syncopation . . . . .	64
			<i>Rhythm 'n' Blues</i> . . . . .	64 91, 92



Copyright © MCMLXXXVIII by Alfred Publishing Co., Inc.  
All Rights Reserved. Printed in USA.  
ISBN 0-88284-906-9 (Book)  
ISBN 0-88284-908-5 (Book and CD)  
ISBN 0-7390-1449-8 (CD)

# NOTES ON THE SECOND AND FIRST STRINGS

## E 2nd fret, 2nd string



Place the 1st finger of the left hand on the 2nd fret, 2nd string, as close as possible to the fret wire. The fleshy part of the finger is actually touching the fret wire. Apply pressure just behind the fret wire. In music notation, the E is located on the 3rd space of the bass staff.

**SECOND (II) POSITION.** On the *electric bass*, you are in *second position* when your index finger is located on the 2nd fret. Position on the neck is determined by the location of the index finger. (On the *upright acoustic bass*, it is called the *1st position* when you play the E on the 2nd string with the index finger.)

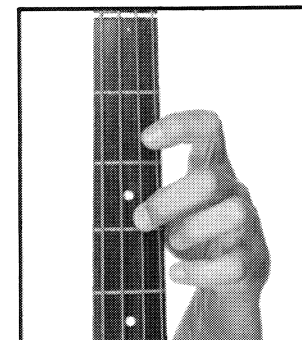
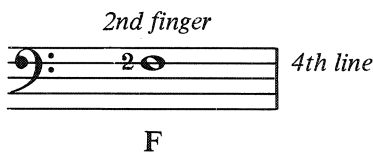
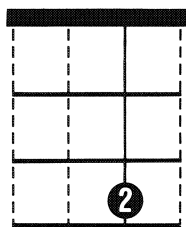
Before playing exercises 1–3, it will be helpful to review and practice the **FINGERSTYLE** or **PICKSTYLE** right-hand techniques presented on pages 4 and 5. Fingerstyle players should use *rest strokes*. Alternate the index (*i*) and middle (*m*) fingers. Pickstyle players should use a *down-stroke* (▣) on each note. When playing the following exercises, count out loud and keep a steady beat.

1.

2.

3.

## F 3rd fret, 2nd string



Place the 2nd finger of the left hand on the 3rd fret, 2nd string, immediately behind the fret wire. In music notation, the F is located on the 4th line of the staff.

4.

