

Alfred's Basic Piano Library

Merry Christmas!

Ensemble Book • Level 1A

SIX 4-PART ENSEMBLES FOR 4 KEYBOARDS

Willard A. Palmer • Morton Manus • Amanda Vick Lethco

Ensembles arranged by

Gayle Kowalchyk • E. L. Lancaster

Title	Student Parts	Teacher's Score
Away in a Manger	22–25.....	46
Good King Wenceslas.....	2–5.....	42
Joy to the World	34–41.....	48
O Come, All Ye Faithful.....	26–33.....	47
Up on the Housetop	14–21.....	44
We Three Kings of Orient Are	6–13.....	43

MERRY CHRISTMAS ENSEMBLE BOOK, Level 1A of Alfred's Basic Piano Library contains six favorite Christmas carols arranged for four-part ensembles. Part 1 of each ensemble is the solo version of the carol from MERRY CHRISTMAS, Level 1A. Parts 2, 3 and 4 were written using the same concepts at a similar level of difficulty. Students will enjoy the rich sounds created by combining the four parts on different keyboards or recording each part on a sequencer.

Each part is notated within the student's reading range on a separate page to facilitate ease in reading. Combined scores for the teacher are located on pages 42–48.

For those students using electronic instruments, suggested electronic sounds are given for each part. These sounds were chosen from a sound module that utilizes the General MIDI format.

The ensembles provide excellent motivational material for group lessons and recitals. Merry Christmas!

A 3.5" floppy diskette (Alfred #5716) with complete standard MIDI files is available to accompany this book. The diskette will play on most General MIDI instruments equipped with a MS/DOS compatible disk drive able to read standard MIDI files, as well as most computer-based sequencing programs. Each individual ensemble part is recorded on a separate MIDI channel using the suggested General MIDI sounds. A fifth MIDI channel contains a percussion part to accompany the ensemble. The disk is useful for both practice and performance.

Copyright © MCMXCIV by Alfred Publishing Co., Inc.
Printed in U.S.A. All rights reserved.

Illustrations by David Silverman

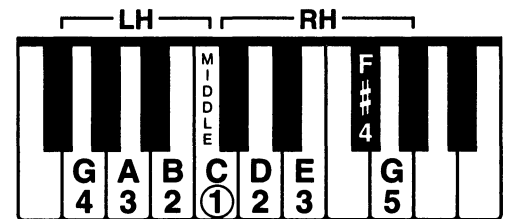
Music Engraving by Greg Plumblee

Part 1

Suggested Sound
Trombone GM 058



MIDDLE C POSITION (WITH F#)



Joy to the World

Joyfully

George F. Handel

5 2

f Joy to the world! The Lord is come; Let

1

5

3 4 5 2

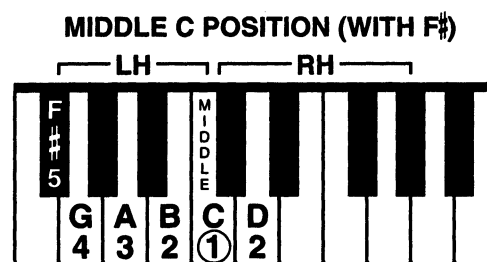
earth re - ceive her King! Let ev - 'ry —

1 3 2 4

TEACHER: See page 48.



Joy to the World



Joyfully

The musical score for 'The Rose Tree' is presented in a single system. The treble clef staff contains the melody, starting on a middle C (C4) and moving stepwise up to a G4 (the eighth note in the first measure). The bass clef staff provides a harmonic accompaniment, starting on a G3 (the first note in the first measure) and moving stepwise up to a D4 (the eighth note in the first measure). The key signature is one flat (B-flat), and the time signature is 4/4. The melody is marked with a forte (*f*) dynamic. The accompaniment is marked with a piano (*p*) dynamic. The score is divided into four measures, each containing a half note and a quarter note. The melody and accompaniment are written in a simple, clear style, suitable for a children's songbook.

5

1

2

2

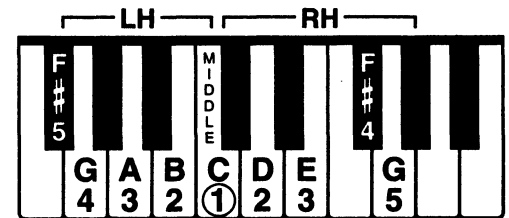
Part 3

Suggested Sound
Trumpet GM 057



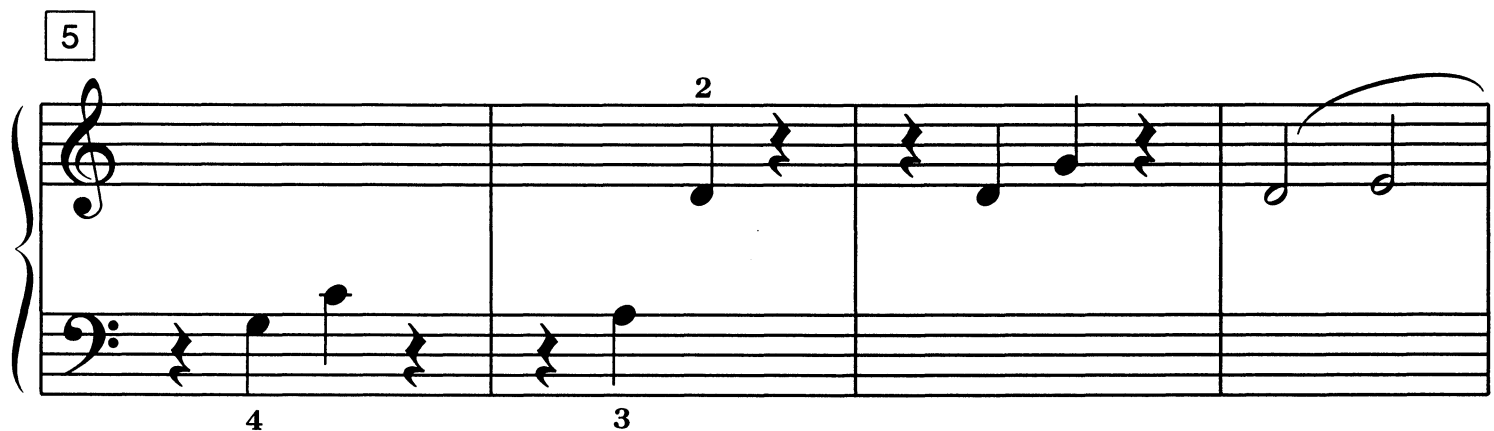
Joy to the World

MIDDLE C POSITION (WITH F#)



Joyfully

Both hands one octave higher than written throughout



TEACHER: See page 48.

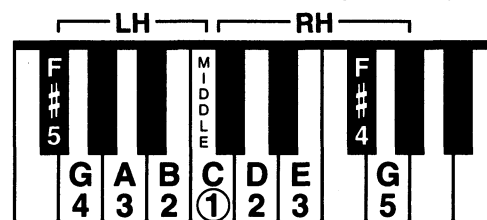
Part 4

Suggested Sound
Tuba GM 059



Joy to the World

MIDDLE C POSITION (WITH F#)



Joyfully

Both hands one octave lower than written throughout 2